

GIVING FOR A FAIRER AUSTRALIA



ANNUAL REVIEW 2015/16

WHY ACF?

At Australian Communities Foundation (ACF), our vision is to inspire and enable great philanthropy – the kind of philanthropy that ignites positive social change and makes our communities healthier and more resilient. We're unapologetic believers in the power of

collective effort, which is why our community of donors sits at the heart of everything we do.

Our mission is to make philanthropy accessible and easy by providing the tools, support and expertise our donors need to achieve their unique philanthropic goals.

HOW WE WORK

In a word, it's connection. By helping our donors connect with the causes they care about, we harness the collective potential of the ACF community to foster collaboration and bring greater visibility to nationally significant issues.

We've chosen to focus our impact on four key areas: social, environmental, economic and cultural justice.



"At ACF, our donors aren't on their own – they're part of a community with other like-minded Australians who want to support social change."

Maree Sidey, CEO, Australian Communities Foundation

CONTENTS

4	Chair's Message
5	Chief Executive's Message
6	What is a Community Foundation?
8	Snapshot of Our Donors
10	Welcome to Our New Donors
12	Impact in 2015/16
16	Our Theory of Philanthropy
18	Social Justice – Spotlight on Democracy
20	Cultural Justice – Spotlight on Indigenous Empowerment
22	Environmental Justice – Spotlight on Our Environment
	Donor Circle
24	Economic Justice – Spotlight on Gambling Reform
26	What Made Us Proud
30	Collective Giving
32	ACF Events
34	Leaving a Legacy
35	In Memoriam
36	Financial Summary
42	Our Team
43	ACF Consulting Service
44	Board of Directors
45	Farewell
46	Committee Members
47	Partnering with Others

CHAIR'S MESSAGE

There's been great energy at the Australian Communities Foundation over the past 12 months. We are embracing a future with a national focus on social change.

Some of the most significant activities undertaken this year include the design of ACF's Impact Fund and the critical investment in a new database, both of which will influence the effectiveness of our work.

In response to strong donor interest we have completed the transition of our investment portfolio to an Environmental, Social and Governance (ESG) portfolio which represents an important change in the way ACF's corpus is invested.

During the course of the past 12 months, the value of both our corpus and our granting continued to grow, and it has been pleasing to see how this sustained growth can contribute to positive social change.

At Board level, we farewelled long-standing

Board member, Casey Tan, who contributed nine years of dedicated service to ACF. On behalf of the Board, I extend my thanks to Casey for all his work and support. During the year our Chair Sarah Hosking took up a new role in Sydney and, while not continuing as Chair, she remains on the Board.

At the organisational level, I'd like to acknowledge Andrea Heffernan's valuable contribution over many years as well as thanking all ACF staff and our donors for their continued engagement.

Since becoming Chair in February, I've been struck by the enthusiasm and growth within the organisation and I believe there are exciting prospects for the year ahead.



David Murray

CHIEF EXECUTIVE'S MESSAGE

This was a year of tremendous momentum for Australian Communities Foundation. We've spent a lot of time sharpening our focus to get to the heart of who we are and what we do.

The process of revealing that essence wasn't overly difficult – accessible social change philanthropy has been part of ACF's DNA since its inception almost 20 years ago.

What's different is that we've sharpened our focus to articulate four impact areas: **social, environmental, economic and cultural justice.**

We believe that our strong values base, wholly aligned with the preferences of our forward-thinking donor community, will take our impact to new levels.

ACF is committed to embracing new approaches such as collective giving that makes philanthropy more accessible; connecting our donors with the change makers and thought leaders who are actively making the world a better place; and making the process of giving as easy as possible.

To that end, we've made a significant investment at the operational level to improve ACF's online accessibility for our donors. With our new, custom built database, donors will be able to log on and see live balances, donations and grant history. It's an online environment that will deliver a simpler, coherent user experience for our donors.

At ACF, everything we do is designed to support our donors and inspire their giving. Everyone's philanthropy is supported here – no matter what stage of the philanthropy journey you happen to be at.

I believe that together, we can go so much further, and I can't wait to see the impact of our invigorated commitment to social change, including the launch of our Impact Fund in late 2016. It's going to be a great year.

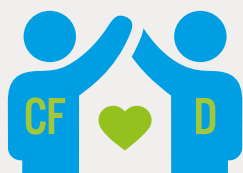


Maree Sidey

WHAT IS A COMMUNITY FOUNDATION?

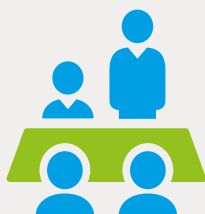
Community foundations are not-for-profit organisations that help build and strengthen communities through charitable giving.

1.



A community foundation works with donors – including **individuals, families and companies** – to build **tailored grant making strategies** that achieve impact in the cause area.

People from all walks of life come together as donors to **make a difference**, talk about their giving in a **supportive space** and learn from each other.



2.

3.



Whereas many community foundations focus on a single geographic area, Australian Communities Foundation is unique in that we help **donors from across Australia** achieve their philanthropic goals with **local, national and international causes**.

Our donors can grant income or capital and all **funds are invested together** – meaning individual funds benefit from a large investment pool. ACF donors can choose to **fund individually** or **amplify** their impact by funding collectively.



4.

5.



Either way, **we take care** of all the **paperwork – compliance, due diligence, administration** – leaving you to get on with the things you're passionate about.

At ACF, we believe philanthropy is for everybody and we aim to make giving as **accessible to as many Australians** as possible. You don't need to be a millionaire to get started – most of our **donors are regular people** with a little more than they need to live on, who want to do what they can to **create a better Australia**.



6.

7.



Establishing a tax deductible fund at ACF can be done in 24 hours. For more information visit: www.communityfoundation.org.au

SNAPSHOT OF OUR DONORS

The ACF community is made up of individuals, families, friends, community groups, corporates, collective giving groups and not-for-profits. Our donors are diverse, dynamic and passionate about creating a better Australia through their giving.



"Primarily I'm moved by the situations of people who have been displaced from various perspectives: socially, economically, politically. When I was younger, I would look at such people, feeling that it could have easily been me if I hadn't been adopted into my family. This includes our Indigenous communities, education, youth at risk and refugees."

SUE BEETON, BEETON FAMILY FUND



"Abercromby's has donated to a number of community charities over the years. We decided that setting up the Abercromby's Charitable Fund with ACF was a perfect way to support more than one community charity whilst ensuring the correct procedures and protocols were followed. Each month a percentage of our income plus the money from the fundraising activities we undertake is donated to the sub-fund."

ANDREW HARLOCK, ABERCROMBY'S CHARITABLE FUND



"We were both raised in families where social justice was high on the agenda but funds were limited. Now that we are fortunate enough to have discretionary funds, we decided to set up the Espero Fund. We are passionate about addressing the growing inequality in Australia, as well as globally, and we direct our funds to programs that we think will contribute to a more equitable and just society."

PETER VAN DUYN & VERONICA COLLINS, ESPERO FUND



"I first took an interest in philanthropy in 1999 after the sale of a business but setting up my own foundation wasn't realistic for two reasons: the legal and administrative requirements which I had no wish to take on, and my lack of grant making experience. Working with ACF meant I could make a significant donation immediately (helpful for tax planning) and still be involved in how my funds would be used in future years."

JIM HART, HART LINE FUND



"I have always been very aware of the inequalities in society and I've always given to a variety of causes. The appeal of setting up a sub-fund was that it can be very precise in the way donations are made and, with the help of ACF staff, it's possible to experience first-hand the work you're funding. I really enjoy the Indigenous giving circle which is informative and a great group of people."

PRUE BROWN, SUNNING HILL FUND

WELCOME TO OUR NEW DONORS

We welcomed the following new Gumnut accounts and Sub-Funds to our growing community in 2015/16:

SUB-FUNDS (MINIMUM STARTING BALANCE \$20,000)

Corporate

- » Abercromby's Charitable Fund
- » Goulburn Valley Medical Workforce

Family

- » Durrabool Fund
- » Raettvisa Fund
- » Vandm

Not-for-profit

- » AMCS Charitable Fund
- » AMCS Charitable Extension Fund
- » Westgate Health Charitable Fund

GUMNUT ACCOUNT (CONTRIBUTE \$2,000 PER ANNUM)

- » 22

You can start big or small and we offer a number of options for individuals, families, not-for-profit organisations or corporates.

Talk to us about what would work best for you. Call **03 9412 0412** or email admin@communityfoundation.org.au



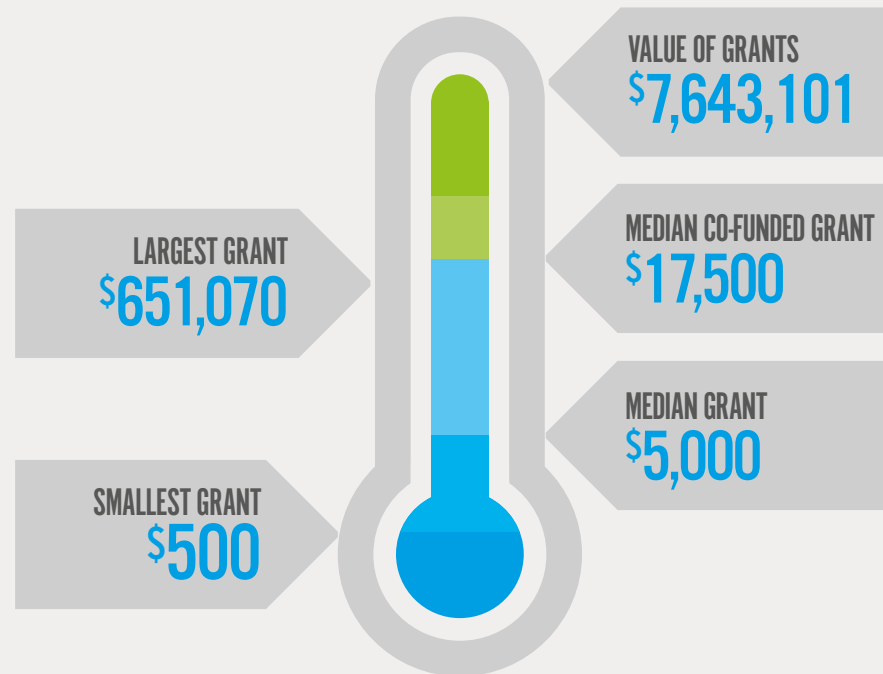
I really like being a part of ACF as I have become part of a community of people, many of whom have similar values.

Lin Padgham, Raettvisa Fund



IMPACT IN 2015/16

AT A GLANCE...



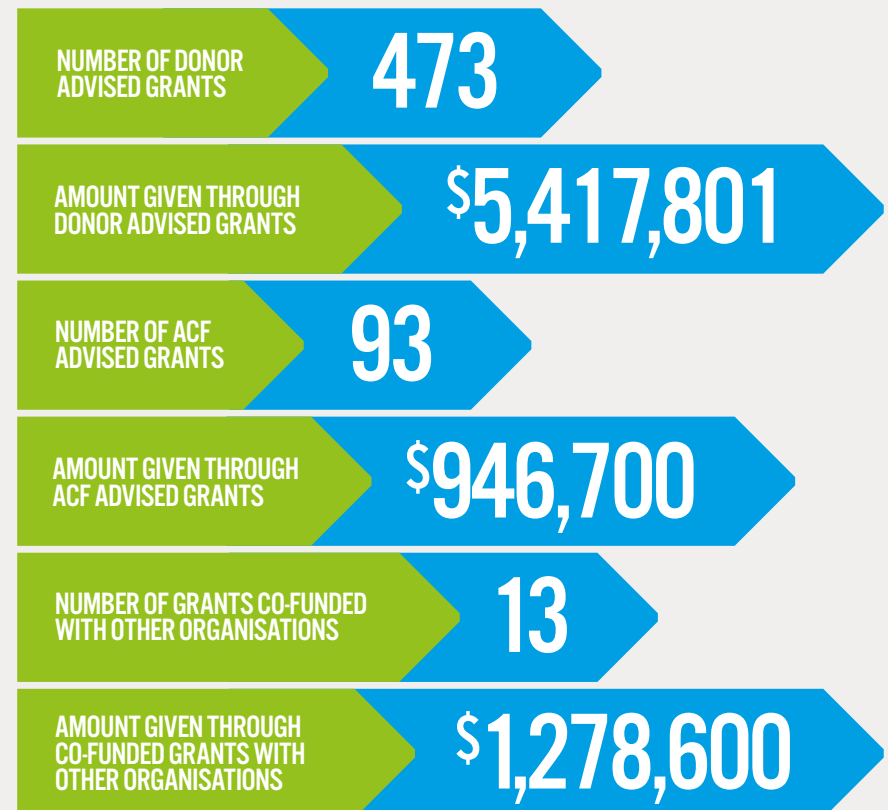
WORKING COLLECTIVELY

The ACF Team supports collaborative and strategic grant making by helping donors connect with causes and facilitating collective action with ACF donors and other philanthropic organisations.

Collaborative efforts increased in 2015/16 in areas such as international development, environmental sustainability,

asylum seeker advocacy and pokies reform. **Collaborative grants were 3.5 times the average ACF sub-fund grant, highlighting the greater impact our donors can have when working together.**

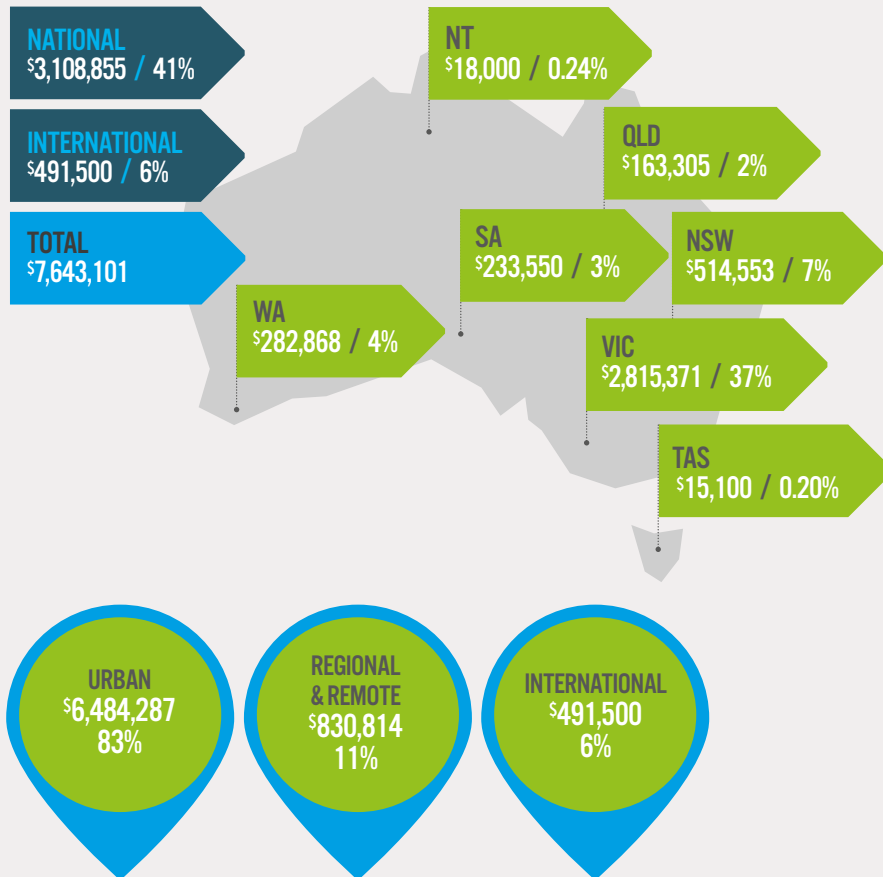
ACF also partnered with other philanthropic funders on 13 separate grants, leveraging additional funds for important causes across the country.



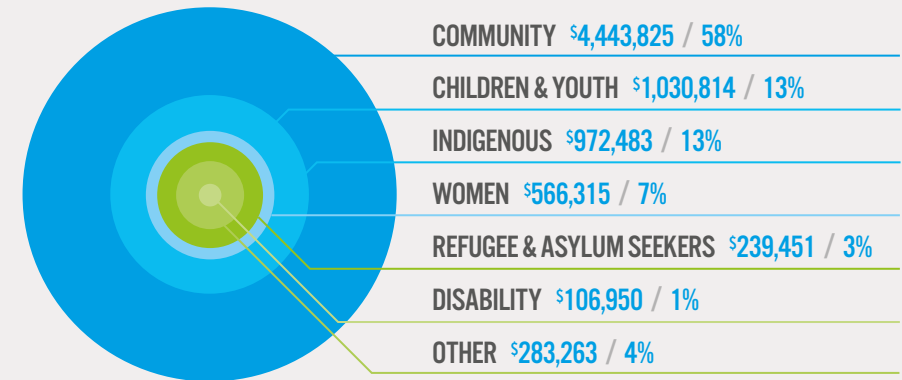
SUPPORTING AUSTRALIAN COMMUNITIES

2015/16 was the first year that granting to national projects has been higher than granting to Victorian-based projects. This is a marked shift for ACF and reflects the growing interest of our donor community in issues affecting the nation as a whole.

Our granting supported urban and regional communities across Australia. ACF's partnership with the Foundation for Rural & Regional Renewal has facilitated more grant making in regional and rural areas and has been very helpful for our donors who like to keep their philanthropy local.



TARGET GROUP



SUPPORTING THE CAUSES AUSTRALIANS CARE ABOUT



EDUCATION, TRAINING & EMPLOYMENT
\$2,559,610 / 33%



ARTS & CULTURE
\$1,584,446 / 21%



COMMUNITY SERVICES & SUPPORT
\$939,305 / 12%



HEALTH & MEDICAL RESEARCH
\$869,565 / 11%



ENVIRONMENT & CONSERVATION
\$731,500 / 10%



SOCIAL JUSTICE, HUMAN RIGHTS & INEQUALITY
\$503,675 / 7%



OVERSEAS AID & DEVELOPMENT
\$455,000 / 6%

TOTAL
\$7,643,101

OUR THEORY OF PHILANTHROPY

At ACF, we're committed to collaborating for positive social change. We believe that together, we can create the Australia we want to see. One that's fairer for everybody.

The two questions we constantly ask ourselves are: **'What do Australians care about?'** and **'How can we help bring about meaningful change?'**

As a community foundation, our priorities reflect and respect those of the communities we work with: our donors, our nonprofit partners and the communities they serve.

Everything we do – from our new Impact Fund which targets emerging opportunities to impact systemic issues, through to our regular grant making – is designed to build connections and progress a social change agenda. We support the pursuit of social, environmental, economic and cultural justice by making philanthropy accessible to more Australians.

“Philanthropy’s a very personal journey, but it doesn’t have to be a solo one. Connecting with a likeminded community can carry you further – and good company always makes the ride a whole lot more rewarding.”

Helen Imber, Silver Gold Fund



SPOTLIGHT ON...

DEMOCRACY

SOCIAL & ECONOMIC JUSTICE
GRANTS: 65

\$503,675

The primary objective of David Morawetz's Social Justice Fund is "to make life a little less unfair."

"The world's becoming more unequal and I've been quite fortunate, so I think it's important to do something, no matter how small, to make life a bit less unfair for others," David says.

David's long-standing relationship with ACF has generated opportunities for new and additional support for causes that matter to him.

"ACF regularly sends around lists of projects looking for support and some of those have actually become quite significant for me."

"Similarly, when I've been trying to raise money for different projects, ACF has put the projects in front of other donors and we've managed to secure additional dollars."

"I love being part of ACF because they take care of all the work I'm not interested in – all the nitty gritty administrative work like checking DGR and TCC status and making sure that the 6-monthly reports come in."

"I can spend my time on the things I'm really interested in, like finding the projects and going out to see the organisations for myself and talking to people to hear what's really going on."

David Morawetz

In recent years, the Social Justice Fund has increased its support of progressive think tanks such as The Australia Institute, Australia 21 and Per Capita.

"These think tanks are trying to improve our democracy by providing genuine information," David explains. "They're providing research to help people make good decisions."

"I've always believed that ideas are really important. It can be very hard to get funding for ideas, but I think it's critical to support research that matters."

SPOTLIGHT ON... INDIGENOUS EMPOWERMENT

CULTURAL JUSTICE
GRANTS: 66

\$972,483

The Towards a Just Society Fund (TJSF), established by the late Sid Spindler, is a nine-member ACF sub-fund that focuses its support on Indigenous education and Indigenous-led organisations, in order to empower self-determination and reduce injustice.

TJSF celebrated its 10th anniversary last year and current Chair of the Fund, John Burke, says there have been plenty of lessons learned along the way.

"We've moved away from specifying projects and being prescriptive about outcomes and we're now trying to consider how we get greater input into identifying projects and making funding decisions from the Aboriginal communities themselves."

"To my mind," John continues, "the most valuable lesson has been not thinking that we know better than the organisations that are putting forward the projects."

"The journey has really been one of recognising the value of self-determination."

Antoinette Braybrook, CEO, FVPLS
Victoria with ACF donor Sue Beecher. >

"This grant has helped us increase organisational capacity and take the pressure off frontline legal staff and policy workers, allowing them to focus on service delivery and policy reform."

Justine Russell

The Aboriginal Family Violence Prevention and Legal Service (FVPLS) Victoria is an Aboriginal Community Controlled Organisation which has benefited from TJSF's enlightened approach to engagement.

The support from TJSF has helped FVPLS employ a part-time Grant Seeker/Fundraiser which allows fellow staff to dedicate more time and resources to their core work of assisting Aboriginal women and children impacted by family violence.

"Continuity of funding has always been an issue for FVPLS Victoria," FVPLS Grant Seeker Justine Russell says. "The time it takes to research, identify and write funding applications to continually try and fill resource gaps places a significant strain on the organisation's capacity."



SPOTLIGHT ON OUR... ENVIRONMENT DONOR CIRCLE

ENVIRONMENTAL JUSTICE
GRANTS: 81

\$731,500

With around 30 active funds in the environment and climate change space, ACF's environmental funders are a well-informed and engaged group. When it comes to amplifying impact, our Environment Donor Circle is a great example of what we can achieve together.

ACF researches and identifies high-performing environmental organisations that are invited to present to the donor circle and share their specific needs and approaches.

Ann and Bruce McGregor are active members of the Environment Donor Circle and both say there are many benefits of being involved in a giving group.

“You meet other people who share your interests, you hear different ideas and perspectives. We think that’s valuable for issues like the environment where it can be really hard to know where to start.”

Ann & Bruce McGregor

Julie Hirsch from Australian Youth Climate Coalition (AYCC), which received core funding support from ACF donors, says its training program will help 1,000 young people become leaders on climate change and sustainability.

“While young people are passionate about this issue, financial and logistical barriers keep them from gaining the skills they need to take action,” Julie explains.

“Philanthropic support breaks down these barriers, and ensures young people can protect their future from global warming, no matter what their socio-economic or geographical background.”

⌆ [AYCC Flash Mob](#)

SPOTLIGHT ON...

GAMBLING REFORM

SOCIAL & ECONOMIC JUSTICE
GRANTS: 65

\$503,675

Addressing inequality in its many guises is a priority for ACF, and some of our donors have taken bold steps to pursue a change agenda.

A recent case in point is our collective activity around gambling reform, and particularly for the making and screening of the documentary, *Ka-Ching!*, which exposes the

truth about the pokies being intentionally designed for addiction.

Gambling is a significant cause of inequality and hardship in Australia, and even though we're home to just 0.3 per cent of the world's population, 20 per cent of the world's poker machines are found here.

“What we’re trying to achieve with our giving is systemic change.”

Sue & Eric Beecher

The Alliance for Gambling reform was the recipient of two ACF grants this year which will be used to raise awareness of the damage done by poker machines, build support for tougher laws and bring a landmark case against Crown Casino and Aristocrat poker machines.

Sue and Eric Beecher from the Beecher Family Charitable Fund, helped fund the filming of *Ka-Ching!* and supported a screening for fellow ACF donors.

“We want to make sure we’re supporting organisations behind things like *Ka-Ching!* that have the potential follow on for political change. Helping get the film made is great but to make real change, it needs to have political impact.”

⌘ Alliance for Gambling Reform 'The Pokies Play You' campaign.

WHAT MADE US PROUD... OUR AWARD WINNING GIVING CIRCLE



Philanthropy Australia 2016 Best
Small Grant of the Year

Australian Communities Foundation
Refugee and Asylum Seeker Giving Circle

OVER
THE
LAST

»

10
YEARS

»

ACF
HAS
MADE

»

132
GRANTS

»

TOTALLING
\$979,303

»

TO ORGANISATIONS
WORKING WITH
ASYLUM SEEKERS.

Reflecting the growing interests of our donors in this area, ACF launched the Refugee and Asylum Seeker Donors Circle in early 2014, and we were thrilled to receive the 2016 Best Small Grant of the Year at the Philanthropy Australia Awards in April.

The Refugee and Asylum Seeker Donors Circle helps our donors achieve significant impact with modest amounts of money,

including a small but powerful grant of \$30,000 annually over three years towards the establishment of the Refugee Rights Unit at the Human Rights Law Centre.

Four sub-funds in the Circle contributed to the grant: Espero Fund, Assia Altman Fund, The Fairness Fund and Beecher Family Charitable Fund.

“The circle’s support of the Refugee Rights Unit is helping the Human Rights Law Centre expose the inhumanity of Australia’s offshore processing policies and change public attitudes towards refugees and asylum seekers.”

Sarah Thompson,
Philanthropy Manager

» Shen Narayanasamy from GetUp! speaking at the Refugee & Asylum Seeker Donor Circle.

WHAT MADE US PROUD... OUR ESG JOURNEY

At ACF, we walk the talk. In keeping with our values and those of our donor community, we've undertaken important work to transition our portfolio to fund managers that take environmental, social and governance (ESG) issues into account in their investment decision-making. It's called ESG investing.

The managers that have been selected are signatories to the United Nations Principles for Responsible Investment and, where possible, have been certified by the Responsible Investment Association Australasia.

Evaluating how ESG issues impact a company's value, its stakeholders, business model

and reputation, its risk and return is now considered best practice amongst institutional investors like ACF.

ACF's commitment to ESG investing gives our donors confidence that their donations and sub-fund capital are extending their impact by being invested to do good and avoid harm to the world.

Our ESG investment approach seeks the best outcomes for the corpus, people and the planet and we're proud to be leading the way for foundations in Australia.

EXAMPLES OF THE ISSUES CONSIDERED INCLUDE:



Environment

- » Biodiversity
- » Climate change & carbon emissions
- » Energy efficiency
- » Pollution & waste management



Social

- » Gender & diversity
- » Human and labour rights
- » Supply chain management
- » Workplace health and safety



Governance

- » Board & organisation structure
- » Risk management
- » Staff remuneration
- » Transparency

“We feel it is very important for the Foundation's investments to align with the values and strategies behind our giving. The transition to an ESG portfolio means that we no longer feel that the investments may be undermining the outcomes we are seeking through our donations.”

Linda Parlane & John Stone, Running Waters Fund

COLLECTIVE GIVING

At ACF, we've long been fans of collective giving which brings together two of our key priorities: making philanthropy accessible and building a community of engaged givers.



ACF is proud to be the community foundation of choice for some of the country's biggest collective giving groups including Impact100 WA, Impact100 SA and the newly launched Impact100 Sydney North.

James Boyd, founding committee member of Impact100 WA, is responsible for bringing the Impact100 model to Australia and is considered one of the leading authorities on collective giving.

"For us it made sense to align with a community foundation with a national mandate," James says.

The Impact100 model sees 100 or more people contribute \$1000 each to award a high impact grant, chosen by donors. In 2015, Impact100 WA awarded two grants of \$100,000 each.

"The Impact100 model is ideal for any large regional town, city or region within a city," he explains. "It is a growing movement and I expect we could see 20-30 groups around Australia."

"It is a perfect vehicle to build knowledge and awareness of community needs and influence social change."

"ACF has embraced the idea warmly, working with us to try something new and develop a service model for Impact100 sub-funds."

James Boyd

To establish a collective giving fund at ACF contact us on 03 9412 0412 or admin@communityfoundation.org.au

« Launch of Impact 100 Sydney North.

ACF EVENTS

Each year, we host a range of events for our community of donors to connect with one another and support informed grantmaking. In 2015/16 we discussed a variety of topics as diverse as succession planning, fundraising and ethical investment. We also heard from a number of change makers and thought leaders within the not-for-profit sector.

2015 JUL	Indigenous Giving Circle Family Violence	2016 FEB	Indigenous Giving Circle Early Years
	Refugee & Asylum Seeker Donor Circle Giving Strategies		Environment Funders Workshop
2015 AUG	Melbourne Writers Festival Debate Is funding the arts doing good?	2016 MAR	Philanthropy 101 Fundraising & Succession Planning
			Philanthropy Leading Climate Change
2015 SEP	Indigenous Giving Circle Education Pathways	2016 APR	Ethical Investment Update ESG
	Social Justice Film Screening Inequity & Gambling	2016 MAY	Indigenous Giving Circle Empowering Communities
2015 OCT	The Funding Network Event Human Rights & Social Justice	2016 JUN	End of Financial Year Celebration
	Refugee & Asylum Seeker Donor Circle Legal Focus		
2015 NOV	Sports & Philanthropy USA Context		
	End of Year Celebration International Development		



Asylum Seeker & Refugee Donor Circle

LEAVING A LEGACY

Choosing to leave a bequest to ACF in your will is a powerful way of ensuring your chosen causes will continue to benefit from your support beyond your own lifetime.

Dennis Altman established the Assia Altman sub-fund in 2010.

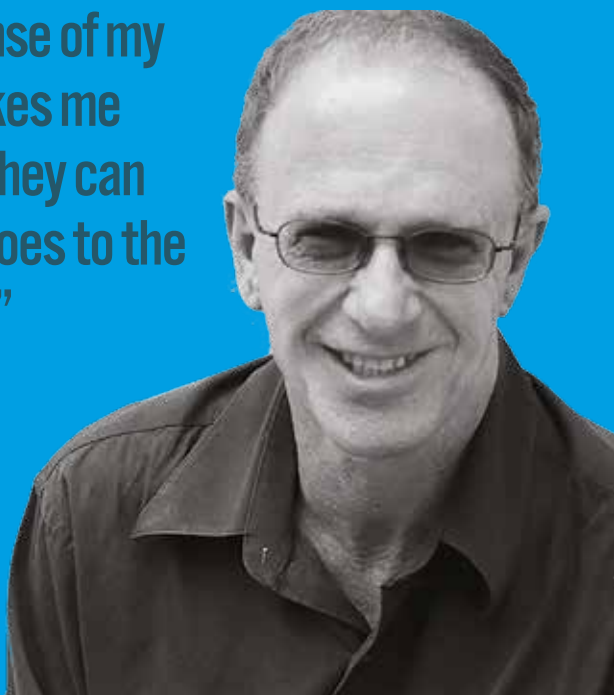
He says his recent decision to leave a bequest to ACF was an easy decision to make.

"The reason I chose to leave a bequest to ACF rather than one specific charity is because I believe if you want to leave

money for the causes you care about, you have to be very careful in terms of the organisations you name. The charity that might seem terrific today might not even be around in the future, or perhaps the aims of the organisation will have changed dramatically."

"ACF has a clear sense of my priorities which makes me feel confident that they can ensure the money goes to the right organisations."

Dennis Altman



IN MEMORIAM



RUTH DIXON

Ruth Dixon established the Dumbarton Fund with ACF in March 2010 and was an active member of our donor community. She was a passionate supporter of micro credit and water projects in developing countries, homelessness and affordable housing programs in Australia and girls' education locally and overseas.

One of Ruth's favourite projects was the Centre for Multicultural Youth's Homework Club Initiative which provides educational opportunities for disadvantaged young people in underserved areas of Victoria.

After Ruth died in February 2016, her nephew, as executor of her estate, advised ACF that Ruth had left a substantial bequest to 'her beloved ACF Fund' so that her giving legacy can continue.



JOAN NELSON (MCLENNAN)

Joan Nelson established the Joan and David Harper McLennan sub-fund in 2008, with a focus on supporting social justice.

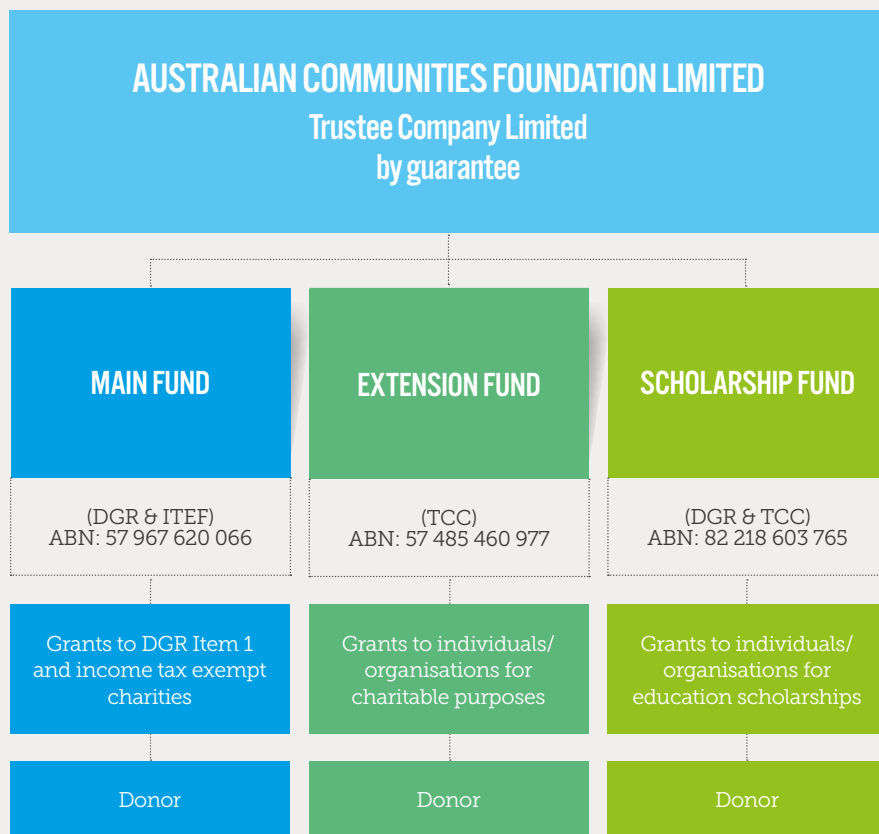
St Mary's House of Welcome in Fitzroy received significant support from Joan which enabled St Mary's clients to access valuable pre-

employment classes in food preparation and serving.

Joan died in February 2014, and ACF was the major beneficiary of her will. In keeping with Joan's last wishes to continue her legacy, funds from the Joan and David Harper McLennan sub-fund will support social justice projects.

FINANCIAL SUMMARY

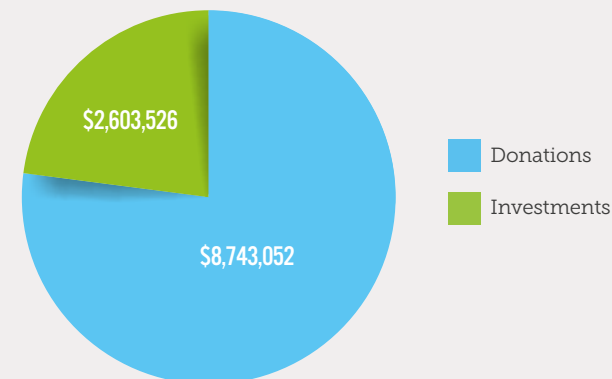
ACF operates three charitable trust funds providing flexibility and options to suit individual tax requirements and areas of interest.



DGR: Deductible Gift Recipient status
ITEF: Income Tax Exempt Fund
TCC: Tax Concession Charity

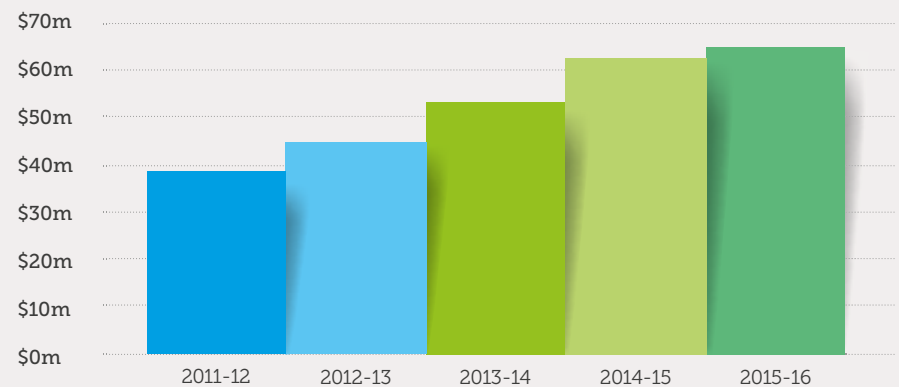
REVENUE

In 2015/16, ACF achieved \$11.3M in revenue. Total donations during the year amounted to \$8.7M, reflecting 75% of total revenue. The balance of \$2.6M came from investment portfolio returns.



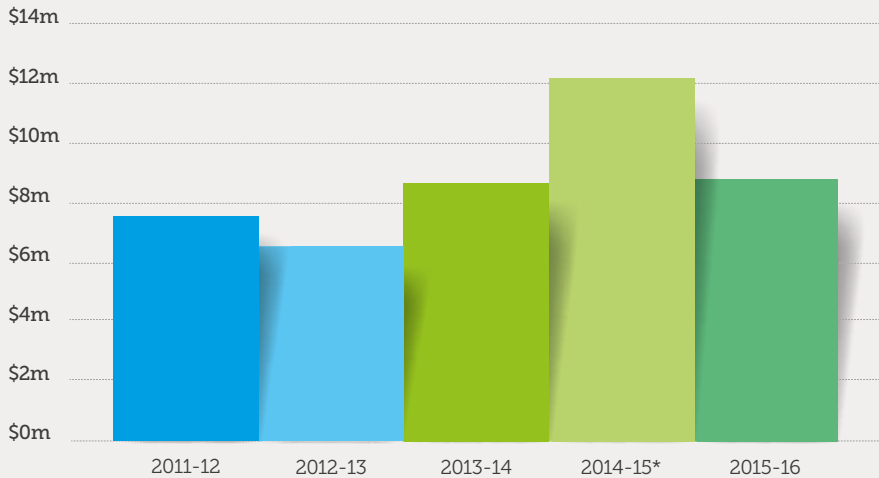
CONTINUED GROWTH

At June 2016, the ACF Corpus was \$65M, an increase of \$2.5M from the prior year. This continues the steady growth in corpus.



DONATIONS

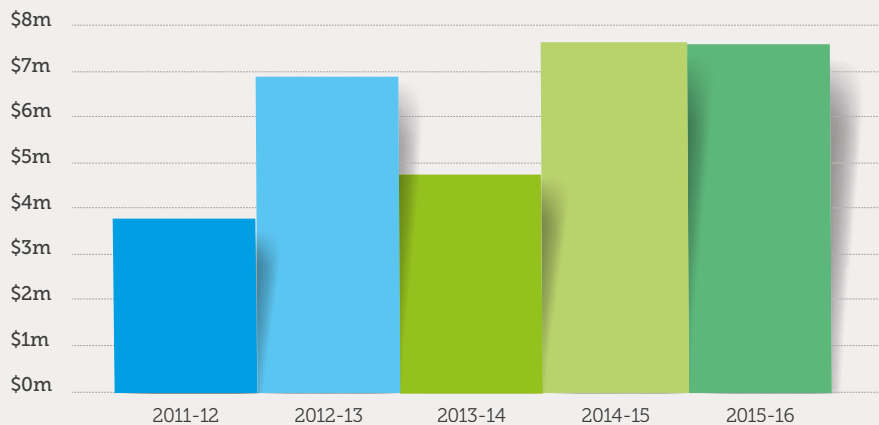
Donations remained steady with a total of \$8.7M received in 2015/16.



*Substantial bequest received in 2014/15.

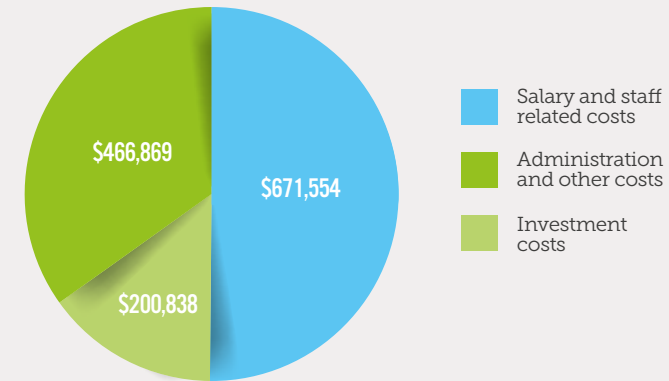
GRANTS

Grants for the year were \$7.6M, 11.8% of the total corpus.



OPERATIONS

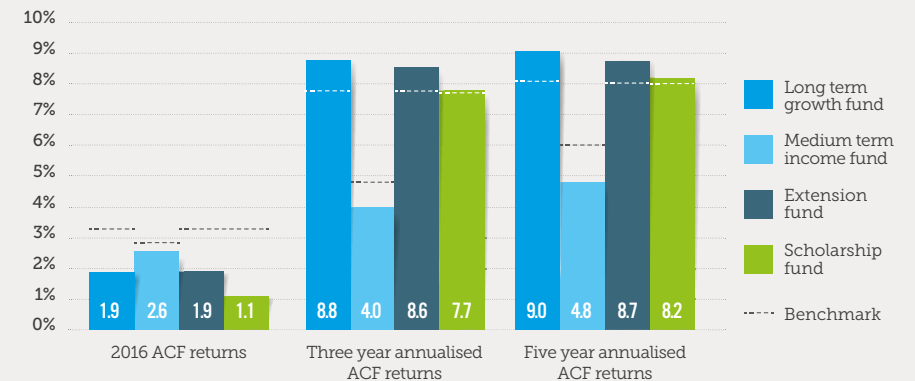
Total operating costs were \$1.3M, a slight increase on the previous year as this year included the roll out of the database upgrade.



INVESTMENT PERFORMANCE

We encountered a challenging investment environment in the 2015/16 financial year. This comes after three above average return years from 2012 to 2015, with both three year and five year averages showing strong returns and relative out-performance against the underlying benchmarks.

Investment returns



SUMMARY

Revenue	\$	Outgoings	\$
Donations	8,743,052	Granting	7,643,101
Investment	2,603,526	Operating costs	1,339,261
Total	11,346,578	Total	8,982,362

Breakdown of operating costs	\$
Salary & staff related costs	671,554
Investment costs	200,838
Administration & other costs	466,869
Total	1,339,261

Accumulated funds	2016 net assets \$	2015 net assets \$
ACF Main Fund	54,787,615	54,430,236
Extension Fund	9,733,696	7,769,912
Scholarship Fund	526,219	387,191
Total	65,047,530	62,587,339

Complete financials can be viewed at communityfoundation.org.au

OUR TEAM

Maree Sidey > **Chief Executive Officer**

FINANCE & ADMINISTRATION

Mary Latham > **Acting Chief Financial Officer**

Christine Selle > **EA & Office Manager**

Eshan Sandanayake > **Financial Controller**

Alex Carroll > **Accountant**

DEVELOPMENT & DONOR RELATIONS

Sarah Trainor > **Manager Development & Donor Relations**

Melina Rookes > **Marketing & Communications Officer**

Raz Babic > **Donor Services Support Officer**

Helen Imber > **Volunteer Program Coordinator**

PHILANTHROPY & IMPACT

Sarah Thompson > **Philanthropy Manager**

Fernke Bosman > **Grants & Impact Coordinator**

Sophie Waincymer > **Grants Administrator**

CONSULTANTS

Trudy Wyse

Marion Webster

ACF CONSULTING SERVICE

From insight through to execution, our Philanthropy Consulting Service can help turn ideas about giving into tangible outcomes.

HOW WE CAN HELP?

ACF has extensive knowledge and practical experience in grantmaking, effective philanthropy and the design and development of philanthropic structures and operations.

We can review and evaluate philanthropic programs and operations and undertake feasibility studies for prospective

philanthropic initiatives, including the establishment and development of new trusts and foundations.

We are skilled grantmakers and we research, analyse and recommend funding for many charitable projects locally, nationally and internationally.

OUR CORE SERVICES

- 1.** Establishing and maintaining philanthropic trusts.
- 2.** Technical expertise and governance advice.
- 3.** Bespoke grantmaking services.
- 4.** Strategic growth initiatives.

Call **03 9412 0412** to speak to one of our consultants or email **consulting@communityfoundation.org.au**

BOARD OF DIRECTORS



David Murray
(Chair from February 2016) BA DipCrim, MA, MAICD



Pamela McLure
BA, DipSoc, MA



Sue Dahn
BCom, MBA GradDip Applied Fin & Investment, FFinsia FAICD FASFA FSCPA



Steve Rothfield
BCom, MBA, CPA



Gayle Hardie
Dip MKTC; B.Sc; MA, AFAIM, MAICD



Catherine Smith
BSc (SpHons) MSF, FIPAA (Vic)



Sarah Hosking
(Chair until January 2016) PhD, FAICD



Samantha Smith
BBus (Mktg), MA, DBA



David Imber
BA, LLB



Casey Tan
BCom MMgt, FCA, FAIM, FAICD, FIPAAV, PHF



George Krithis
BBus CFP (FPA), CPA (FPS - ASCPA)



Emma Woolley
LLB (Hons)

FAREWELL



PETER HERO

This year, we were saddened by the passing of Peter Hero, an influential and inspirational leader and former ACF board member.

Peter led the Silicon Valley Community Foundation from 1988 to 2006 and has been described as 'the man who taught Silicon Valley,

the land of the cyber-stingy, to care about philanthropy.'

Peter later founded The Hero Group and continued to champion and challenge ideas about philanthropy through his involvement on the boards of corporate, community and family foundations.

He was a great support to Australian Communities Foundation, serving as a board member from 2007-12. Our founder, Marion Webster, remembers Peter with great warmth.

"He was a man of great experience, wisdom, generosity and fun, and was instrumental in challenging and helping us adopt new ways of working."

Marion Webster OAM

COMMITTEE MEMBERS

AUDIT & RISK COMMITTEE

Steve Rothfield (Chair)

Steve Bradby

Ryan Dummett

GOVERNANCE COMMITTEE

Gayle Hardie (Chair)

Sarah Hosking

David Murray

Steve Rothfield

Emma Woolley

GRANTS COMMITTEE

David Murray (Chair)

David Imber

Pamela McLure

Loretta Mannix-Fell

Cath Smith

Peter Van Duyen

FINANCE & INVESTMENT COMMITTEE

George Krithis (Chair)

Sue Dahn

Michael Gilmore

Tristan Lloyd

Steve Rothfield

Casey Tan

PROFESSIONAL ADVISERS COMMITTEE

Emma Woolley (Chair)

Peter Bell

Simon Briggs

Zoe Griffiths

Daniel Kelliher

Roy Leech

Sam Morris

Jonathan Scholes

Mark Stokes

PARTNERING WITH OTHERS

ACF is very reliant on our community of supporters, which is why we give our heartfelt thanks to our donors, partners and volunteers, our Board and Board Committees, which generously give their time and resources.

We'd also like to acknowledge the valuable support we've received this year from the following partners and friends:

Peter Bell, Bell Potter

Prue Brown, Donor

Helen Imber, Donor

Alice Macdougall, Herbert Smith Freehills

Linda Parlane, Donor

Rob McKie, Pitcher Partners

Michael and Marion Webster

Ballandry Fund

BB & A Miller Fund

Clare Murphy Fund

Henkell Family Fund

Williams Fund

acca



BELL POTTER



Hall & Wilcox
smarter law



JBWere





Fitzroy Town Hall
201 Napier St
Fitzroy VIC, 3065
03 9412 0412

admin@communityfoundation.org.au
www.communityfoundation.org.au

This has been printed on recycled paper with CO2 Savings of 566kgs.