

20 YEARS



ANNUAL REVIEW 2016/17

ACF acknowledges the Traditional Custodians of the land on which we work and live, and recognise their continuing connection to land, water and community. We pay our respect to Elders past, present and emerging.



YEARS STRENGTHENING COMMUNITIES

For 20 years, Australian Communities Foundation (ACF) has made philanthropy accessible to everyday Australians. As a coalition of givers intent on leveraging outcomes for real social change, ACF continues to challenge the status quo by practicing a style of philanthropy that is inclusive, grassroots active and values-driven.

Throughout this year's Annual Review you'll find many highlights and milestones from ACF's journey as well as stories from members of our growing donor community. We hope they inspire you to join us and help shape a collective future that's better for all Australians.



CONTENTS

6

Chair Message

7

CEO Message

8

What is a
Community
Foundation?

10

Pioneering
Community
Philanthropy

12

Philanthropy Starts
at Home

16

The Melbourne
Years

22

A Vision for a Better
Australia

26

Celebrating 20
Years

28

20 Years of Giving &
Growth

30

Year in Review

34

Impact Fund

36

ACF Events

38

Welcome to ACF

40

Financial Summary
2016/17

46

Our Team

48

Board of Directors
& Committee
Members

50

Thank You

CHAIR MESSAGE

Hearing the many stories and tributes that flowed from our 20th anniversary celebration this year, I was struck by just how far we'd come as a coalition of changemakers.



In 2016/17 we welcomed 25 new funds and distributed \$6.4 million in the form of 583 grants. Just as the number of donors and grants grow each year, ACF continues to grow and evolve.

Investment returns were strong and well above benchmark - the ACF Long Term Growth Fund returning 13.1% and the Medium Term Income Fund returning 6.6%.

Throughout its 20-year history, ACF's philanthropic practice has consistently prized engagement. Then, as now, our brand of philanthropy is active, forward-thinking and committed to grassroots change.

From the outset, our founders, Marion Webster OAM and Hayden Raysmith AM, were determined to build a vehicle that made

philanthropy more accessible for more people. Not only has that goal been realised, but these philanthropic contributions from everyday Australians have supported enduring change for communities across the country.

Thank you to our community of donors, the Board, committee members, and staff who work with us to achieve this mission. A welcome also to Michael Gilmore, a long-term Finance Committee member who joined the Board in 2016/17.

As I enter my ninth and final year on the ACF Board, I'm proud of all that we've achieved together. I believe that recent initiatives such as the Impact Fund, along with the ongoing work of ACF's donor community, will enable ACF to step confidently into the arena of national policy debates in order to combat systemic disadvantage and build a fairer Australia.

Here's to the next 20 years of growth and development.

David Murray

CEO MESSAGE

It's been a wonderful year of celebration. In honoring our history, we pay particular respect to our founders and new Patrons, Marion Webster OAM and Hayden Raysmith AM.



The exceptional gift our founders gave the sector by bringing the community foundation model to Australia changed the face of philanthropy in this country. The growth of the community foundation movement in Australia has brought thousands of people into philanthropy and delivered untold benefits to our communities.

In reflecting on our own 20-year journey, there have been plenty of lessons learned. Chief among them is to never underestimate the profound power of the collective: community foundations give voice to those who don't have a voice, empower the disempowered and, ultimately, give the gift of financial resources where it matters most. Community foundations are at the heart of democratic philanthropy and ACF is incredibly proud to be part of

this growing, global movement.

Growth demands evolution and while community foundations such as ACF remain deeply committed to place-based philanthropy, we are increasingly recognising that, as global citizens, our community is not just defined by the place we live in. We all belong to many different communities and ACF is committed to strengthening and supporting those connections to help create a better future for all Australians.

To that end, ACF will continue to support all forms of engaged and accessible philanthropy, so you can support the issues and causes important to you.

Our newest goal is one that will see us connect more deeply with our capacity to effect change by playing our part in funding, advocating and agitating for social change in some of the big issues facing our nation, through the ACF Impact Fund.

It's an exciting time to be a community foundation.

Maree Sidey

WHAT IS A COMMUNITY FOUNDATION?

Community foundations are not-for-profit organisations that help build and strengthen communities through charitable giving. The ACF community is made up of individuals, families, friends, community groups, corporates, collective giving groups and not-for-profits. Our donors are diverse, dynamic and passionate about social, environmental, economic and cultural justice.

1.



Our donors come from all walks of life – **individuals, families and companies.**

2.



Our team takes care of all administration – **compliance, due diligence, paperwork.**

3.



Our donors can grant income or capital and all funds are **invested together** and benefit from a **large investment pool**.

4.



We lead the way as seen in our transition to **ethical investing**, ensuring our investment strategy aligns with our values.

5.



Our **best practice** grantmaking services work with donors to develop **grantmaking strategies**.

6.



Our donors become part of a unique philanthropic community. We hold regular **donor events** and **workshops** to support effective grantmaking.

PIONEERING COMMUNITY PHILANTHROPY

ACF founders, Marion Webster OAM and Hayden Raysmith AM, pioneered the community foundation model in Australia. After establishing the Victorian Community Foundation (VCF) in 1993 with ANZ Trustees, Marion researched leading edge practice with a view to honing VCF's impact and effectiveness.

After securing grants from the US-based Charles Mott Foundation, VCF brought three community foundation experts from the US and UK to Melbourne to learn from their experience. Each of them insisted that independence was critical to the effectiveness of a community foundation.

In 1997, backed by three-year start up grants from ANZ and the Myer Foundation, the Melbourne Community Foundation (MCF) was established as Australia's first independent community foundation. Hayden Raysmith, who had chaired VCF, became the founding Chairperson.

"We could see from overseas examples that philanthropic giving could be the risk capital for the non-profit sector," Hayden explains.

"We knew that philanthropy could be more strategic than it had been to that stage in Australia and with MCF we seized that opportunity."

"We knew that philanthropy could be more strategic than it had been to that stage in Australia and with MCF we seized that opportunity."

Relationships, connection, and collaboration have always been, and always will be, at the heart of ACF's work, which in the words of Marion Webster, is quite simply to "create better communities for future generations."

In true grass-roots spirit, MCF operated from Marion's spare bedroom for the first three years.

"We were determined to keep the operating costs low," she explains. "The dining room table was the board table and none of our board members were token members, everyone had a job to do, getting out and talking to people and using our networks to help people think about using a community foundation as an alternative to establishing their own private foundation.

"This was the first time in Australia that people could give tax effectively in their lifetime through a simple philanthropic structure. There had been no other structure available up to that point."

Throughout the late 90s and early 2000s, MCF's vibrant donor community continued to grow and in 2011 MCF became Australian Communities Foundation (ACF) in order to better meet the needs of its supporters.



ACF founders, Marion Webster OAM and Hayden Raysmith AM

Now, as ACF celebrates 20 years of helping donors, large and small, achieve their unique philanthropic goals, the principles that underpinned the organisation from its inception still hold fast. Relationships, connection, and collaboration have always been, and always will be, at the heart of ACF's work, which in the words of Marion Webster, is quite simply to "create better communities for future generations."

PHILANTHROPY STARTS AT HOME 1997-2002

1997

- » Melbourne Community Foundation (MCF), now known as ACF, is established, June 1997 – the first community foundation in Australia.
- » Milestone: ten sub-funds established by the end of the first financial year.

1998

- » First major MCF initiative launched – Inclusive Communities Project.
- » MCF hosts a Social Investment and Community Enterprise Conference.
- » Milestone: first grants given to the community.
- » First Executive Officer appointed.

1999



- » MCF initiates the establishment of Community Foundations of Australasia as a peak body for community foundations in Australia and New Zealand, closely linked to the philanthropic sector through Philanthropy Australia.
- » Big step towards sustainability with the establishment of MCF's first sizeable sub-funds.



I have been involved with ACF for almost twenty years as an employee, donor and now volunteer. When I first started it was very small, a spare bedroom organisation! Michael and Marion were very generous to open their home and I worked as the Executive Officer for almost five years.



A community foundation was a concept whose time had really come. You could set up a fund in your lifetime. You could give away money in your lifetime. You could learn the joys of giving and understand what was happening in our community. That was, and still is, the real plus of a community foundation. It's about what we can do together to make this place a better place.

Helen Imber,
Silver Gold Fund



In the end, community foundations are about people and trust and the rich bond that comes from struggling to achieve something that you overwhelmingly believe to be worthwhile. It has to be personally satisfying and enjoyable but that sort of enjoyment only comes from hard work, from risk-taking and achieving something that was never a given or certainty.

Hayden Raysmith AM

2000

- » MCF moves out of the spare bedroom and into its first professional office space in Flinders Lane, courtesy of the Reichstein Foundation.
- » The first themed funds are created to bring even more donors into the collective giving model.
- » Together with The Education Foundation, The Women's Trust, The Stegley Foundation, and The Lance Reichstein Foundation, MCF develops Horizons, a new network for achieving social change through progressive philanthropy.

2001



- » Milestone: \$1 million in grants given since MCF's inception.



My involvement with community foundations stretches back to 1993, when I headed up the Victorian Community Foundation – Australia's first community foundation and part of ANZ Trustees' Charitable Trusts department. It was my first involvement with philanthropy – and even though I'm not from an established wealthy family, it showed me that you don't need to be rich to be a philanthropist.



In 2005, I inherited some money and decided to set up my own fund. I grew up in regional Victoria and always had a passion for the arts.

Pamela McLure,
Clack Family Memorial Fund

THE MELBOURNE YEARS 2003-2012

2003

- » MCF appoints its first full-time CEO, Dr Susan Campbell.
- » MCF moves from the CBD to Fitzroy – first to Napier Street in 2003 and then the Fitzroy Town Hall in 2012.



2004

- » MCF sharpens its focus on strategic initiatives with the help of US community foundation expert, Dorothy Reynolds. The Youth at Risk Initiative launched by then-Premier, Steve Bracks, AC.

2005

- » Milestone: 30 new sub-funds and over \$1 million in grants distributed in a financial year.

2006



- » Phase 1 of MacroMelbourne launched with the release of a discussion paper - The MacroMelbourne Initiative: Developing Strategic Responses to Disadvantage in Melbourne, today and towards 2030. \$700,000 raised for Phase 1.

The MacroMelbourne initiative was created at the time to bring sectors together to look strategically at emerging issues. We thought it would be a great project because it could inform donors about where to put their money to make the biggest difference. It was quite innovative thinking at the time, the sectors didn't talk to each other as much. The corporate, community and philanthropy sector came together in the MacroMelbourne initiative and millions of dollars went through to projects at a community level to address disadvantage.

Karen Mahlab AM





Bill Jaboor, former CEO of Hobsons Bay Council, and I established the Hobsons Bay Community Fund in 2006 as a locally based fund to enable people to give back to their neighbourhood community.

The Fund has been successful because it is supported by Council, local businesses large and small, traders and service clubs.

Since 2007, we've given 77 grants to 70 organisations with a value of \$189,000.

**Hayden Raysmith
AM, Hobsons Bay
Community Fund**

2007



- » Week of festivities with Peter Hero from Silicon Valley Community Foundation to celebrate ten years of MCF.
- » Launch of the Scholarship Fund.
- » Milestone: over 100 sub-funds, \$1.5 million in annual grants, and over \$30 million funds under management.

2008

- » Plant a seed and watch it grow: MCF's Gumnut Accounts, a philanthropy savings account designed to help donors build to a sub-fund, launch.



- » Phase 2 MacroMelbourne begins with a focus on urban growth areas of Melbourne. \$1.5 million raised in Phase 2.

The unique capacity of community foundations to convene, connect and endow is where initiatives such as MacroMelbourne pay dividends. As apolitical, objective conveners, community foundations can bring together government, the private and non-profit sectors, and other philanthropists in a way no one else can. Community foundations are also a mechanism to connect disparate parts of the community, building understanding, knowledge, and engagement. MCF connects donors with each other, enabling them to collaborate, leverage their giving with others with similar interests to create effective and rewarding networks.

Sarah Davies
2009/10 Annual Report

My parents arrived in Australia as refugees – Mum was just 19 years old and it was her dream to become a nurse.

After Mum and Dad passed away I wanted to honour their lives and contribution in a special way.

Through the fund, we've developed a scholarship in collaboration with RMIT to support students from refugee and asylum seeker backgrounds. I'm very proud to say that since 2009 we've helped eight students achieve their dreams in the field of nursing.

To me, the ACF community is like an ideas bank. You can have conversations with like-minded people, review and refine your grants, be progressive and learn how to be a better philanthropist.

**Judy Stanton,
Herbert & Inge
Littauer Fund**



Scholarships transform lives. They recognise and reward academic endeavours of the recipients and enable the donor to provide a life changing opportunity for those students who really deserve it. The Herbert and Inge Littauer scholarship provides a further benefit to the wider community by providing support to a nursing student - nurses are a vital part of our healthcare system.

**Katherine Goldman,
Senior Advisor,
Philanthropy, Alumni
and Philanthropy, RMIT
University**

2010



- » MCF participates in the first-ever Ethics in Philanthropy Debate at Melbourne Writers Festival, titled The Giving Agenda.

2011



- » MCF becomes ACF, reflecting the national presence and scope of the Foundation.

A VISION FOR A BETTER AUSTRALIA 2013-2017

2013



- » ACF commissions Savvy Giving: *The Art & Science of Philanthropy*, a practical guide on strategic giving.
- » Milestone: ACF distributes over \$5 million in grants in a single year and reaches 200 sub-funds.
- » Marion Webster OAM and Hayden Raysmith AM honored in Australia's Top 50 Philanthropic Gifts. The MacroMelbourne initiative and a grant to Australians for Affordable Housing also receive recognition.

2014

- » Milestone: \$50 million in funds under management.

2015

- » ACF transitions to an Environmental, Social and Governance (ESG) investment approach, seeking the best outcomes for the corpus, people and the planet.



Hazel Rowley was an internationally successful biographer who passed away suddenly in March 2011 aged just 59. Her death was a shock to friends and colleagues and a decision was made to do something meaningful to mark her life.

Hazel had experienced first hand how difficult it was to survive as a full-time writer in Australia, so the idea of a Writers Fellowship was thought to be the perfect way to honour her memory.

Lynn Buchanan
Hazel Rowley Literary
Fund

I was an 'emerging writer' working on a memoir at the time and I wanted to trace my family on its journey from Australia to England and back to the West Indies.

The Hazel Rowley Literary Fellowship gave me the time to write and to get away to do the research I needed to do. It was so good to have a grant that allowed me to do the work without the anxiety of having to get by!



Maxine Beneba Clarke
Recipient of the 2014
Hazel Rowley Literary
Fellowship

2016



- » The Refugee & Asylum Seeker Donor Circle wins 2016 Best Small Grant of the Year at the Philanthropy Australia Awards. This multi-year grant supported the establishment of the Refugees Rights Unit at the Human Rights Law Centre.
- » ACF's impact focus is further honed to target the key areas of social, environmental, economic and cultural justice. The Impact Fund launches in December with ACF donors, directors, staff and friends from the community.



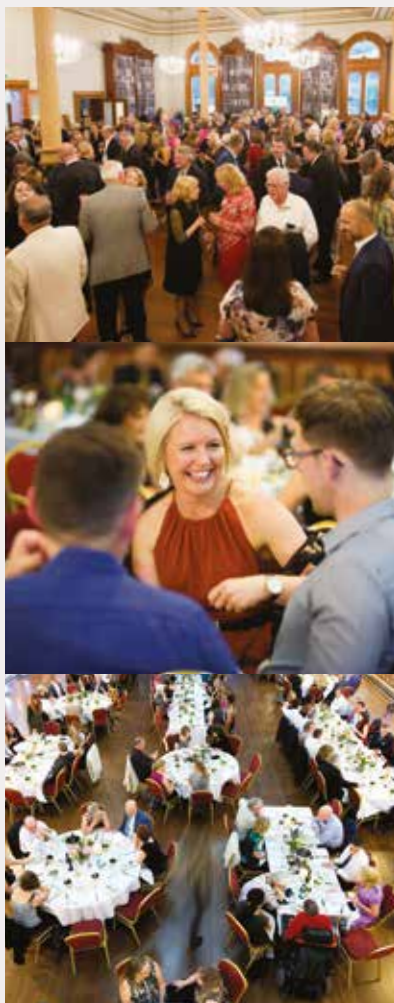
ACF's support for my first trip to Manus was hugely formative, both for me personally and for our work at the Human Rights Law Centre. The grant helped establish the Asylum Seeker and Refugee Rights Unit and build the impact that we continue to have.

Daniel Webb,
Director of Legal
Advocacy, Human
Rights Law Centre

2017



- » Milestone: inaugural Impact Fund grants announced with over \$600,000 to be given to seven projects over three years.



- » 20th anniversary celebrations.

CELEBRATING 20 YEARS

On 18 October 2017, ACF celebrated its 20th anniversary and the 10th anniversary of our friends at the Inner North Community Foundation with a special dinner at Fitzroy Town Hall.

The impact and growing potential of community philanthropy was the biggest theme of the night and we were honoured to pay tribute to our founders, Marion Webster OAM and Hayden Raysmith AM, who were inducted as Patrons of ACF.

In keeping with our community focus, we were delighted to support several social enterprises and community groups through the event including STREAT and Charcoal Lane, Outer Urban Projects, Brunswick Communities for Nature and Youthworx Productions. Special thanks also

to EnPointe Events, the Henkell Family Fund, and Stomping Ground for their contributions to the evening.

It was a night of great joy and gratitude for all that we've achieved as an organisation and the event was made even more special by the 200 inspiring guests who joined us: donors, directors, our community foundation peers, non-profits and more.

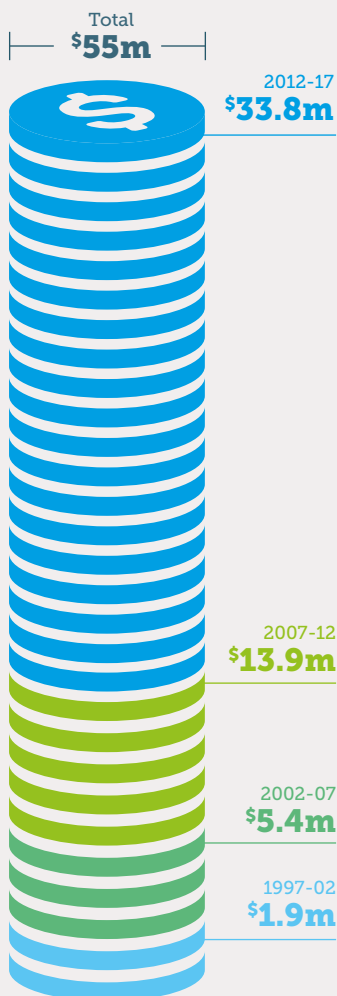
Sharing this important milestone with you all was incredibly uplifting – thank you for being there with us!



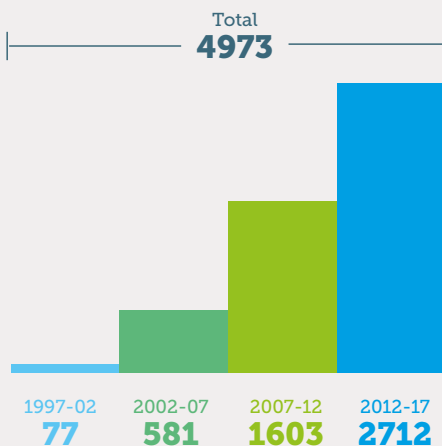
20 YEARS OF GIVING & GROWTH

We have come a long way since 1997. Take a look at our growing impact over 20 years.

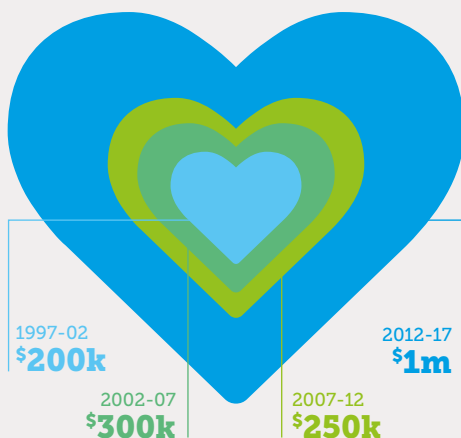
GRANT DISTRIBUTION



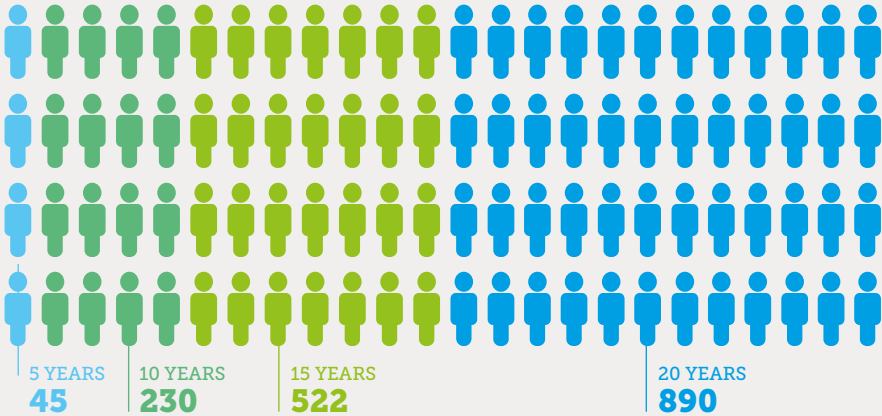
NUMBER OF GRANTS



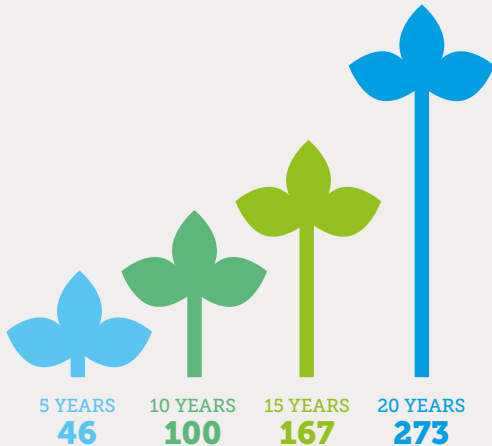
LARGEST GRANTS



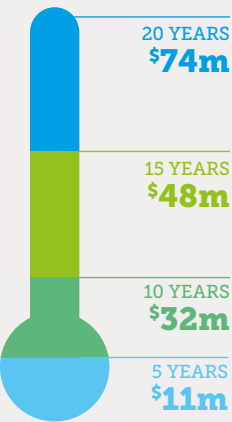
NUMBER OF ORGANISATIONS & INDIVIDUALS SUPPORTED



NUMBER OF SUB-FUNDS



CORPUS



YEAR IN REVIEW

2016/17

In 2016/17 our donor community gave \$6.4 million across a range of issues, target groups and locations. 95% of giving was within Australia with 33% going to national initiatives.

VALUE OF
GRANTS

\$6.4M

NUMBER
OF GRANTS

583

LARGEST
GRANT

\$317k

MEDIAN
GRANT

\$5000

ORGANISATIONS
& INDIVIDUALS
SUPPORTED

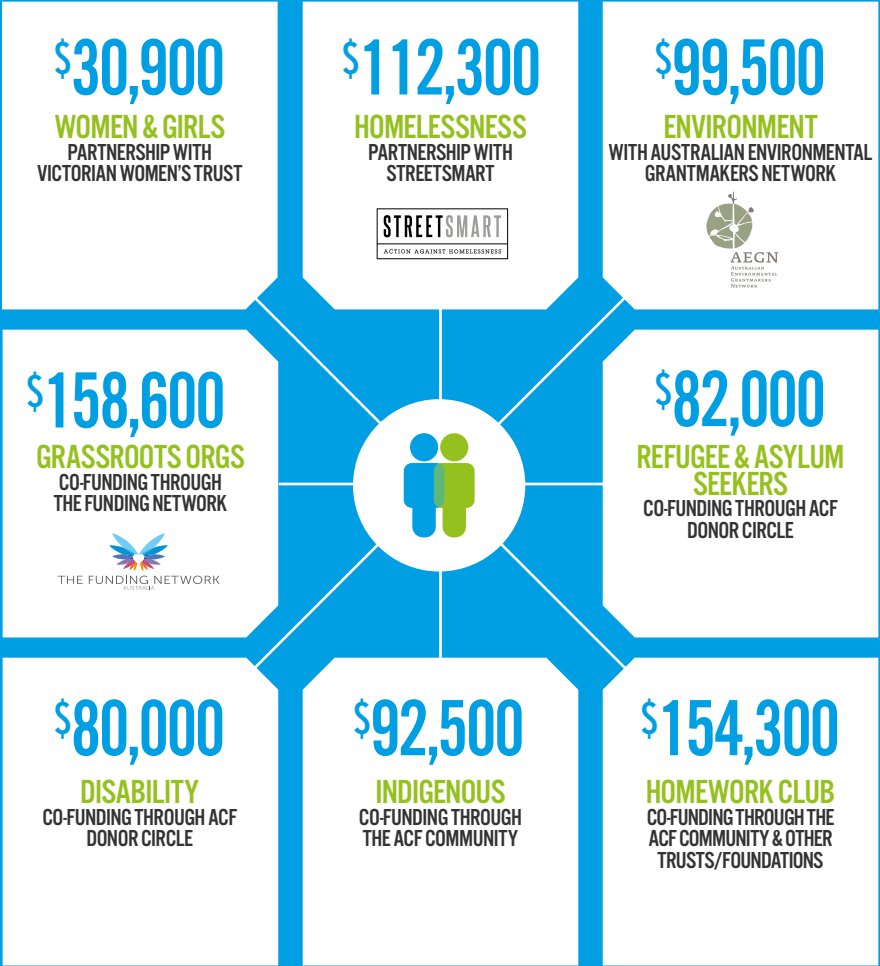
343

GRANTS
AGAINST
CORPUS
VALUE

9.8%

WORKING COLLECTIVELY

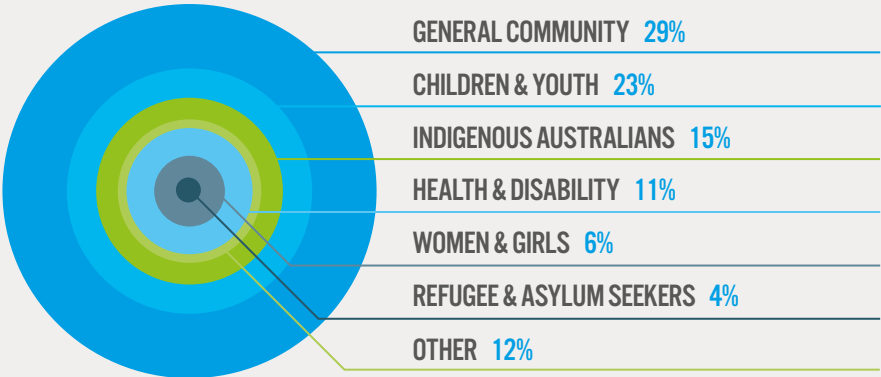
ACF supports collaborative and strategic grantmaking by helping donors connect with causes and facilitating collective action with other ACF donors and philanthropic organisations. Here is a snapshot of some of our collective efforts in 2016/17.



SUPPORTING COMMUNITIES



TARGET GROUP



SUPPORTING THE CAUSES AUSTRALIANS CARE ABOUT



HEALTH & MEDICAL
RESEARCH
23%



ARTS & CULTURE
23%



EDUCATION
14%



HUMAN SERVICES
14%



HUMAN RIGHTS
9%



COMMUNITY & ECONOMIC
DEVELOPMENT
7%



ENVIRONMENT
7%



OTHER
3%

A list of grants made in 2016/17 can be viewed at communityfoundation.org.au

IMPACT FUND

The ACF community has a proud history of engaging with social change philanthropy and giving across a wide range of issues impacting Australia. We were excited to launch the ACF Impact Fund in December 2016 and kick off the inaugural grant round in 2017.

The Impact Fund was seeded through several generous bequests and provides a platform to further harness the collective giving potential of our community and tackle the pressing issues facing our nation.

The timing of the launch of the Impact Fund is not only significant for our organisation but also for our nation as we grapple with gaps in public debate, policy, planning and spending. With these gaps come opportunities to seek out new

solutions and use our collective resources to help co-create positive social change.

Our focus is on the following impact areas that are timely, of national importance and reflect the interests and values of the ACF community:

- **Tackling inequality**
- **Empowering Indigenous communities**
- **Safeguarding the environment**
- **Strengthening democracy**

PRINCIPLES OF PRACTICE



Collaborative
leadership



Agile, solutions
focused giving



Empowering
communities



Leveraging
to build
momentum



Innovation &
learning

Find out more about the Impact Fund at
communityfoundation.org.au



“The Impact Fund is about vision, inspiration and being bold. We will work together to address systemic disadvantage, to give a voice to those who don’t have one, to fight for the values we believe in and to give collectively for a fairer Australia.”

Maree Sidey, CEO

ACF EVENTS

JULY 2016

Refugee & Asylum Seeker Circle

David Manne

Refugee Legal



Education/International Circle

Kirsty Sword Gusmao

Alola Foundation



SEPTEMBER 2016

Melbourne Writers Festival

Bob Carr & Gillian Triggs



Environment Circle

Peter Macreadie

Blue Carbon Lab

Indigenous Circle

Secretariat of National Aboriginal & Islander Child Care

Families in Philanthropy

Simon Lewis

MFCo

ACF donor panel

OCTOBER 2016

Refugee & Asylum Seeker Circle
Misha Coleman
 Australian Churches Taskforce

Shen Narayanasamy
 GetUp!

Daniel Webb
 Human Rights Law Centre

NOVEMBER 2016

ACF Open House

Community Partnerships
 Dame Julia Cleverdon

DECEMBER 2016

End of Year Celebration



FEBRUARY 2017

Philanthropy 101
 Introduction to ACF

MARCH 2017

Zach's Ceremony Screening
 Good Pitch

MAY 2017

Disability Services

Graeme Kelly
 The Tipping Foundation
Bronwyn Morkham
 Young People in Nursing Homes,
 National Alliance
Stephanie Gotlib
 Children & Young People Disability
 Australia

**Philanthropy in the Age of Radical
 Inequality**
Jason Franklin

**Whittlesea Community Partnership
 Prospectus Launch**



JUNE 2017

Indigenous Circle

Refugee & Asylum Seeker Circle
Ramesh Fernandez
 RISE - Refugees, survivors and
 ex-detainees

WELCOME TO ACF

The following sub-funds and Gumnuts were established in 2016/17. A warm welcome to all the new donors who have joined our growing community over the last year.

SUB-FUNDS (MINIMUM STARTING BALANCE \$20,000)

Beeton Family Fund

Melbourne Writers Festival Fund

Clive St

Misericordiae

Dominic & Anne
Gallace Family Fund

Muna Rahman Fund

Impact100 Sydney North

Southern General
Practice Education Fund

Impact100 Tasmania

Team Miller

Kaplan Dascalu Fund

The Giving Well

KSR Accommodation
Scholarship Fund

THLOW

Lois Bryson

Walker Wayland Australasia Fund

Marimingo Fund

Windarra Fund



GUMNUT ACCOUNTS (CONTRIBUTE \$2,000 PER ANNUM)

Amos Family Account

Kimberley Youth Fund

Demeter Legacy Fund

Pathfinder Research Fund

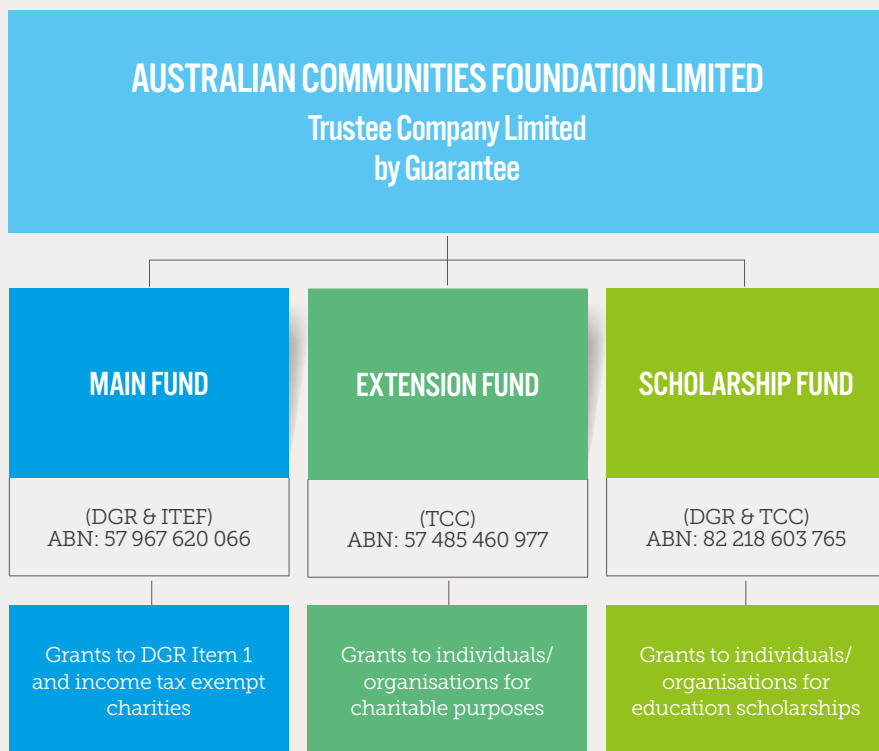
Gumnut One

The Orchards Fund

**Katerina Persic & Dominic
Gleeson**

FINANCIAL SUMMARY

ACF operates three charitable trust funds providing flexibility and options to suit individual tax requirements and areas of interest.



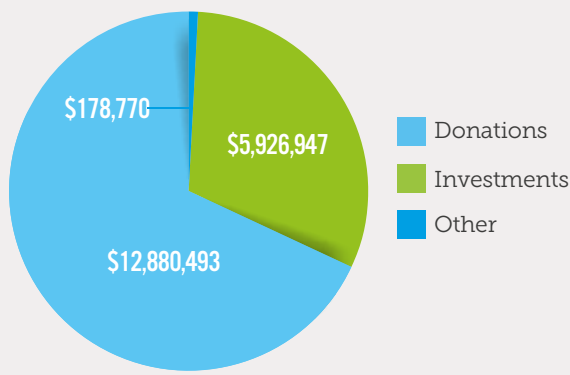
DGR: Deductible Gift Recipient status. A DGR is an organisation that is entitled to receive income tax deductible gifts and deductible contributions. Item 1 Item 2.

ITEF: Income Tax Exempt Fund. Registered charities must be endorsed by the Australian Tax Office to be income tax exempt.

TCC: Tax Concession Charity. A TCC is endorsed by the Australian Tax Office to access one or more of the following tax concessions: income tax exemption, goods and services tax (GST) charity concessions, fringe benefits tax (FBT) rebate and FBT exemption.

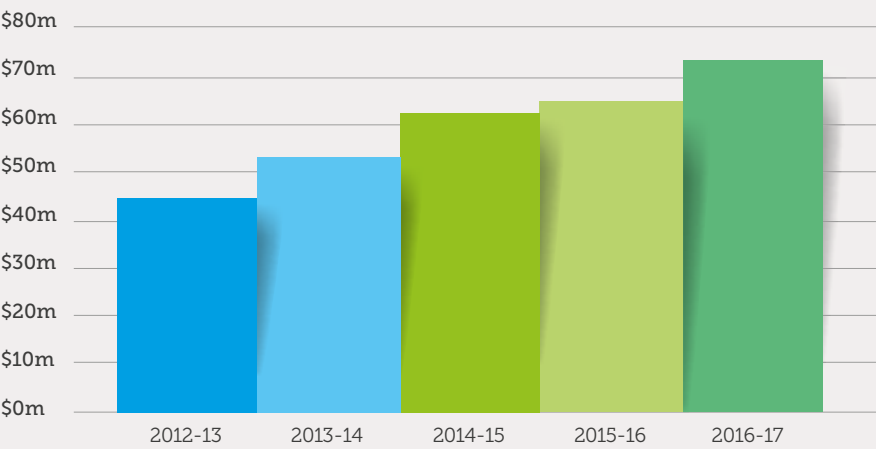
REVENUE

In 2016/17, ACF achieved \$19 million in revenue. Total donations during the year amounted to \$12.9 million. Investment portfolio returns accounted for \$5.9 million and the balance came from our consulting service and other activities.



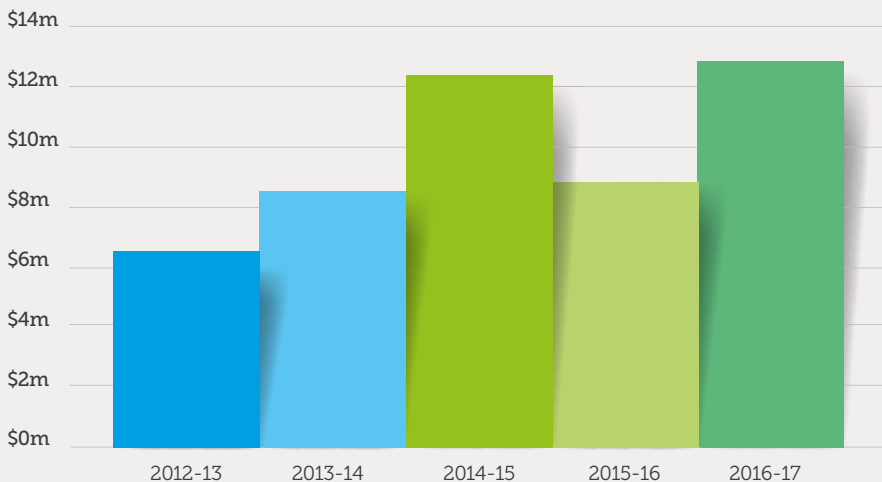
CONTINUED GROWTH

At June 2017, the ACF corpus was \$74 million, an increase of \$9 million from the previous year.



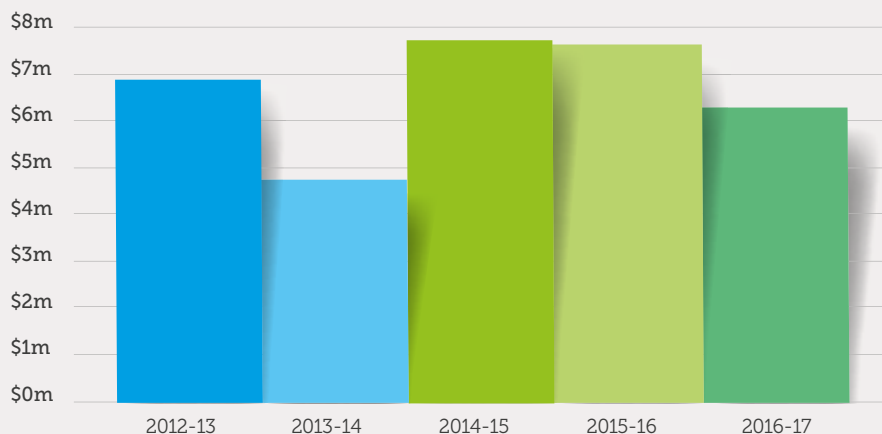
DONATIONS

Donations were strong with a record total of \$12.9 million received in 2016/17.



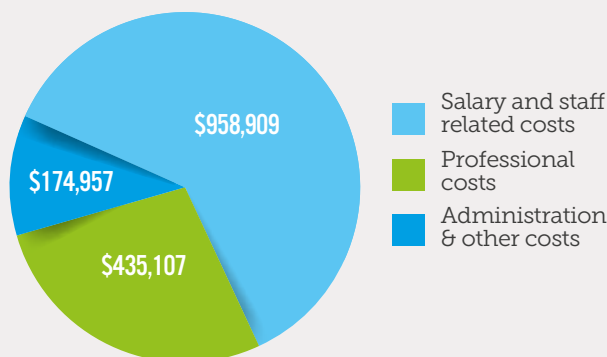
GRANTS

Grants for the year were \$6.4 million, 9.8% of the total corpus.



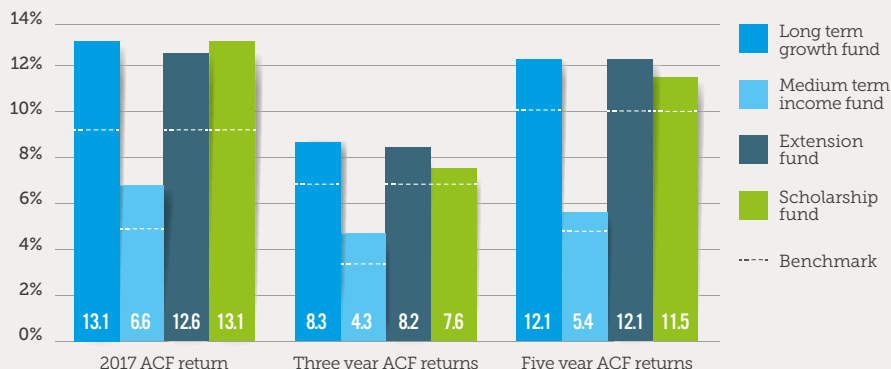
OPERATIONS

Total operating costs were \$1.6 million, an increase on the previous year due to an increase in activities and organisational capacity.



INVESTMENT PERFORMANCE

Investment returns were strong and well above benchmark – the ACF Long Term Growth Fund returning 13.1% and the Medium Term Income Fund returning 6.6%. Returns analysis from JBWere confirmed that our ethical investment strategy delivered returns 2.5% higher than our previous investment strategy – a great endorsement for our move to ethical investing. We were pleased to see the *2017 Responsible Investment Report* which shows that ethical investment funds are consistently outperforming average mainstream funds.



SUMMARY

Revenue	\$
Donations	12,880,493
Investment	5,926,947
Other	178,770
Total	18,986,210

Outgoings	\$
Granting	6,403,394
Operating costs	1,568,973
Sub-fund expenses	190,605
Portability distributions	1,887,044
Total	10,050,016

Breakdown of operating costs	\$
Salary & staff related costs	958,909
Professional costs	174,957
Administration & other costs	435,107
Total	1,568,973

Accumulated funds	2017 net assets \$	2016 net assets \$
ACF Main Fund	60,637,114	54,787,615
Extension Fund	12,781,135	9,733,696
Scholarship Fund	565,475	526,219
Total	73,983,724	65,047,530

Complete financials can be viewed at
communityfoundation.org.au



OUR TEAM 2018

Maree Sidey

Chief Executive Officer

DEVELOPMENT & DONOR RELATIONS

Julie Rae

Head of Development
& Donor Relations

Melina Rookes

Marketing & Communications
Coordinator

Raz Babic

Donor Services Officer

Helen Imber

Volunteer Program Coordinator

PHILANTHROPY & IMPACT

Louise Kuramoto

Head of Philanthropy & Impact

Georgia Mathews

Grants Coordinator

Femke Bosman

Impact & Evaluation Manager

Daphne Tan

Grants Support Officer

Sophie Waincymer

Grants Coordinator

FINANCE & ADMINISTRATION

Daniel Brugaletta

Chief Financial Officer

Christine Selle

Executive Assistant to CEO


Charlie Li

Management Accountant

CONSULTING SERVICE

Trudy Wyse

Marion Webster OAM



We would like to thank Alex Carroll, Therese Howell, Mary Latham, Kate Linton, Eshan Sandanayake, Sarah Thompson and Sarah Trainor for their contribution to ACF in 2016/17. A warm welcome to Daniel Brugaletta, Louise Kuramoto, Charlie Li, Georgia Mathews, Julie Rae and Daphne Tan.

BOARD OF DIRECTORS

2016/17



David Murray
(Chair) BA, DipCrim, MA



Michael Gilmore
BEcon, GradDip Financial
Planning, CFP (FPA)



Gayle Hardie
Dip MKTC; B.Sc; MA,
AFAIM, MAICD



Sarah Hosking
PhD, FAICD



David Imber
BA, LLB



George Krithis
BBus CFP (FPA), CPA
(FPS – ASCPA)



Pamela McLure
BA, DipSoc, MA



Steve Rothfield
BCom, MBA, CPA



Catherine Smith
BSc (SpHons) MSF,
FIPAA (Vic)



Samantha Smith
BBus (Mktg), MA, DBA



Emma Woolley
LLB (Hons)

COMMITTEE MEMBERS

2016/17

DEVELOPMENT & DONOR RELATIONS COMMITTEE

Samantha Smith (Chair)

Steve Rothfield

Sarah Hosking

Emma Woolley

FINANCE, RISK, AUDIT & INVESTMENT COMMITTEE

George Krithis (Chair)

Michael Gilmore

Steve Bradby

Tristan Lloyd

Sue Dahn

Steve Rothfield

Ryan Dummett

Casey Tan

PHILANTHROPY & IMPACT COMMITTEE

David Murray (Chair)

Pamela McLure

David Imber

Cath Smith

Gayle Hardie

Peter Van Duyn

Loretta Mannix-Fell

THANK YOU

There have been many people who have made an important contribution to ACF over the past 20 years. Our heartfelt thanks to our community of donors, the Board of Directors and committee members, volunteers and partners who have generously given their resources and time.

FOUNDERS & PATRONS

A special thanks to our Founders and Patrons, **Marion Webster OAM** and **Hayden Raysmith AM**, for their vision and dedication in pioneering the community foundation movement in Australia.



We would also like to acknowledge the valuable support we've received in 2016/17 from the following partners and friends.

IN KIND

Helen Imber

Chris Gillies

Peter Brown

FINANCIAL

Alf & Meg Steel Fund

B B & A Miller Fund

Beecher Family Charitable Fund

Clare Murphy Fund

Global Leadership Fund

Smith and Carrick Family

Sunning Hill Fund

Williams Fund

ADVISORS (IMPACT FUND)

Dennis Altman

Esther Abram (Australasian Environmental Grantmakers Foundation)

Hugh de Kretser (Human Rights Law Centre)

John Spierings (Reichstien Foundation)

Sheena Watt

Fred Chaney AO

Belinda Duarte

PARTNERS





Fitzroy Town Hall
201 Napier St
Fitzroy VIC, 3065
03 9412 0412
admin@communityfoundation.org.au
communityfoundation.org.au

This has been printed on recycled paper with CO2 Savings of 577kgs.

February 2018