

GIVING FOR A FAIRER AUSTRALIA



GRANTS & FUNDS 2015/16

AUSTRALIAN COMMUNITIES FOUNDATION

At Australian Communities Foundation (ACF), our vision is to inspire and enable great philanthropy – the kind of philanthropy that ignites positive social change and makes our communities healthier and more resilient. We're unapologetic believers in the power of collective effort, which is why our community of donors sits at the heart of everything we do.

HOW WE WORK

Our mission is to make philanthropy accessible and easy by providing the tools, support and expertise our donors need to achieve their unique philanthropic goals.

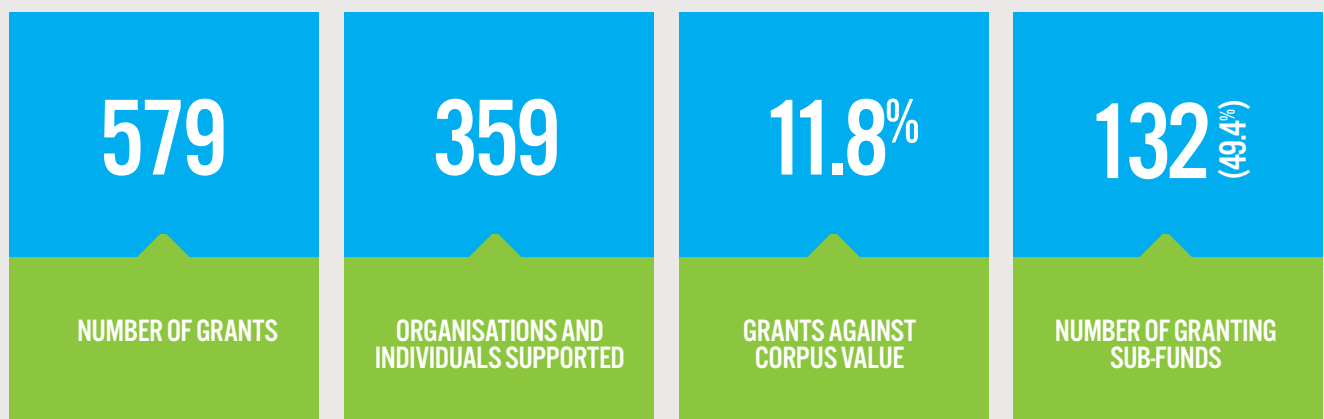
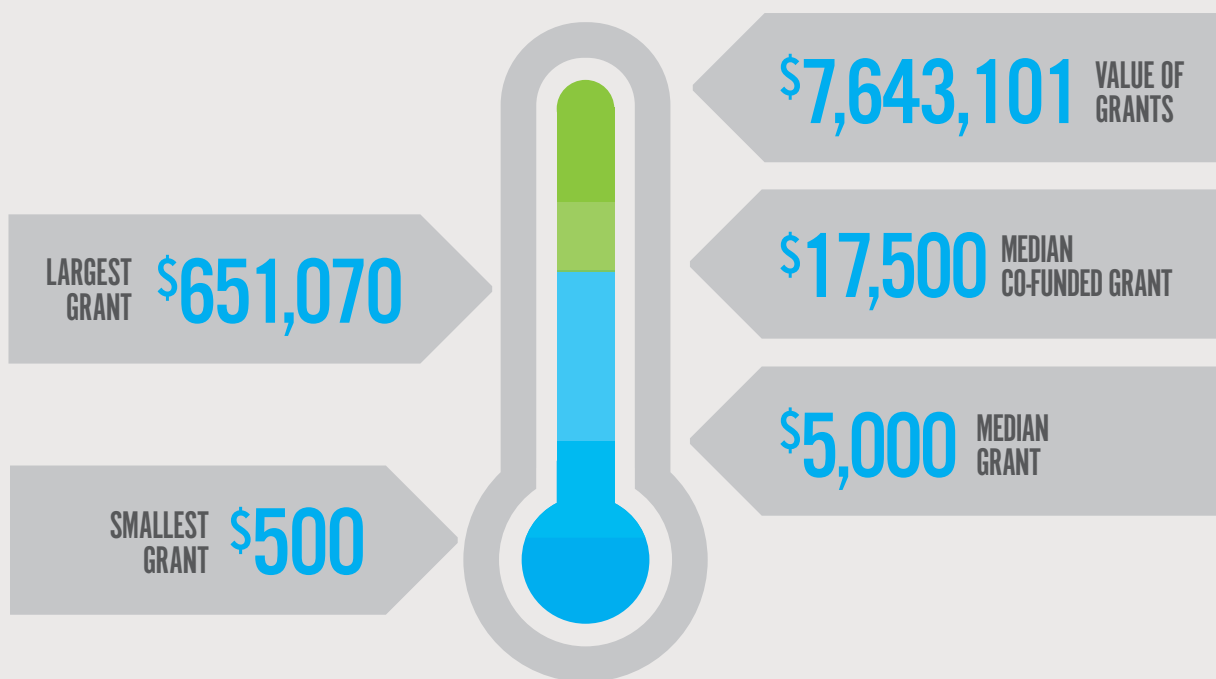


"At ACF, our donors aren't on their own – they're part of a community with other like-minded Australians who want to support social change."

Maree Sidey, CEO, Australian Communities Foundation

IMPACT IN 2015/16

AT A GLANCE...



IMPACT IN 2015/16

WORKING COLLECTIVELY

The ACF Team support collaborative and strategic grant making by helping donors connect with causes and facilitating collective action with ACF donors and other philanthropic organisations.

Collaborative efforts increased in 2015/16 in areas such as international development, environmental sustainability, asylum seeker advocacy and pokies reform.

Collaborative grants were 3.5 times the average ACF sub-fund grant, highlighting the greater impact our donors can have when working together.

ACF also partnered with other philanthropic funders on 13 separate grants, leveraging additional funds for important causes across the country.

NUMBER OF DONOR ADVISED GRANTS

473

AMOUNT GIVEN THROUGH DONOR ADVISED GRANTS

\$5,417,801

NUMBER OF ACF ADVISED GRANTS

93

AMOUNT GIVEN THROUGH ACF ADVISED GRANTS

\$946,700

NUMBER OF GRANTS CO-FUNDED WITH OTHER ORGANISATIONS

13

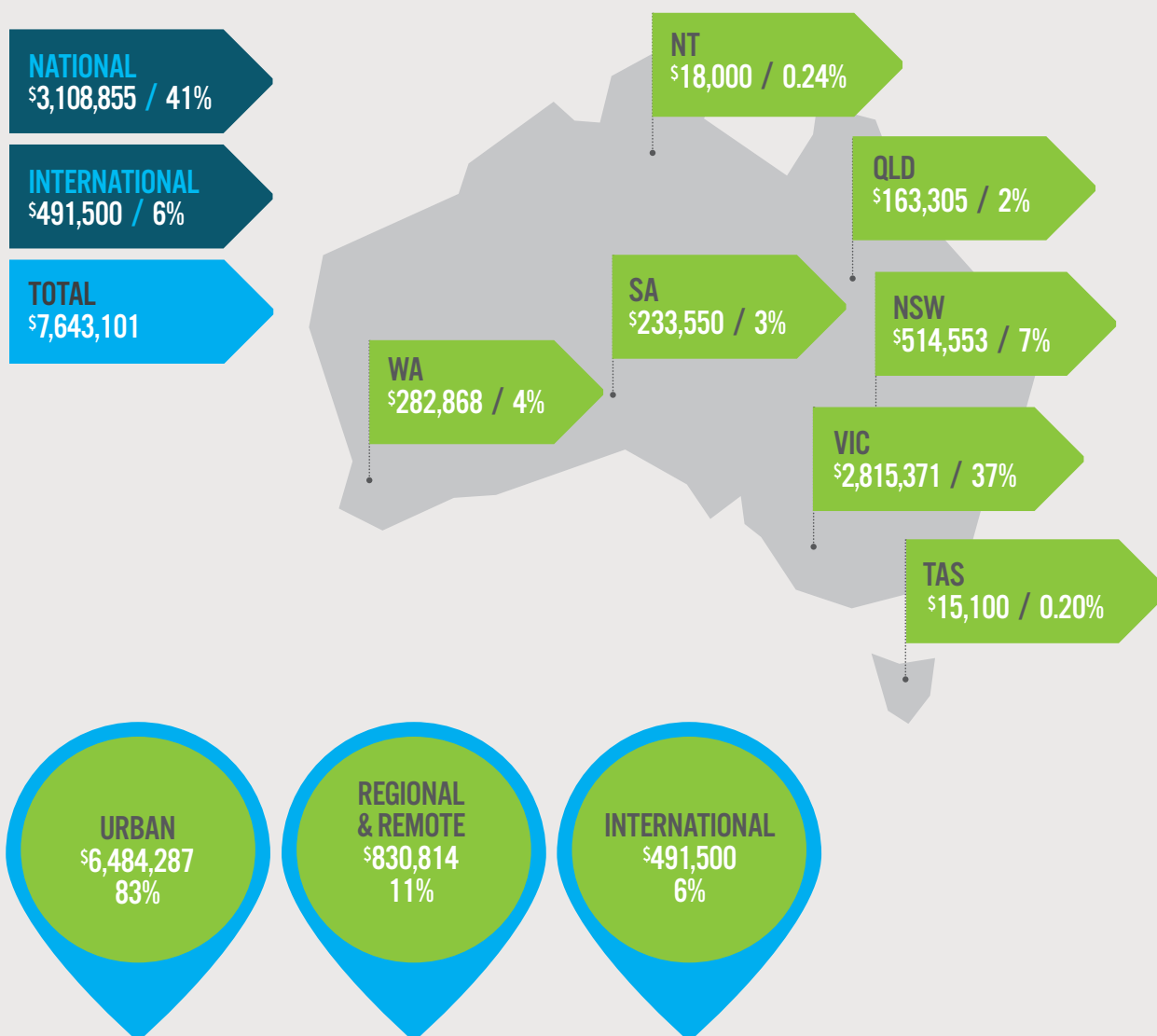
AMOUNT GIVEN THROUGH CO-FUNDED GRANTS WITH OTHER ORGANISATIONS

\$1,278,600

SUPPORTING AUSTRALIAN COMMUNITIES

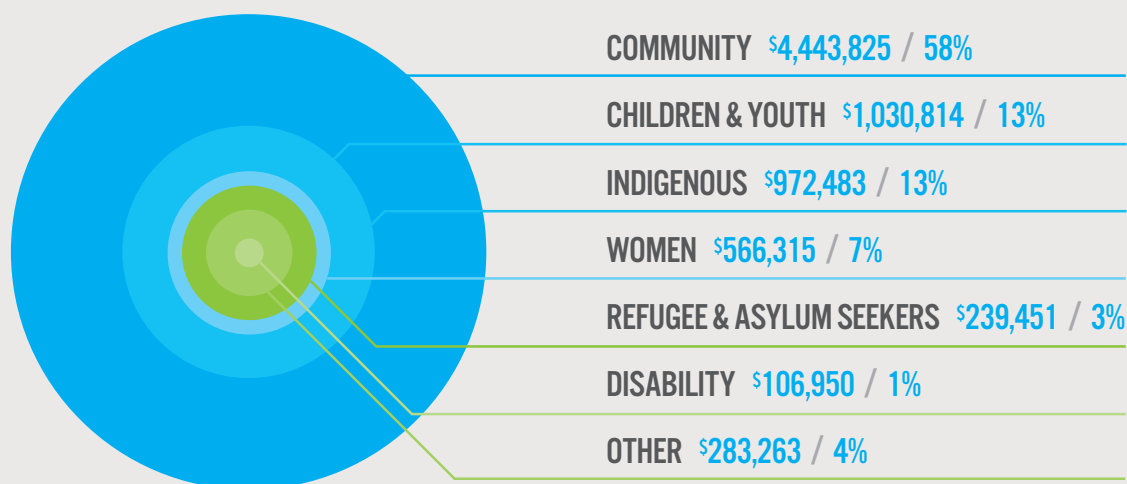
2015/16 was the first year that granting to national projects has been higher than granting to Victorian-based projects. This is a marked shift for ACF and reflects the growing interest of our donor community in issues affecting the nation as a whole.

Our granting supported urban and regional communities across Australia. ACF's partnership with the Foundation for Rural & Regional Renewal has facilitated more grant making in regional and rural areas and has been very helpful for our donors who like to keep their philanthropy local.



IMPACT IN 2015/16

TARGET GROUP



SUPPORTING THE CAUSES AUSTRALIANS CARE ABOUT



**EDUCATION, TRAINING
& EMPLOYMENT**
\$2,559,610 / 33%



ARTS & CULTURE
\$1,584,446 / 21%



**COMMUNITY SERVICES
& SUPPORT**
\$939,305 / 12%



**HEALTH & MEDICAL
RESEARCH**
\$869,565 / 11%



**ENVIRONMENT
& CONSERVATION**
\$731,500 / 10%



**SOCIAL JUSTICE, HUMAN
RIGHTS & INEQUALITY**
\$503,675 / 7%



**OVERSEAS AID
& DEVELOPMENT**
\$455,000 / 6%

TOTAL
\$7,643,101

GRANTS

RECIPIENT	PROJECT	FUND
Arts & Culture		
3RRR Transmission Fund	Transmission Chain Infrastructure Improvements	Miller Fund
45 Downstairs Inc	Assist Play Readings, Artist Awards and Development Projects	Hart Line Fund
45 Downstairs Inc	General support	Ballandry (Peter Griffin Family) Fund
Abbotsford Convent Foundation	General purposes	Henkell Family Fund
Abbotsford Convent Foundation	Maintenance/Continuing Development of the Gardens	B B & A Miller Fund
Australian Bach Society	JS Bach Weihnachtsoratorium 2015	Henkell Family Fund
Australian Centre for Contemporary Art	Accer Backer	Sally Browne Fund
Australian Chamber Orchestra	General purposes	Ballandry (Peter Griffin Family) Fund
Australian International Opera Award	General Support	Henkell Family Fund
Australian National Academy of Music	General purposes	Sunning Hill Fund
Australian Youth Orchestra Appeal Trust Fund	General Support	Henkell Family Fund
Bangarra Dance Theatre	Artist in Residence	Annamila Fund
Bangarra Dance Theatre	General Purposes	Annamila Fund
Big West Festival	Big West House Project	Initiate Action Community Fund
Circus Oz Cultural Fund	General Purposes	Annamila Fund
CitiOpera	Cenerentola opera	Henkell Family Fund
CitiOpera	Opera – Ariadne of Naxos	Henkell Family Fund
Co Opera Inc	The Mikado in 2016	Henkell Family Fund
Documentary Australia Foundation	Program Development	Beecher Family Charitable Fund
Dungala Kaiela Foundation	Dungala Kaiela Writing Awards 2016	Fairer Futures Fund
Flinders Quartet	Commission of the Piano Quintet	Gumnut One
Human Rights Arts & Film Festival Gift Fund	Schools & Community Outreach Screening Program	Hart Line Fund
Jam Factory Contemporary Craft & Design Inc	General Purposes	Carreker Community Fund
Jam Factory Contemporary Craft & Design Inc	Medici Collective	Ballandry (Peter Griffin Family) Fund
Lyric Opera of Melbourne	Stella	Henkell Family Fund
Malthouse Theatre	"Suitcase" series; and Page to Stage	Willmore Fund
Malthouse Theatre	General Purposes	Sally Browne Fund
McClelland Gallery and Sculpture Park	General Purposes	Annamila Fund
Melba Opera Fund	General purposes	Ballandry (Peter Griffin Family) Fund
Melba Opera Fund	General Support	Henkell Family Fund
Melba Opera Fund	RJ Hamer and AF Hamer Scholarship 2016	Hamer Family Fund

RECIPIENT	PROJECT	FUND
Arts & Culture		
Melbourne Bach Choir	St Matthew Passion 2016	Henkell Family Fund
Melbourne Chamber Orchestra Donation Fund	2016 Program	Harmer Family Fund
Melbourne Chamber Orchestra Donation Fund	Bach: Spirit & Spectacle	Henkell Family Fund
Melbourne Festival	General Purposes	Sally Browne Fund
Melbourne Festival	Patrons Circle	Sally Browne Fund
Melbourne Fringe Fund	General support Fringe Festival	Sally Browne Fund
Melbourne Recital Centre Public Fund	General Purposes	Annamila Fund
Melbourne Symphony Orchestra Fund	General purposes	Henkell Family Fund
Melbourne Symphony Orchestra Fund	General Purposes	Trikojus Education Fund
Melbourne Welsh Male Choir	Concert with Teddy Tahu-Rhodes Programme	Henkell Family Fund
Melbourne Writers Festival	General Purposes	Hart Line Fund
Melbourne Writers Festival	General Purposes	Sally Browne Fund
Michael Petrucelli	Opera study	Sylvia Fisher Fund
Monash University	Indigenous voice: art, language and animation	Elizabeth Eggelston Fund
More Than Opera	General Purposes	Henkell Family Fund
Musica Viva Development Fund	Musical Education in regional and remote areas	Harmer Family Fund
Musica Viva Development Fund	New program in schools	Ballandry (Peter Griffin Family) Fund
National Trust of Australia (Victoria)	General Purposes	Beecher Family Charitable Fund
Opera Australia	General purposes	Ballandry (Peter Griffin Family) Fund
Opera Australia	Opera Australia Patrons Program	Henkell Family Fund
Opera Scholars Australia Trust	General Purposes	Henkell Family Fund
Outback Gondwana Foundation	Eromanga Natural History Museum	Rod and Pamela Wells Community Fund
Peninsula Summer Music Festival Public Fund	Opera Singers Support	Henkell Family Fund
Queensland Theatre Company	Dead Puppet Society: The wider earth	Harmer Family Fund
Queensland Theatre Company	General Purposes	Davie Family Fund
Shepparton Art Gallery	Indigenous Ceramics Art Award 2016	Fairer Futures Fund
Short Black Opera Company	Pecan Summer	Annamila Fund
Somebody's Daughter Theatre Inc	General Purposes	Annamila Fund
State Orchestra of Victoria	General purposes	Henkell Family Fund
Stella Prize Inc Public Fund	General purposes	Koshland Innovation Fund
Sydney Festival	Woyzeck production	Henkell Family Fund
The Art Gallery Board (Art Gallery of South Australia)	Biennial Ambassadors Program	Carreker Community Fund
The Arts Centre	General purposes	Henkell Family Fund
The Australian Ballet	The Kristian Fredrikson Scholarship	Kristian Fredrikson Scholarship

RECIPIENT	PROJECT	FUND
Arts & Culture		
The Lieder Society of Victoria	Annual Liederfest 2016	Henkell Family Fund
The Melbourne Opera Company Limited	Conrad Olszewski	Sylvia Fisher Fund
The Melbourne Opera Company Limited	The Abduction from the Seraglio performance	Henkell Family Fund
The Opera Studio Melbourne	Two fellowships 2016	Henkell Family Fund
The Richard Wagner Society Special Productions Fund	General Purposes	Henkell Family Fund
Victorian Opera Company Ltd	The Foundation Leaders' Circle; Artists' Circle	Henkell Family Fund
Wheeler Centre	General Purposes	Sally Browne Fund
Writers Victoria	Hazel Rowley Literary Event	Hazel Rowley Literary Fund

RECIPIENT	PROJECT	FUND
Community Services & Support		
Able Australia Services	Update Usher Syndrome Information Kit	P&B Hyams
Aboriginal Evangelical Fellowship Family and Youth Services	Community Chaplains Ministry	Ralph & Betty Sims Fund
Altona Meadows Kindergarten and Maternal Health	Sensory Garden	Hobsons Bay Community Fund (Extension)
Ardoch Youth Foundation Inc	Frankston East Breakfast Program	Alice Sloan Fund
Ardoch Youth Foundation Inc	Frankston East Breakfast Program	Grigg Family Fund
Ardoch Youth Foundation Inc	Music Program	The Robison Fund
Asylum Seekers Centre Inc	General Purposes	The Ripple Fund
Asylum Seekers Resource Centre	General Purposes	Grigg Family Fund
Australian Community Support Organisation	8th ACSO International Criminal Justice Conference	Global Leadership Fund
Australian Council of Christians and Jews	Book Publication	Henkell Family Fund
Australian Council of Christians and Jews	General Purposes	Henkell Family Fund
Australian Council of Social Services	Poverty in Australia Report	B B & A Miller Fund
Australian Federation of Disability Organisations	Build Capability and Sustainability of the National Disability Consumer Sector	Paterson Family Fund
Baptcare	Houses of Hope	B B & A Miller Fund
Baptcare	Start with Art	EastWeb Fund
Befriend Inc	General Purposes	P J & J P Murphy Fund
Berry Street Victoria	General Purposes	Grigg Family Fund
Big Brothers-Big Sisters Australia	Start 100 Program	Dennoch Fund
Brisbane Youth Service Inc	General Purposes	Holding Redlich Social Justice Fund
Brotherhood of St Laurence	Younger Onset Dementia project + general community funding	Hart Line Fund
Brotherhood of St Laurence	Woor-Dungin IT Manager position	Fairer Futures Fund
Brotherhood of St Laurence	Woor-Dungin IT Manager position	Towards a Just Society Fund
Brotherhood of St Laurence	Education Packs	Dina Grollo Community Fund
Brotherhood of St Laurence	Breakfast Club	Dina Grollo Community Fund
Centre for Education and Research in Environment and Conservational Strategies	The Community Grocer	Hamer Family Fund
Cerebral Palsy Alliance	General purposes	Geostudies Fund
ChilOut	Youth Ambassadors Program	B B & A Miller Fund
City Life Inc	Salary of Operations Manager	B B & A Miller Fund
Cricket Victoria	Lohy's Legends - Cricket clinics	John Cummins Memorial Fund (Extension)
Dallas Brooks Community Primary School	Crafty Cake Club	EastWeb Fund (Extension)
Dja Dja Wurrung Clans Aboriginal Corporation	Aboriginal Object Collection Recording	EastWeb Fund
Dungala Kaiela Foundation	Rumbalara Club Youth Development Project 2016	Fairer Futures Fund
Early Childhood Management Services	Newport Gardens 'Generation Games'	Hobsons Bay Community Fund (Extension)

RECIPIENT	PROJECT	FUND
Community Services & Support		
EON Benevolent Fund Inc	EON Thriving Communities Program	Impact 100 WA
First Step Program ltd	General Purposes	FGM Charitable Fund
Flemington and Kensington Community Legal Centre	Melbourne Graffiti Removal Project	Ballandry (Peter Griffin Family) Fund
Foundation For Rural and Regional Renewal	Bass Coast L2P program	Gerard Patrick Lonergan Scholarship Fund
FVPLS Victoria	An Evening with Sisters Day Out	Towards a Just Society Fund
Ganbina	General purposes	Sunning Hill Fund
Gateway Community Services	Information Sessions for Floyd Lodge & W'town High Rise	Hobsons Bay Community Fund
Gateways Support Services	Re-development autismhelp.info	Howard McGeary Charitable Fund
Global Care Australia	Trucking to Feed Families, Hungry School Children and Homeless	Wanless Family Fund
Good 360	General Purposes	Impact 100 South Australia
Guide Dogs for the Blind Association of Queensland	Shading facilities	Kinder Charitable Fund
Guilford Young College	Birthplace of a City Project	Glenorchy Community Fund
Heads Together for ABI	YMCA weekend family camp	Alice Sloan Fund
Heads Together for ABI	Heads Together Camp	Alice Sloan Fund
Hills Community Aid	Parenting for School Readiness	Slater & Gordon Community Fund
Home Ground Services	General Purposes	Dumbarton Fund
Joseph's Corner	Life Skills Program	Hobsons Bay Community Fund
Kalparrin	Family and Sibling Support Program	Impact 100 WA
Kids Under Cover	General purposes	Dina Grollo Community Fund
Kids Under Cover	General purposes	FGM Charitable Fund
Kids Under Cover	Studio contribution	EM Horton Family Fund
Kildonan Uniting Care	Kildonan	P J & J P Murphy Fund
Launch Housing	General Purposes	Dumbarton Fund
Laverton P-12 College	Engaging fathers with their children	Hobsons Bay Community Fund (Extension)
Lentara UnitingCare	Housing Assistance for Asylum Seekers	P&B Hyams
Maleny Neighbourhood Centre	Youth Outdoor Kitchen	Slater & Gordon Community Fund
Mansfield Historical Society	Guards Van Restoration	Mansfield Community Fund
Martin Luther Homes Boronia Inc	General Purposes	Henkell Family Fund
Mary Potter Foundation Inc	Hospice Family Kitchen	Carreker Community Fund
McAuley Community Services for women	General Purposes	Wanless Family Fund
Men's Shed Natimuk	Community Funding	Anonymous
Mullum SEED	ENOVA: Video Production	Hamer Family Fund
National Trust of Australia (Victoria)	St Marys Parish	Finch Fund

RECIPIENT	PROJECT	FUND
Community Services & Support		
Ngaanyatjarra Pitjantjatjara Yankunytjatjara (NPY) Women's Council Domestic Violence Service	Safety for Women and Children	The Ripple Fund
Point Lookout Surf Life Saving Club	Seahorse Nippers Program	Slater & Gordon Community Fund
Prahran Mission	General purposes	Ralph & Betty Sims Fund
Prahran Mission	General Support	Hopetoun Fund
Queen of Peace Primary School	Sensory / Native Garden	Hobsons Bay Community Fund (Extension)
Riding for The Disabled Association of Victoria Inc	Shepparton branch of RDA - general support	Rod and Pamela Wells Community Fund
RuralAidLtd	BuyABale	Wanless Family Fund
Salvation Army Australia Eastern Territory Social Work	Pathways Program - Oasis Youth Network	Dina Grollo Community Fund
Salvation Army Southern Territory Social Work	General Purposes	Dina Grollo Community Fund
Salvation Army Southern Territory Social Work	General Purposes	Hopetoun Fund
SBH Queensland Inc	Mobility Program for children with spina bifida	Slater & Gordon Community Fund
Scotch College Foundation	Sir Zelman Cowen Centre for Science	Ashworth Family Fund
Scripture Union Queensland	Noosa District High Chaplaincy Program	Keith & Jeannette Ince Fund
Scripture Union Victoria	General Purposes	Ralph & Betty Sims Fund
Seabrook Kindergarten Association Inc	Cultural Community Cooking Program	Hobsons Bay Community Fund (Extension)
SecondBite	General Purposes	John and Eileen Clark Family Fund
SecondBite	General Purposes	Charles David Fund
Soldier On Association	General purposes	Betty Fulton Fund
Southern Peninsula Community S&I Centre	Food for All	Ashworth Family Fund
Streat	Building Cromwell Manor	Wanless Family Fund
Streat	General Purposes	Semaphore Fund
Tabulam and Templer Homes for the Aged Inc	Australian German Welfare Society	Henkell Family Fund
Tabulam and Templer Homes for the Aged Inc	General Support	Henkell Family Fund
The Australian Centre for Social Innovation	Family by Family	Impact 100 South Australia
The Father Bob Maguire Foundation	Meals and hamper collections	Beltana Fund
The Funding Network	Non-profit Manager for TFN	Steve Lawrence Social Innovation Non-Tax Deductible Fund
The Link Centre ltd	Residential Camp for Youth	Hobsons Bay Community Fund
The Lost Dogs Home	General purposes	Sunning Hill Fund
The Neighbours Place	Emergency food relief	Wanless Family Fund
The Smith Family	Girls at the Centre	DDJE Fund
The Smith Family	Back to School Appeal	Geostudies Fund
The Smith Family	General Purposes	Geostudies Fund
The Smith Family	Wyndham Schools Community Hub	Dennoch Fund

RECIPIENT	PROJECT	FUND
Community Services & Support		
The Thathangathay Foundation	Employment Program	Beecher Family Charitable Fund
The Thathangathay Foundation	Employment Program	Katrina's Sparkle Fund
TheBower	Community Repair Café	Wanless Family Fund
Variety Victoria - the Children's Charity	Variety 4WD Trek	Finch Fund
Victorian Blue Light State Council	Yarra -Wild Beasts	Espero Fund
Victorian Foundation for Survivors of Torture Inc	Client Assistance Fund	B B & A Miller Fund
Victorian Foundation for Survivors of Torture Inc	Client Assistance Fund	Grigg Family Fund
Volunteering of SA and NT inc	Aboriginal Volunteer Program 2016	Sally Oatley Memorial Fund
Western English Language School	Promoting Multiculturalism through Planting, Harvesting, and Cooking in the Student Garden	EastWeb Fund (Extension)
White Lion Incorporated	General Purposes	Dina Grollo Community Fund
White Lion Incorporated	Young Women's Support Service	Vicki Standish Family Fund
Windgap Foundation	Sailability	Slater & Gordon Community Fund
Women's Legal Service	Telephone service upgrade	Slater & Gordon Community Fund
Youth Off The Streets Limited	Don Bosco Youth Refuge	Holding Redlich Social Justice Fund
Youth Off The Streets Limited	General Purposes	Dina Grollo Community Fund
YWCA – NSW	Big Brothers - Big Sisters Program	Beecher Family Charitable Fund
YWCA Adelaide	She Counts	Impact 100 South Australia
Zonta House	Positive Pathways program	Ballandry (Peter Griffin Family) Fund

RECIPIENT	PROJECT	FUND
Education , Training & Employment		
Abbotsford Convent Foundation	Sapling School Program	Harner Family Fund
Alexandra Secondary College	General purposes	Alice Sloan Fund
Ardoch Youth Foundation Inc	2015 – Education Support	FGM Charitable Fund
Ardoch Youth Foundation Inc	Briars Camp for Aldercourt PS Yrs. 3 & 4	Alice Sloan Fund
Ardoch Youth Foundation Inc	Special Teaching Unit - Moorabbin	Holding Redlich Social Justice Fund
Ardoch Youth Foundation Inc	Frankston East Primary School Breakfast Club	Alice Sloan Fund
Aurora Education Foundation Limited	Development Manager Position	Keith & Jeannette Ince Fund
Australian Schools Plus Ltd	Croxton Special School	Slater & Gordon Community Fund
Australian Schools Plus Ltd	Thornbury High School	Dina Grollo Community Fund
Banksia Gardens Community Services	Language and Learning support program	Vanraay Family Fund
Braybrook College	Dare 2 Dream Scholarships	John Cummins Memorial Fund (Extension)
Caterina Ho	Tony Adams Fund Research in International Education Grant	Tony Adams Extension Fund
CatholicCare	Wyndham after school learning program	Homework Club Partnership Fund Extension
Centre for Policy Development Ltd	General purposes	Curlew Fund
Charles Darwin University	Tanya Davies Equity Grant	Trikojus Education Fund
Children's Protection Society	Provision of pre-school education for one refugee child	Fairness Fund
Chisholm Institute of Technical and Further Education	Koorie student bursaries	TAJS Fund
Cobden Technical School	Dare 2 Dream Scholarships	John Cummins Memorial Fund (Extension)
Community Hubs Australia	Meadows Primary Family learning program	Homework Club Partnership Fund Extension
Community Hubs Australia	Meadows Primary Family learning program	Will & Lucy Martin Fund
Deutsche Schule Melbourne Building Fund	General Purposes	Henkell Family Fund
Diplomacy Training Program Limited	Human rights work and related publications	Hart Line Fund
Disability Resources Centre Inc	Small Education Grants to Indigenous People with disabilities	Towards a Just Society Fund
Diversitat	Colac Homework Club	Homework Club Partnership Fund Extension
Diversitat	Geelong REAT Homework Club	Will & Lucy Martin Fund
Douglas Proctor	Tony Adams Fund Research in International Education Grant	Tony Adams Extension Fund
Eastern Health	Professional Development	Eastern Health Charitable Fund
Emily McKie	Sally Isaac Memorial Fund Scholarship Award	Sally Isaac Memorial Scholarship Fund
Flemington and Kensington Community Legal Centre	Melbourne Employment Forum	Assia Altman Fund
Flemington and Kensington Community Legal Centre	Melbourne Employment Forum	Ballandry (Peter Griffin Family) Fund

RECIPIENT	PROJECT	FUND
Education , Training & Employment		
Footscray City College	Dare to Dream Scholarship	John Cummins Memorial Fund (Extension)
Foundation for Rural and Regional Renewal	Daylesford Primary School: MultiLit Literacy Program	Betty Fulton Fund
Foundation for Rural and Regional Renewal	Daylesford Secondary College: School Well-Being + GRIN Program	Betty Fulton Fund
Foundation for Rural and Regional Renewal	Mansfield Primary School - Library	Mansfield Community Fund
Foundation for Rural and Regional Renewal	School Vouchers	Betty Fulton Fund
Ganbina	Jobs4U2 Program	Williams Fund
Glossop High School	Joy Mavis Schwartz-Seidler Musical Scholarship	Joy Mavis Schwartz-Seidler Musical Scholarship Fund
Graduate Women Victoria	Online Scholarship Application System	Graduate Women Victoria
Graduate Women Victoria	Scholarship Program 2016	Graduate Women Victoria Donors Fund
Graduate Women Victoria	Scholarship Program 2017	Graduate Women Victoria
Hands on Learning Australia	New Rosebud Operation	Ballandry (Peter Griffin Family) Fund
Healesville Indigenous Community Services Association	Student Bursaries	Towards a Just Society Fund
Karrkad-Kanjdi Trust	Nawarddeen Academy at Kabulwarnamyo	Digger & Shirley Martin Environment and Conservation Fund
Kids Under Cover	General Purposes	Dina Grollo Community Fund
Kinfolk Enterprises Pty Ltd	General Purposes	Miller Fund
King David School Scholarship Fund	Scholarship to assist female students in years 11 & 12 in science & mathematics	DDJE Fund
Korumburra Secondary College	Dare 2 Dream Scholarships	John Cummins Memorial Fund (Extension)
Kurunjang Secondary College	Dare 2 Dream Scholarships	John Cummins Memorial Fund (Extension)
Lakeview Senior College	Dare 2 Dream Scholarship	John Cummins Memorial Fund (Extension)
LaTrobe University	Parenthood Research Program Y4 instalment	Coronella Fund
LaTrobe University	Transition to Contemporary Parenthood Program – Year 3	Coronella Fund
Library Board of Victoria	Australian Learning Lecture	Koshland Innovation Fund
Melbourne Polytechnic (formerly NMIT)	Dare 2 Dream Scholarship	John Cummins Memorial Fund (Extension)
Monash University	Koorie Health Student Academics	Towards a Just Society Fund
Monash University	Dubsky Memorial Award	Dubsky Family Fund
New Hope Foundation Inc	Melton Multicultural Homework Club	Dennoch Fund
New Hope Foundation Inc	Melton Multicultural Homework Club	Homework Club Partnership Fund Extension
New Hope Foundation Inc	Tarneit Learning Support Program	Homework Club Partnership Fund Extension
Newcomb Secondary College	Dare 2 Dream Scholarships	John Cummins Memorial Fund (Extension)

RECIPIENT	PROJECT	FUND
Education , Training & Employment		
North Geelong Secondary College	Dare 2 Dream Scholarships	John Cummins Memorial Fund (Extension)
Northern College of Arts and Technology	Dare 2 Dream Scholarships	John Cummins Memorial Fund (Extension)
Peter Hurley	Tony Adams Fund Research in International Education Grant	Tony Adams Extension Fund
Port Phillip Specialist School	Life Kitchen	Finch Fund
Princes Hill Secondary College	Dare to Dream Scholarship	John Cummins Memorial Fund (Extension)
Raising Literacy Australia	Positive Parenting Practices	Impact 100 South Australia
Righteous Pups Australia	Bridging the Gaps	Wanless Family Fund
RMIT	Herbert and Inge Littauer Scholarship	Herbert and Inge Littauer Fund
Salvation Army Australia Eastern Territory Social Work	Pathways Program - Oasis Youth Network	Dina Grollo Community Fund
SNAICC	To fund an Aboriginal position in team	Beecher Family Charitable Fund
Social Outfit	Sales and Marketing Strategy	B B & A Miller Fund
Social Ventures Australia	School for Social Entrepreneurs	Steve Lawrence Social Innovation Fund
Stella Prize Inc Public Fund	Schools Program	Hart Line Fund
Sunshine College	Dare 2 Dream Scholarships	John Cummins Memorial Fund (Extension)
Swinburne University	First in Family Scholarships	Apollo Fund
The Australia Institute	Research that matters	Social Justice Fund
The Foundation for Young Australians	YGAP	Pomegranate Fund
The Social Studio	ESL Literacy Initiatives	Equal Access Fund
Theodosia Prodromu	Tony Adams Fund Research Project in International Education Grant	Tony Adams Extension Fund
Thornbury High School	Dare 2 Dream Scholarships	John Cummins Memorial Fund (Extension)
University College	Residential Scholarships	McGregor Family Fund
University College	Scholarship Program	Betty Fulton Fund
University College	University College Scholarships Program	Williams Fund
University of Melbourne	Supporting student participation in University clubs	Finch Fund
University of Melbourne	Believe campaign	Ballandry (Peter Griffin Family) Fund
University of New South Wales	Centre for Social Impact: Emerging Leadership Program	Steve Lawrence Social Innovation Fund
University of Technology Sydney	Sustaining Social Enterprise over the long term (Phase 2)	Steve Lawrence Social Innovation Fund
University of Western Sydney	Education research projects at the Whitlam Institute	Hart Line Fund
Volunteering of SA and NT inc	Aboriginal Volunteer Program 2016	Social Justice Fund
Weeroona College	Weeroona Additional Learning support program	Homework Club Partnership Fund Extension

RECIPIENT	PROJECT	FUND
Education , Training & Employment		
Western English Language School	Dare 2 Dream Scholarships	John Cummins Memorial Fund (Extension)
William Angliss Institute Foundation Scholarship Fund	Phyllis Budd Scholarship	Phyllis Budd Fund
World Literacy Foundation	Books for Indigenous Kids Program	B B & A Miller Fund
Writers Victoria	Hazel Rowley Literary Fellowship	Hazel Rowley Literary Fund
Yalari Ltd	Sponsorship for 2 students for the 2017 year	RO Fund
Zahra Foundation	Training Wheels	Impact 100 South Australia

RECIPIENT	PROJECT	FUND
Environment & Conservation		
Australian Conservation Foundation	Pre-Paris Peoples Climate March	B B & A Miller Fund
Australian Environment and Conservation Grantmakers Network	Strategic Support	Fairer Futures Fund
Australian Marine Conservation Society	General purposes	Curlew Fund
Australian Marine Conservation Society	Matching challenge – Great Barrier Reef	Worworing Fund
Australian Wildlife Conservancy	General Purposes	Keith & Jeannette Ince Fund
Australian Wildlife Conservancy	General purposes	Davie Family Fund
Australian Youth Climate Coalition Gift Fund	SEED	B B & A Miller Fund
Australian Youth Climate Coalition Gift Fund	Core funding – matched donor drive	Melliodora Fund
Australian Youth Climate Coalition Gift Fund	December Leadership Camp	Johnstone Gumption Fund
Australian Youth Climate Coalition Gift Fund	December Leadership Camp	Rana and Alan Fund
Australian Youth Climate Coalition Gift Fund	General purposes	Fairer Futures Fund
BERG Mount Martha	Restoring North Bank of Balcombe Creek	Sally Oatley Memorial Fund
Beyond Zero Emissions Inc	Zero Carbon Communities Program	Harner Family Fund
Bush Heritage Australia	General purposes	Geostudies Fund
Bush Heritage Australia	Nardoo Hills Reserves	Geostudies Fund
Centre for Policy Development Ltd	Launch Report the Longest Conflict	Digger & Shirley Martin Environment and Conservation Fund
Centre for Policy Development Ltd	Sustainable Economy and Climate Action	Fairer Futures Fund
Centre for Policy Development Ltd	Sustainable Economy Program	Harner Family Fund
Centre for Policy Development Ltd	Sustainable Energy Program	Digger & Shirley Martin Environment and Conservation Fund
Climate Institute (Australia) Ltd	General purposes	Annamila Fund
Climate Institute (Australia) Ltd	50 for 5 Program	Fairer Futures Fund
Climate Institute (Australia) Ltd	Catalysing the transformation – Y3	Harner Family Fund
Climate Institute (Australia) Ltd	Climate of the Nation	Harner Family Fund
Climate Institute (Australia) Ltd	Climate of the Nation Survey	Digger & Shirley Martin Environment and Conservation Fund
Climate Institute (Australia) Ltd	Core Activities in 2015; Paris Climate Agreement	Digger & Shirley Martin Environment and Conservation Fund
Climate Institute (Australia) Ltd	Divest Invest Conference Sydney	Fairer Futures Fund
EDO QLD	Acland Coal Mine Community Battle	Melliodora Fund
EDO QLD	Acland Coal Mine Community Battle	Vilde Family Fund
EDOs of Australia	Strategic Review and Analysis	Alf & Meg Steel Fund

RECIPIENT	PROJECT	FUND
Environment & Conservation		
EDOs of Australia	Strategic Review and Analysis	Johnstone Gumption Fund
EDOs of Australia	Strategic Review and Analysis	Vilde Family Fund
EDOs of Australia	Strategic Review and Analysis	Worworing Fund
Environment and Conservation Tasmania	Marine Conservation Program	Alf & Meg Steel Fund
Environment and Conservation Victoria Inc	General Purposes	Johnstone Gumption Fund
Environment and Conservation Victoria Inc	Step Up Victoria Campaign	B B & A Miller Fund
Environment and Conservation Victoria Inc	Step Up Victoria campaign	Koshland Innovation Fund
Environment and Conservation Victoria Inc	Step Up Victoria campaign	Melliodora Fund
Environment and Conservational Justice Australia	Strategic Plan Operations 2015-2016	Alf & Meg Steel Fund
Environment and Conservational Justice Australia	Strategic Plan Operations 2015-2016	B B & A Miller Fund
Environment and Conservational Justice Australia	Strategic Plan Operations 2015-2016	Fairer Futures Fund
Environment and Conservational Justice Australia	Strategic Plan Operations 2015-2016	Green Cities Innovation Fund
Environment and Conservational Justice Australia	Strategic Plan Operations 2015-2016	Hart Line Fund
Environment and Conservational Justice Australia	Strategic Plan Operations 2015-2016	Johnstone Gumption Fund
Footscray Community Arts Centre	Tipping Point Australia: Creative thinking on climate change	Hamer Family Fund
Foundation for Rural and Regional Renewal	Yass Urban Landcare Inc	Alf & Meg Steel Fund
Friends of the Earth (Victoria)	350.org Australia: Big Four Banks Campaign on Climate Change	Melliodora Fund
Friends of the Earth (Victoria)	350.Org: University Divestment Campaign	B B & A Miller Fund
Friends of the Earth (Victoria)	Public Transport Not Traffic	Running Waters Fund
GreenInstitute	Women's Environment and Conservational Leadership in Action 2016	Melliodora Fund
Infoxchange Australia	Carbon Certification Project	With One Seed
Invasive Species Council	General purposes	Curlew Fund
Jewish National Fund Environment and Conservational Association of Australia Inc	Environment and Conservational Science Centre Project	Pomegranate Fund
Kimberley Land Council	Bardi Jawi Oorany Rangers	Alf & Meg Steel Fund
Kimberley Land Council	Bardi Jawi Oorany Rangers	Fairer Futures Fund
LaTrobe University	David Jolley Leadership Award	David Jolley Leadership Award

RECIPIENT	PROJECT	FUND
Environment & Conservation		
Museums Board of Victoria	Catching the Eye - Wildlife Photography project	Worrowing Fund
Nature Conservation Council of NSW Environment and Conservation Gift Fund	Community Organising Fellowship	Digger & Shirley Martin Environment and Conservation Fund
Nature Conservation Council of NSW Environment and Conservation Gift Fund	Community Organising Fellowship	Fairer Futures Fund
Nature Conservation Council of NSW Environment and Conservation Gift Fund	Community Organising Fellowship	Hamer Family Fund
Nature Conservation Council of NSW Environment and Conservation Gift Fund	Community Organising Fellowship	Melliodora Fund
Nature Conservation Council of NSW Environment and Conservation Gift Fund	Community Organising Fellowship	Running Waters Fund
Norman Wettenhall Foundation	General purposes	Williams Fund
Norman Wettenhall Foundation	Nature Conservation Council NSW Fire management network	Melliodora Fund
Norman Wettenhall Foundation	Phascogale Nest Box analysis La Trobe University	Melliodora Fund
Norman Wettenhall Foundation	SEGS & Mt Rothwell Projects	Worrowing Fund
Port Phillip Ecocentre Incorporated	Elster Creek Sustainable Schools	Hamer Family Fund
RMIT	Implementing Sustainability in the Built Environment and Conservation	Green Cities Innovation Fund
Royal Botanic Gardens Melbourne	General Purposes (Directors Circle)	Sally Browne Fund
Solar Citizens Australia	Solar Citizens Core Funding	Melliodora Fund
The Environment and Conservation Centre NT Public Fund	Kimberley to Cape	Melliodora Fund
The Lost Dogs Home	General purposes	Henkell Family Fund
Thin Green Line Foundation	Solomon Islands Ranger Association	Global Leadership Fund
Understorey Network	Seed Collection Walks & Workshops	Glenorchy Community Fund
University of Melbourne	Student Competition: Ecological & Social Outcomes	Green Cities Innovation Fund
University of Melbourne	Running Wild	Green Cities Innovation Fund
University of Melbourne	Ecological Assessment of Castlemaine site	Green Cities Innovation Fund
Victorian National Parks Association	Habitat and biodiversity protection program	Melliodora Fund
World Wide Fund for Nature Australia	General Purposes	Sunning Hill Fund
Zoos Victoria	Saving the Eastern Barred Bandicoot	Vicki Standish Family Fund

RECIPIENT	PROJECT	FUND
Health & Medical Research		
Aboriginal Health Council of South Australia	Rising Spirits Resources	The Ripple Fund
Alzheimer's Australia Vic Inc	Dementia Education Tool	Agnes Robertson Fund
Alzheimer's Australia Vic Inc	General Purposes	Hopetoun Fund
Anti Cancer Council of Victoria (Cancer Council Victoria)	Venture Grants Scheme 2016	Balandry (Peter Griffin Family) Fund
Arthritis Victoria	Living Well with Arthritis	Hopetoun Fund
Asbestos Diseases Society of Australia Inc	Mesothelioma nurse training	Slater & Gordon Asbestos Research Fund
Ashleigh Cusack	Goulburn Valley Medical Workforce Scholarship	Goulburn Valley Medical Workforce Fund
Austin Health	Brain Tumor Support Service	John Cummins Memorial Fund (Extension)
Austin Health	Catastrophic traumatic injuries research (Bridget Hill)	Slater & Gordon Health Projects and Research Fund
Australia 21	Empathy Conversation Project	Social Justice Fund
Australian Leukodystrophy Support Group Inc	Family Advocacy Program	Slater & Gordon Community Fund
Breast Cancer Network Australia	My Journey Kits; My Care Kits	New Idea Charitable Fund
Breast Cancer Network Australia	Secondary Breast Cancer Telephone Support	New Idea Charitable Fund FUND
Burnet Institute	General Purposes	Hopetoun Fund
Cabrini Health	General Purposes	Hopetoun Fund
Cancer Council Western Australia	Travel keynote speakers Annual Symposium	Slater & Gordon Asbestos Research Fund
CanTeen	General Support	Henkell Family Fund
CareFlight	Acquisition of 2 Night Vision Goggle Components	Wanless Family Fund
Central West Brain Injury Action Group Inc	Neurocognitive rehab training (Denise Young)	Slater & Gordon Health Projects and Research Fund
Cerebral Palsy Alliance	General Purposes	Geostudies Fund
Christian Nsombo	Goulburn Valley Medical Workforce Scholarship	Goulburn Valley Medical Workforce Fund
Emily Roe	Goulburn Valley Medical Workforce Scholarship	Goulburn Valley Medical Workforce Fund
Fight Cancer Foundation	Education Support Program into Adelaide's Women & Children's Hospital	Slater & Gordon Community Fund
Florey Institute of Neuroscience and Mental Health	Screening Tool for Asylum Seeker Mental Health (STAMH)	B B & A Miller Fund
Florey Institute of Neuroscience and Mental Health	General purposes	Ralph & Betty Sims Fund
Gallipoli Medical Research Foundation	Liver Cancer Research	Kinder Charitable Fund
Gallipoli Medical Research Foundation	Nano drop Machine	Kinder Charitable Fund
Homeless Healthcare (formerly Mobile GP)	Mobile GP - Impact WA	Impact 100 WA

RECIPIENT	PROJECT	FUND
Health & Medical Research		
Hudson Institute	The 3rd Collaborative Paediatric Cancer Research Day	Isabella and Marcus Paediatric Brainstem Tumour Fund
Institute of Respiratory Health	Advanced training fellowship in Interventional Pulmonology (Rajesh Thomas)	Slater & Gordon Health Projects and Research Fund
Institute of Respiratory Health	Travel to World Conference on Lung Cancer (Dr Fraser Brims)	Slater & Gordon Health Projects and Research Fund
James Lelliott	Goulburn Valley Medical Workforce Scholarship	Goulburn Valley Medical Workforce Fund
Juvenile Diabetes Research Foundation	General Research	Wendy Mead Fund
McGrath Foundation Limited	General purposes	Williams Fund
MECWA Community Care	General Purposes	Hopetoun Fund
MIND Australia	Turnip 'N' Throw	Hobsons Bay Community Fund
Mithma Ekanayake	Goulburn Valley Medical Workforce Scholarship	Goulburn Valley Medical Workforce Fund
Motor Neurone Disease Assoc of QLD Incorporated	Equipment to prevent pressure ulcers in MND patients	Slater & Gordon Community Fund
Murdoch Childrens Research Institute	Genetic Conditions Program	N E Renton Bequest
National Breast Cancer Foundation	General Purposes	Finch Fund
National Institute of Integrative Medicine Ltd	General Purposes	Sally Browne Fund
National Stroke Foundation	General Purposes	Hopetoun Fund
O'Brien Foundation	General Purposes	Sally Browne Fund
Odyssey House Victoria	General Purposes	Hopetoun Fund
Olivia Newton-John Cancer Research Institute	Mesothelioma (Dr Thomas John)	Slater & Gordon Health Projects and Research Fund
Pelvic Pain Foundation of Australia Limited	General Purposes	Henkell Family Fund
Peter MacCallum Cancer Institute	General Purposes	Beecher Family Charitable Fund
Peter MacCallum Cancer Institute	General Support	Finch Fund
Peter MacCallum Cancer Institute	General Support	Hopetoun Fund
Ronald McDonald House Orange	A home is where the heart is	Wanless Family Fund
Roxanne Daldy	Goulburn Valley Medical Workforce Scholarship	Goulburn Valley Medical Workforce Fund
Royal Children's Hospital	General Support	Henkell Family Fund
Royal Flying Doctor Service of Australia	General Purposes	Hopetoun Fund
Royal Flying Doctor Service of Australia	Royal Flying Doctor Service	Sally Browne Fund
Royal Society for the Blind of South Australia Inc	Supporting Vision Loss Clinic	Slater & Gordon Community Fund
Royal Women's Hospital Brisbane	Yoga classes for Adolescent Mental Health	Wanless Family Fund

RECIPIENT	PROJECT	FUND
Health & Medical Research		
Ruby Botterill	Goulburn Valley Medical Workforce Scholarship	Goulburn Valley Medical Workforce Fund
Sane Australia	SANE Psychosis Research Grant	Sally Oatley Memorial Fund
Spinal Cord Injuries Australia	Walk on Perth	Slater & Gordon Community Fund
Steele Fairless	Goulburn Valley Medical Workforce Scholarship	Goulburn Valley Medical Workforce Fund
Sumudu Fernando	Goulburn Valley Medical Workforce Scholarship	Goulburn Valley Medical Workforce Fund
Syndromes without a Name (S.W.A.N) Australia	General purposes	N E Renton Family Fund
The Alfred Hospital	Accommodation for families of heart transplant patients; and support for Leukaemia Unit	Wanless Family Fund
The Alfred Hospital	Cardiac Day Procedural Chairs	Agnes Robertson Fund
The Asbestos Diseases Research Foundation	Circular RNAs (Dr Ruby Lin)	Slater & Gordon Health Projects and Research Fund
The Asbestos Diseases Research Foundation	Mesothelioma support	Slater & Gordon Health Projects and Research Fund
The Asbestos Diseases Research Foundation	Travel expenses Dr Glen Reid	Slater & Gordon Asbestos Research Fund
The Children's Hospital at Westmead	Outcomes of children with brain injuries resulting from non-accidental injuries (Karen Burton)	Slater & Gordon Health Projects and Research Fund
The Haven Foundation	Haven Geelong	Ralph & Betty Sims Fund
Thoracic Society of Australia and New Zealand	Occupational and Environment and Conservational Lung Disease Course	Slater & Gordon Asbestos Research Fund
University of Melbourne	Principal Fellow Paediatric Social Work (year 4)	Anonymous
University of New South Wales	hD Scholarship - Children's Cancer Research	Miette Skiller Scholarship Fund
University of Sydney	Brain Cancer Biobanking Australia	Isabella and Marcus Paediatric Brainstem Tumour Fund
University of Sydney	Cytokine analysis	Slater & Gordon Asbestos Research Fund
Very Special Kids	General Support	Henkell Family Fund
Very Special Kids	General Support	Hopetoun Fund
Vision Australia	General Purposes	Hopetoun Fund
Weenthunga Health Network Inc	Bursary Program	Towards a Just Society Fund
Weenthunga Health Network Inc	Capacity development 2016	Fairer Futures Fund
Weenthunga Health Network Inc	Capacity Development 2016	Nicholas R Taylor Fund
Weenthunga Health Network Inc	Capacity development 2016	Sunning Hill Fund
Weenthunga Health Network Inc	Capacity development 2016	Towards a Just Society Fund
Western Chances	General purposes	DDJE Fund

RECIPIENT	PROJECT	FUND
Overseas Aid & Development		
APHEDA Overseas Project Fund	Karen Women Organisation: Special Education Project	Clare Murphy Fund
APHEDA Overseas Project Fund	KWO Nursery	Clare Murphy Fund
Australia for UNHCR	Refugee Crisis Europe Appeal	Paterson Family Fund
Australia for UNHCR	General Purposes	The Ripple Fund
Australian Climate Coolers T/A 1 Million Women	Capacity Building	Worworing Fund
Australian Foundation for Peoples of Asia and the Pacific	Blue Dragon Children's Foundation	Jamie Thornton Fund
Australian Marist Solidarity	Uai-Lili Carpentry Training Project	Espero Fund
Australian Red Cross Society	Syrian Refugee Appeal	Geostudies Fund
Cambodian Children's Fund	General Purposes	Miller Fund
Creative Partnerships Australia	Teaching aid re: On the banks of the Tigris	Dennoch Fund
Disaster Aid Australia	Family Survival Kit	Jared Dunscombe Fund
Global Development Group	Singing Kites	Davie Family Fund
Himalayan Development Foundation Australia	Ghunsu School and children's hostel project	Miller Fund
Human Rights Watch Australia	General Purposes	Hart Line Fund
Indigenous Education Foundation	Social Impact Film, As Worlds Divide	Beecher Family Charitable Fund
International Detention Coalition	Regional Solutions in Australia and the Asia Pacific	Social Justice Fund
International Fund for Animal Welfare	General purposes	Moodie Family Fund
International Fund for Animal Welfare	Zambia Elephant Orphanage Project	The Ripple Fund
John Fawcett Foundation	Bali Clinic - Coordinator position	Clare Murphy Fund
John Fawcett Foundation	Sight restoring cataract operations for low income people in Indonesia	Social Justice Fund
Joseph Burro	Tony Adams Fund Professional Development in International Education Grant	Tony Adams Extension Fund
Lung Foundation Australia	Travel Expenses International Mesothelioma Conference UK	Slater & Gordon Asbestos Research Fund
Medecins Sans Frontieres Australia	General purposes	Clare Murphy Fund
Medecins Sans Frontieres Australia	General Purposes	Grigg Family Fund
Medecins Sans Frontieres Australia	General Purposes	The Ripple Fund
Medecins Sans Frontieres Australia	Syria	B B & A Miller Fund
Motivation Australia	Women with Disability and Development – TIGRAY	The Ripple Fund
One Disease LTD	Healthy Skin Screenings in Birritjimi	Jared Dunscombe Fund
Opportunity International Australia Limited	Expand traditional microfinance model and programs Indonesia	Dumbarton Fund
Orangutan Project	General Purposes	The Ripple Fund
Orangutan Project	Thirty Hills Project Indonesia	Allaway Lancashire Fund

RECIPIENT	PROJECT	FUND
Overseas Aid & Development		
Rotary Australia Overseas Aid Fund	Balibo House Trust Capacity Support	Dorrie Alcock Memorial Fund
Rotary Australia Overseas Aid Fund	Afghanistan Project (55-2012-13)	Tan Family Fund
Rotary Australia Overseas Aid Fund	Bahay Tuluyan	Clare Murphy Fund
Rotary Australia Overseas Aid Fund	Project No 16-2014-15; LHA Education and Development	John and Eileen Clark Family Fund
South East Community Links	Sangpool Scholarship Fund	Macmar Fund
Tabitha Foundation Australia	General Purposes	Dumbarton Fund
Tear Australia	Cyclone Pam Disaster Recovery: Vanuatu	Wanless Family Fund
Tear Australia	Nepal Earthquake Appeal 2015	Wanless Family Fund
The Asbestos Diseases Research Foundation	Travel support	Slater & Gordon Health Projects and Research Fund
The Australia Cambodia Foundation Inc.	Sunrise Children's Villages	Dorrie Alcock Memorial Fund
The Hunger Project	Unleashed Women Leaders Initiative	Social Justice Fund
The Trustee for the Room to Read Foundation	Nepal Education Fund	Carreker Community Fund
The Trustee for World Relief Overseas Aid Fund	Australia Pacific Islands Disability Support	DISCAL Fund
Trustees of Marist Fathers for the province of Australia	Educational Program Ranong Thailand	Greg Larsen Family Fund
Trustees of Marist Fathers for the province of Australia	Ranong Mission for Educational Purposes	Greg Larsen Family Fund
UNICEF Australia	General Purposes	Dorrie Alcock Memorial Fund
UNICEF Australia	General Purposes	The Ripple Fund
World Vision Australia	PNG Education	Clare Murphy Fund
World Vision Australia	Solomon Islands Maternal Child Health	Clare Murphy Fund

RECIPIENT	PROJECT	FUND
Social Justice, Human Rights & Inequality		
Alliance for Gambling Reform	Campaign Media Strategy	Social Justice Fund
Alliance for Gambling Reform	Pokies Play You	Alf & Meg Steel Fund
Alliance for Gambling Reform	Pokies Play You	Beecher Family Charitable Fund
Alliance for Gambling Reform	Pokies Play You	Clack Family Memorial Fund
Alliance for Gambling Reform	Pokies Play You	Fairer Futures Fund
Alliance for Gambling Reform	Pokies Play You	Hart Line Fund
Alliance for Gambling Reform	Pokies Play You	Orni-Albers Fund
Alliance for Gambling Reform	Pokies Play You Campaign	Sally Oatley Memorial Fund
Asylum Seekers Centre Inc	Foundations Research	B B & A Miller Fund
Asylum Seekers Centre Inc	Foundations Research	Espero Fund
Asylum Seekers Resource Centre	General purposes	Williams Fund
Australian Council of Social Services	Poverty in Australia Reports	Social Justice Fund
Brotherhood of St Laurence	Reconciliation Victoria / Agreements and Treaties Dialogue	Alf & Meg Steel Fund
Brotherhood of St Laurence	Reconciliation Victoria / Agreements and Treaties Dialogue	B B & A Miller Fund
Brotherhood of St Laurence	Woor-Dungin: Operations Manager Position	Alf & Meg Steel Fund
Brotherhood of St Laurence	Woor-Dungin: Operations Manager Position	B B & A Miller Fund
Brotherhood of St Laurence	Woor-Dungin: Operations Manager Position	Fairer Futures Fund
Brotherhood of St Laurence	Woor-Dungin: Operations Manager Position	Sunning Hill Fund
Brotherhood of St Laurence	Woor-Dungin: Operations Manager Position	Towards a Just Society Fund
Brotherhood of St Laurence	Woor-Dungin: Operations Manager Position	Williams Fund
Documentary Australia Foundation	A Leg to Stand On	Wanless Family Fund
Flemington and Kensington Community Legal Centre	Police Racial Profiling	Beecher Family Charitable Fund
Flemington and Kensington Community Legal Centre	Police Racial Profiling	Hart Line Fund
Flemington and Kensington Community Legal Centre	Police Racial Profiling	Orni-Albers Fund
FVPLS Victoria	Fundraiser Position	B B & A Miller Fund
FVPLS Victoria	Fundraiser Position	Towards a Just Society Fund
FVPLS Victoria	General Purposes	The Ripple Fund
Gambling Impact Society NSW	Alliance for Gambling Reform	Forward Fund
Gambling Impact Society NSW	Alliance for Gambling Reform Campaign	Hart Line Fund
Human Rights Law Centre	General Purposes	Williams Fund
Human Rights Law Centre	General purposes	Ballandry (Peter Griffin Family) Fund
Human Rights Law Centre	General purposes	Sunning Hill Fund

RECIPIENT	PROJECT	FUND
Social Justice, Human Rights & Inequality		
Human Rights Law Centre	General Purposes	The Ripple Fund
Human Rights Law Centre	Indigenous Rights Unit	Assia Altman Fund
Human Rights Law Centre	Indigenous Rights Unit	B B & A Miller Fund
Human Rights Law Centre	Indigenous Rights Unit	Beecher Family Charitable Fund
Human Rights Law Centre	Indigenous Rights Unit	Hart Line Fund
Human Rights Law Centre	Indigenous Rights Unit	Orni-Albers Fund
Human Rights Law Centre	Indigenous Rights Unit	Sunning Hill Fund
Human Rights Law Centre	Refugee Rights Unit – Y2	Assia Altman Fund
Human Rights Law Centre	Refugee Rights Unit – Y2	Beecher Family Charitable Fund
Human Rights Law Centre	Refugee Rights Unit – Y2	Espero Fund
Human Rights Law Centre	Refugee Rights Unit – Y2	Fairness Fund
Human Rights Watch Australia	Capacity Building	Beecher Family Charitable Fund
Human Rights Watch Australia	General Purposes	Beecher Family Charitable Fund
Human Rights Watch Australia	General Purposes	Hart Line Fund
Independence Australia (Paragard Victoria)	General Purposes	Ralph & Betty Sims Fund
International Detention Coalition	End Child Detention Coalition	Ballandry (Peter Griffin Family) Fund
International Detention Coalition	General purposes	Williams Fund
Jobs Australia Limited	Inequality in Australia Report series	Social Justice Fund
Kapululangu Aboriginal Women's Association	General Purposes	The Ripple Fund
Kids Own Publishing	Book Launch The Ibis	B B & A Miller Fund
Kids Own Publishing	Book Launch The Ibis	Beecher Family Charitable Fund
Kids Own Publishing	Book Launch The Ibis	Johnstone Gumption Fund
Kids Own Publishing	Book Launch The Ibis	Scarlet's Fund
Per Capita Australia Limited	Economics Fellowship	Hart Line Fund
Per Capita Australia Limited	Economics Fellowship	Social Justice Fund
Per Capita Australia Limited	Per Capita Tax Survey	Social Justice Fund
Reconciliation Australia LTD	Australian Indigenous Governance Institute	Annamila Fund
Refugee and Immigration Legal Centre	General Purposes	Orni-Albers Fund
Refugee Council of Australia	General purposes	Sunning Hill Fund
The Australia Institute	Research Fund	Fairer Futures Fund
The Big Issue	Support ongoing employment of women	Dina Grollo Community Fund
The River Nile Learning Centre	Swim project – refugee and asylum seeker	Sally Oatley Memorial Fund
University of Melbourne	LGB Homelessness Project	Assia Altman Fund
Young Women's Christian Association-Australia	Fair Agenda: Combatting discrimination through responsible media	Orni-Albers Fund

SUB-FUNDS

FUND	SPECIAL INTEREST
A Peace of the Pie	Arts & Culture, Health & medical research, Environment & conservation.
Abbotsford Convent Fund	Arts, cultural and charitable purposes
Abercromby's Charitable Fund	Community services & support, health & medical research.
Aboriginal Student Bursaries Fund	Indigenous student bursaries.
Agnes Robertson Fund	Aged care, medical research, the arts and education.
Alf & Meg Steel Fund	Health and medical related causes, especially for the aged. Children both in Australia and overseas, gardening, the environment and Indigenous Australians.
Alice Sloan Fund	To provide financial and in-kind support as well as encouragement to enable young people to participate in varied pursuits, including sport, dance, music, art and outdoor education.
Alison Patrick Memorial Fund	To support graduate historical research in the broad area of French revolutionary history and also projects which focus on environmental issues.
Allaway Lancashire Fund	Support for social justice, ethical and environmental education and protection of cultural and natural heritage.
AMCS Charitable Fund & Extension Fund	Australian Multicultural Community Services (AMCS) is a not for profit organisation providing help at home and other support services to older people, people with disabilities and their carers in Melbourne and Greater Geelong.
Anna Wearne Fund	To create opportunities for young people to reach their potential, where such potential is hampered due to disadvantage. The objectives of the sub-fund concern education, indigenous people, leadership and women's rights.
Annamila Fund	General charitable purposes.
Antoinette and John Richardson Memorial Fund	Specific organisations, including Swinburne University, Victorian College of the Arts and St Francis Choir.
Apollo Fund	Education and profound hearing loss
APT Conservation and Charitable Fund	To support processes, events and activities that resolve problems to make a positive and measurable difference to selected causes.
Ardoch Future Fund	Making education a reality for young people, including those experiencing homelessness and disadvantage.
Ashworth Family Fund	Medical research
Assia Altman Fund	International development, animal welfare and protection and social entrepreneurship.
Australian Childrens Education Fund	Children's education.
Australian Disability and Indigenous Peoples' Education Fund (ADIPEF)	To support opportunities for lifelong learning for people with disabilities from Indigenous and non-indigenous backgrounds, from pre-primary to post tertiary.
Australian Indigenous Persons Initiatives Fund	Indigenous issues.
Australian Learning Lecture	The Koshland Innovation Fund supports initiatives to contribute to learning, democracy, and ideas.
Avalon Circle	Mental illness, disability (intellectual, physical, sensory), homelessness, drug and alcohol dependency and victims of abuse.
B B & A Miller Fund	Aboriginal education and health, disability, education, environment, medical research, mental health, youth suicide, drugs and addictions, disadvantage, developing countries and humanitarian crises.
Baird Family Fund	Meeting the needs of the intellectually disabled and their families.
Baker Watson Fund	Sane Australia, Guide Dogs and homelessness
Ballandry (Peter Griffin Family) Fund	General charitable purposes.

FUND	SPECIAL INTEREST
Beecher Family Charitable Fund	General charitable purposes.
Bell Family Fund	Social justice, animal welfare and medical research.
Betty Fulton Fund	To assist families and individuals to pursue educational opportunities that they may not have had the chance to because of disadvantage. This may include primary, secondary, tertiary and vocational education.
Beyond Me	To support young people to make a difference for others in the community.
BFG Charitable Account	General charitable purposes including the advancement of disadvantaged individuals and communities.
Breacan Fund	General charitable purposes.
Bridging Opportunities	General charitable purposes, with a particular passion for projects that work with, support and empower asylum seekers, refugees and women.
Carreker Community Fund	General charitable purposes.
Charles D'Aprano Award Fund	To provide funding for an annual scholarship awarded through Swinburne University of Technology to a student who wishes to extend and further their Italian related studies in Italy.
Charles David Fund	Social equity and holocaust studies.
Chaskett Fund	Support for rare book purchases for Melbourne libraries, especially the State Library of Victoria and support for bibliographical scholarship.
Cherie Millar Education Fund	Education, the arts and health in the LaTrobe Valley region
Clack Family Memorial Fund	General charitable purposes in particular to fund innovative programs in media and the arts.
Clare Murphy Fund	General charitable purposes.
Clemenger Staff Fund	Each state office has a different focus for grantmaking, from young people at risk to literacy and capacity development.
Connie & Craig Kimberley Fund	General charitable purposes.
Coronella Fund	Parent education, refugees, Indigenous education, environment and Bill of Rights (policy).
Curlew Fund	Conservation and indigenous conservation issues.
Dahkota Fund	General charitable purposes.
Dara Fund No. 2	General charitable purposes.
David Boykett Tall Ships Voyaging Fund	To develop life and leadership skills for Australian youth through the experience of voyages on tall ships.
David Jolley Leadership Award	To acknowledge and promote excellence and leadership in human services with a focus on tertiary social work education at La Trobe University across metropolitan and regional Victoria.
Davie Family Fund	Arts & Culture, Education, Training & employment, Disability, Environment & conservation.
DDJE Fund	General charitable purpose with interest in education.
Dennoch Fund	To empower people to achieve things they otherwise couldn't, primarily through support for social enterprises which provide training/ employment / business skills and opportunities to disadvantaged people as a means of building their independence and self
Digger & Shirley Martin Environment Fund	The environment and conservation.
Dina Grollo Community Fund	Youth education, employment and homelessness in the areas in which Grocon works.
DISCAL Fund	Disability and community advocacy.
Dominic Gianni Fund	To enhance the lives of children with a disability.
Dorrie Alcock Memorial Fund	The fund is committed to the welfare and education of young children around the world, especially those who are disadvantaged by the effects of conflict and systemic poverty.
Dubsky Family Fund	Overseas aid, disadvantaged youth, education, the elderly and the arts

FUND	SPECIAL INTEREST
Dumbarton Fund	Micro credit, water projects in developing countries, education for girls in Australia, housing and homelessness services.
Durrabool Fund	General charitable purposes.
Eastern Health Charitable Fund	General charitable purposes with particular emphasis on the alcohol & drug sector.
EastWeb Fund & Extension Fund	Combating disadvantage and building community capacity amongst Victoria's Indigenous, asylum seeker and refugee communities.
Elizabeth Eggelston Fund	Aboriginal law issues.
Enviro Warriors	Environmental projects and education within Australia and in developing countries. Projects focusing on indigenous cultures and their ecological knowledge.
Equal Access Fund	General charitable purposes, in particular improving literacy for Australians as a means of addressing systemic and intergenerational disadvantage.
Espero Fund	To improve society in a small way by supporting a number of charitable causes, in particular programs which focus of community advocacy, overseas development, improving educational opportunities and medical research.
Fairer Futures Fund	Indigenous affairs, disadvantaged women's development in Australia and overseas, environment, education and a good start for disadvantaged groups.
Fairness Fund	Projects supporting education and employment, particularly for indigenous youth and women.
Family Life Futures for Children Fund	To support Family Life programs and activities.
Fellowship for Indigenous Leadership Fund	Indigenous leadership and associated areas.
FGM Charitable Fund	General charitable purposes.
Fiona Shields Fund	Community services & welfare, Community development & advocacy, Environment & conservation, Overseas aid & development Targeting Children/young people, women, indigenous, refugees & asylum seekers
Geddes Nairn Development Fund	Capacity building for development partnerships in China, microfinance capacity building, refugee support especially in Australia, Oxfam Australia projects, especially in relation to China.
Geostudies Fund	General charitable purposes, with interest in the environment.
Gerard Patrick Lonergan Scholarship Fund	General charitable purposes.
Glenorchy Community Fund	Projects/programs that support the Tasmanian community of Glenorchy.
Global Gardens of Peace	To support the vision of Global Gardens of Peace to create peaceful, safe and serene environments where children and their families can come together to play, rest, heal and interact.
Global Leadership Fund & Extension Fund	To develop leadership within communities.
Goulburn Valley Medical Workforce Fund	Health scholarships in the Goulburn Valley area.
Graduate Women Victoria Donors Fund & Extension Fund	Scholarship fund for women in tertiary education in Victoria and scholarships for women undertaking masters and doctoral studies.
Green Cities Innovation Fund	Environment & sustainable living.
Greg Larsen Family Fund	Education to the disadvantaged in overseas countries and homelessness in Melbourne.
Grieve Family Fund	Social justice, especially with children, and environmental issues.
Grigg Family Fund	Education, health, the environment and social justice, with a focus on homeless people, refugees, Indigenous Australians, women and families.
Grummitt Family Fund	Cancer, heart disease, aged care and health facilities. Community causes, education facilities and a special interest in needs within the Goulburn Valley.
Guddaa Fund	General charitable purposes.
Hamer Family Fund	Focus on the performing arts, especially music, innovation in care for the environment, opportunities for talented young people and projects that forward good government in Australia.
Hart Line Fund	General charitable purposes, principally in the areas of education, the arts and the environment.

FUND	SPECIAL INTEREST
Hazel Rowley Literary Fund	Biographers, writers, lectures / presenters on writing experiences.
Heather Watkins Memorial Fund	To assist families, especially those with young and teenage children, affected by suicide. In particular, support for the Jesuit Social Services Support after Suicide program.
Henkell Family Fund & Henkell Family Fund 2	The vocal arts, in particular opera, as well as supporting the German-Australian community.
Henry Stein Fund	Projects which increase access to and participation in the community by adults with autism, intellectual or profound disabilities. Priority given to women, Indigenous people and those from a culturally and linguistic diverse background.
Herbert and Inge Littauer Fund	Refugees, aged care, language and resettlement projects, health and cancer research and support, innovation and entrepreneurship, theatre, arts and music, Jewish community support and language and learning.
Hilary Dixon and John Dempster	General charitable purposes.
Hobsons Bay Community Fund & Extension Fund	General charitable purposes within Hobson's Bay municipality.
Holding Redlich Social Justice Fund	To promote social justice in the community, with a focus on assisting disadvantaged young people with education, training, employment and health.
Homework Club Partnership Fund & Extension Fund	Partnership opportunity to improve education outcomes for migrant and refugee young people.
Hopetoun Fund	General charitable purposes.
Howard McGeary Charitable Fund	Support for adults and children with physical and intellectual disabilities; the homeless and disadvantaged in the community. Care and protection of the environment/conservation and animals.
Howard Nathan Fund	Jewish culture & education and homelessness.
Humphries Family Fund	General charitable purposes.
Impact 100 South Australia	General charitable purposes.
Impact 100 WA	To make high impact grants to charitable causes in WA.
Initiate Action Community Fund & Extension Fund	Education, girls and women in Melbourne's western suburbs.
Isabella and Marcus Paediatric Brainstem Tumour Fund	Research into paediatric brainstem tumours with a focus on Diffuse Intrinsic Pontine Glioma
James Family Fund	Early childhood, youth at risk, homelessness, international poverty and aid.
Jared Dunscombe Fund	General charitable purposes.
Jean Vincent Fund	Fund not currently distributing.
Joan & David Harper McLennan Fund & Extension Fund	Social justice.
John and Eileen Clark Family Fund	General charitable purposes.
John Cummins Memorial Fund & Extension Fund	Support for brain tumour patients linked to Austin Hospital and educational opportunities for young people experiencing disadvantage in Melbourne's northern suburbs.
Johnstone Gumption Fund	Environment, open spaces, regional botanical gardens. Projects that support citizenship and community. Health and quality outcomes for patients.
Joy Mavis Schwartz-Seidler Musical Scholarship	Musical scholarship to students from Glossop High School in South Australia who have 1-2 year formal training and show musical growth potential.
Juliet Allen Fund	Projects that support women and children through health and education, sustain the environment or prevent international poverty or ill-health.
June Shenfield Poetry Award Fund	An annual award to commemorate June Shenfield, designed to encourage Swinburne University students to write and become interested in publishing and reading poetry.
Juno Fund	General charitable purposes.

FUND	SPECIAL INTEREST
Katrina's Sparkle Fund	Safety and wellbeing of children and babies, social justice and fairness, family harmony and cohesion, educational opportunities for young people to maximise their potential especially through travel, and health issues.
Keith & Jeannette Ince Fund	Environment and threatened species, education for disadvantaged children, assisting indigenous communities and early childhood development.
Kinder Charitable Fund	General charitable purposes.
Kirkham Family Fund	Music and theatre, with emphasis on young artists and small theatre companies, and the environment and animal welfare.
Kokopelli Knights Fund	To bring joy to children with life threatening diseases who need inspiration and happiness.
Koshland Innovation Fund	The Koshland Innovation Fund supports initiatives to contribute to learning, democracy, and ideas.
Kristian Fredrikson Scholarship	Scholarship to support career development for arts/theatrical design makers.
Leosia	To support grassroots and holistic Indigenous organisations that focus on empowerment and self-determination. The sub-fund aims to support programs that provide meaningful and sustainable training, education and employment pathways for Indigenous peoples.
M & L Attwood Fund	Support for organisations in the Goulburn Valley area extending to rural areas throughout the State. This includes organisations involved in mental health, disability, disadvantaged young people, environment, Aboriginal health and education and arts.
Macmar Fund	Supporting primary school education opportunities
Malcolm Broomhead	General charitable purposes.
Mansfield Community Fund	To support environmental integrity.
Mary Perrottet Fund	General charitable purposes.
Maude Hargrave Fund	Community services and welfare, Health and medical research.
Mayer Morris Family Fund	Aboriginal Australians, refugees living in Australia and residents of Timor Leste.
McGregor Family Fund	General charitable purposes with an emphasis on education for the disadvantaged.
Melanie Holden Memorial Sub Fund	To financially assist a young cancer sufferer's attendance at the Gawler Foundation.
Melliodora Fund	Ecological sustainability, environmental advocacy and nature conservation.
Metta Fund	General charitable purposes.
Miette Skiller Scholarship Fund	Research into paediatric brainstem tumours with a focus on Diffuse Intrinsic Pontine Glioma
Miller Fund	General charitable purposes.
Mutual Trust Team Charitable Fund	General charitable purposes.
N E Renton Family Fund & Bequest	Children with mental health issues.
Nash Family Fund	General charitable purposes.
New Idea Charitable Fund	Community support for women with breast cancer and research into causes and cures.
Nicholas R Taylor Fund	Environment and conservation, Community development, indigenous education, disability.
Omi-Albers Fund	Refugees, children and youth, social change and human rights.
P J & J P Murphy Fund	General charitable purposes.
P&B Hyams	Disability with particular focus children with a disability and their families, refugees & asylum seekers.
Palliative Care Victoria	To benefit palliative care in Victoria.
Paterson Family Fund	Assistance to small groups without a voice, particularly people with disabilities.
Phyllis Budd Fund	Support for a second and third year apprentice chefs who might be disadvantaged through financial or family circumstances.
Pine Grove	Disability, in particular hearing impaired.

FUND	SPECIAL INTEREST
Pitcher Partners Charitable Fund	General charitable purposes.
Pomegranate Fund	Health, education and community development.
Quercus Fund	To support a variety of community initiatives.
Quinten Curry Tribute	General charitable purposes.
Raettvisa Fund	General charitable purposes.
Ralph & Betty Sims Fund	To support a range of charitable organisations.
Rana and Alan Fund	Overseas aid, especially in helping communities become self sufficient. The environment, Indigenous programs, refugees, health and human rights.
Renner Family Fund	General charitable purposes.
Ridgeway Fund	Overseas aid & development, Women and girls, Community support
Rod and Pamela Wells Community Fund	General charitable purposes.
Ron Castan Education Fund	Aboriginal law issues.
Ronald and Mary Henderson Fund	Socio-economic research to tackle poverty Australia wide, particularly in Melbourne and rural areas. Refugee and asylum seekers, settlement issues and support, social inclusion, co funding and partnerships with other funders.
Running Waters Fund	Urban ecological sustainability, social justice and nature conservation, particularly through advocacy and community development.
Sally Browne Fund	Melbourne's Royal Botanic Gardens, the School of Botany at Melbourne University and motor neurone disease.
Sally Isaac Memorial Scholarship Fund	To create educational opportunities for young women aged 35 or younger who make a significant contribution to the community in fields of local government, social justice, aboriginal affairs (including reconciliation) arts and music, community health, CALD
Sally Oatley Memorial Fund	To support initiatives in charitable areas, in mental health services, research, education and training, with emphasis on young people and families.
Scarlet's Fund	Creative projects in developing communities, focussing on children and young people
Semaphore Fund	General charitable purposes.
Sharman Mitzvah Fund	Education.
Silver Gold Fund	General charitable purposes, in particular education and the combating of disadvantage.
Slater & Gordon Asbestos Research Fund	To fund and support medical research to find a cure for asbestos related disease, particularly mesothelioma. To support the sharing of information amongst health professionals with respect to the prevention, treatment of asbestos related diseases.
Slater & Gordon Community Fund	General charitable purposes, to include social research, advocacy for disenfranchised persons with an emphasis on social justice.
Slater & Gordon Health Projects and Research Fund	Health & medical research, Disability
Social Justice Fund	To contribute to the promotion of social and economic justice in Australia and in the developing countries of Africa, Asia, Latin America and the Pacific.
Spend It Well Fund	Projects in East Timor such as building schools to assist rebuild the nation's education infrastructure.
St Mark's Anglican Church Fitzroy Choral Scholarship Fund	To encourage and support the practice, performance and development of sacred choral music at St Marks Anglican Church, Fitzroy, through the granting of one or more annual scholarships for St Mark's Anglican Church Fitzroy Choral Scholars.
Steve Lawrence Social Innovation Fund & Extension Fund	To support the creation of new services in Australia that enable citizens and organisations to better solve social problems.
Story Street Fund	Support for international education and basic health, Melbourne refugee organisations and human rights/public law organisations.
Strike a Light Fund	General charitable purposes.
Stubbs and White Charitable Fund	MS, Cerebral Palsy, Disadvantaged in Melbourne CBD

FUND	SPECIAL INTEREST
Sunning Hill Fund	To enhance education and training opportunities for Aboriginal people in the Northern Territory and Kimberley.
Sunshine and Crocodile Fund	General charitable purposes but with particular interest in indigenous communities and capacity building projects in Sri Lanka
Sylvia Fisher Fund	An extended study bursary awarded to a singer for professional development.
Tan Family Fund	Aboriginal issues and advocacy.
The Andrew Plain Memorial Fund	General charitable purposes.
The Clements Fund	To support the Gawler Foundation's "Life for Living" program and the renal cell carcinoma research program at the Austin Hospital.
The Ripple Fund	Arts & Culture, Community services & welfare, health & medical research, Community development & advocacy, Environment & conservation, Overseas aid & development
The Robison Fund	Charitable purposes and in particular education and combating disadvantage. May include the provision of music programs for the disadvantaged in schools or the general community.
The TAP Fund	Education, training and employment, Disability
Thu Giang Nguyen Fund	An annual science prize to a student at Melbourne Girls College and a scholarship to an indigenous student in the Goulburn Valley.
Together We Learn	Education, training and employment and community development for indigenous, disadvantaged and those experiencing rural isolation.
Tony Adams Extension Fund	To continue the work of Professor Tony Adams in international education by supporting activities in the areas of research, professional development and student mobility.
Towards a Just Society Fund & Extension Fund	Parent education, refugees, Indigenous education, environment and Bill of Rights (policy).
Trikofus Education Fund	Scholarships to disadvantaged & gifted children in government schools.
Unico Community Fund	Support for social and community disadvantage, the environment and the arts.
Vandm	Education, training & employment.
Vanraay Family Fund	Social justice and equality, by working towards equal distribution of resources for people across society. Empowerment of the individual, by focusing on means to enable people to become independent and self-sufficient.
Vicki Standish Family Fund	To support the well being of children and young people and to assist them to reach their potential.
Vilde Family Fund	Environment and animal welfare issues
Wanless Family Fund	General charitable purposes.
Wealth Mentoring Group Fund	General charitable purposes.
Westgate Health Charitable Fund	General charitable purposes.
Will & Lucy Martin Fund	General charitable purposes.
Williams Fund	Programs which promote social justice, Aboriginal reconciliation, and sustainability of the environment, both in Australia and overseas. Focus on education and employment for disadvantaged, affordable housing, environment and breast cancer.
Willmore Fund	Education, with focus on committed underprivileged students – including youth at risk - to attend/ or continue to attend school/university/TAFE and other educational institutions.
With One Seed	Supporting subsistence communities in Timor Leste to make environments sustainable, to end poverty and hunger, to deliver universal education and to create global partnerships.
Women's Health Victoria Fund	Promoting, advocating for and supporting women's health in Victoria.
Worwong Fund	To support environmental integrity.
Zalewski Fund	Issues of homelessness, mental illness, human rights and post correction support, particularly impacting on women and young people.

GUMNUT ACCOUNTS

22
Annie's Wish
Barry Prior Humanitarian Fund
Berry Fund
Better Tomorrow Fund
Brockman-Munn Fund (The)
Clarence Community Fund
Clay Gardner Charitable Fund
Eve & Bill Chandler Fund
Farrall and Nolan Family Account
Four Eleven Seven
Gumnut One
Helen Richardson Fund
Krils Fund
Kylee Farrell Lung Fund
League of Social Praxis
M L Jones
Macston Social Endeavour
Mary & David Fund
McMillan Family Fund

MOGGS
Mundy-Westall 'Moment-in-Time' Fund
NICHE
O'Nibbs Gumnut
Parsons and Nathan Gumnut
Reve Fund
S R Marzano Community Fund
Smith and Carrick Family
Stan Willis Fund
Stanley Family Fund
Strachan Clan Seil Fund
T.H.F. Fund
Tango
The Freetown Fund
The Lana Wilson Memorial Fund
Thompson-Lobb Family Fund
Tony Adams Fund
Trej Li-Goh
Two Cents Fund
Woolley Family Gumnut



Fitzroy Town Hall
201 Napier St
Fitzroy VIC, 3065
03 9412 0412
admin@communityfoundation.org.au
www.communityfoundation.org.au

This has been printed on recycled paper with CO2 Savings of 272kgs.

