

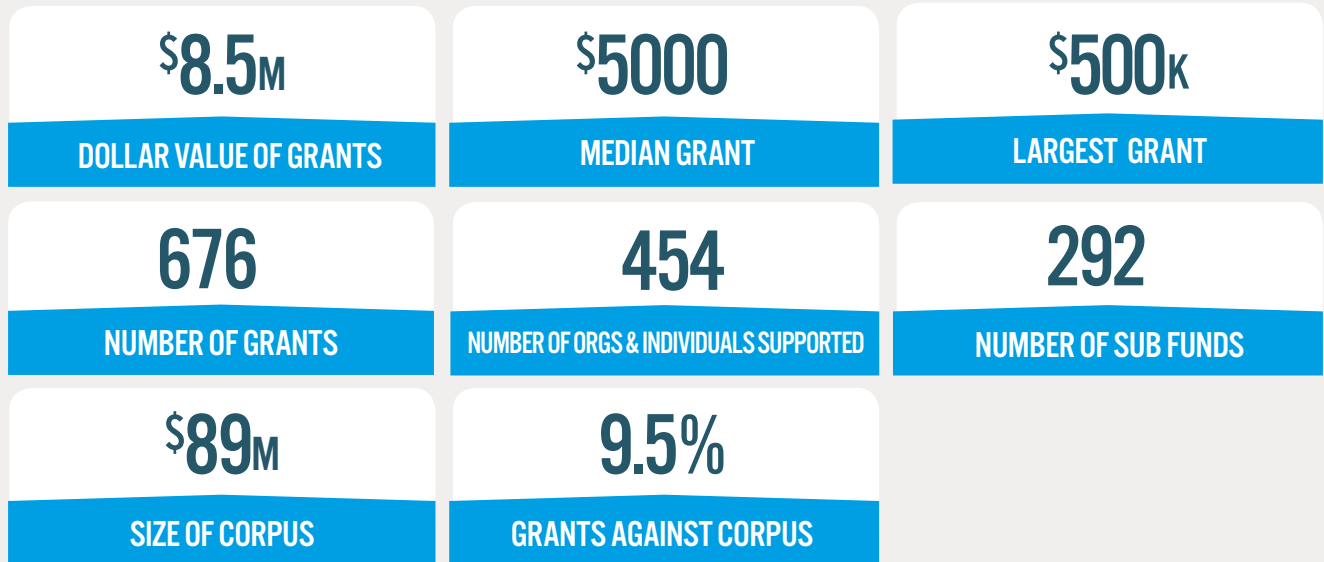
# COMMUNITY OF GIVING



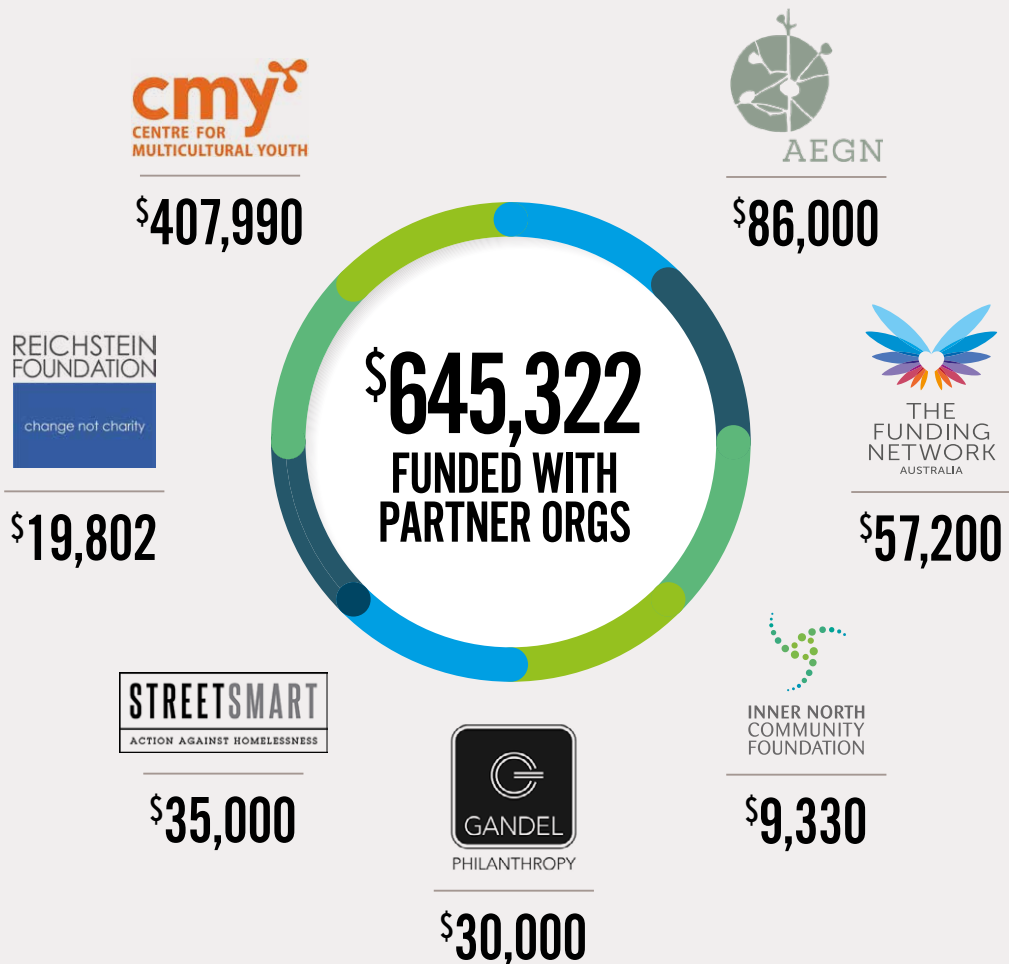
GRANTS & FUNDS 2017/18

# YEAR IN REVIEW 2017/18

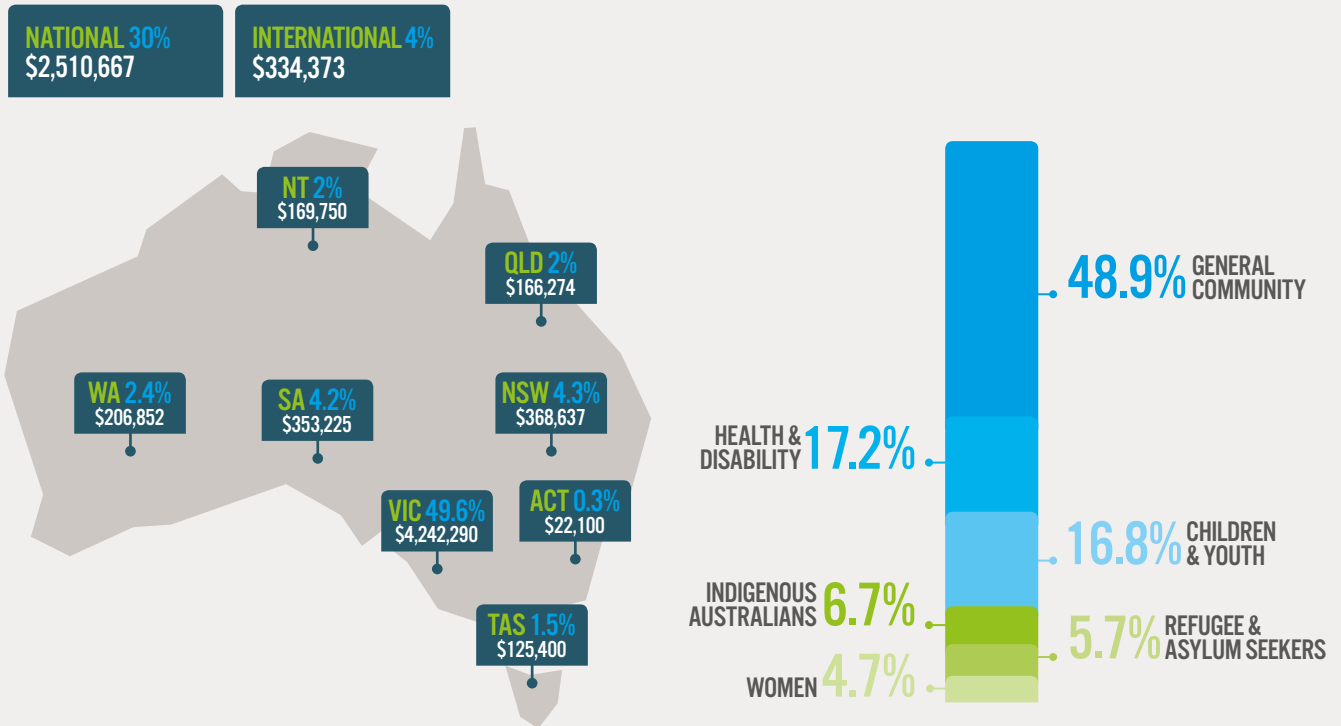
In 2017/18, our community gave \$8.5 million, reaching a broad range of target groups, issues, and locations. 96% of giving was within Australia with 30% going towards nationwide initiatives.



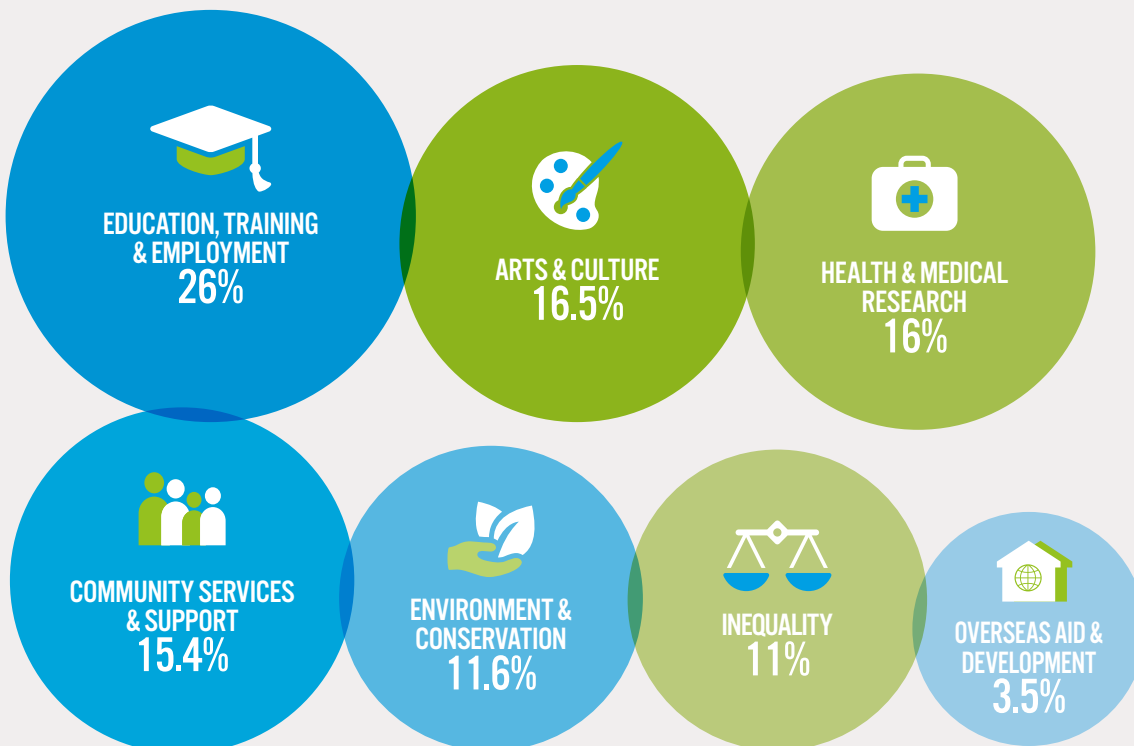
## CO-FUNDING PARTNERS



# SUPPORTING COMMUNITIES & TARGET GROUPS



# SUPPORTING THE CAUSES AUSTRALIANS CARE ABOUT



A list of grants made in 2017/18 can be viewed at [communityfoundation.org.au](http://communityfoundation.org.au)

# GRANTS

RECIPIENT	PROJECT	FUND
<b>Arts &amp; Culture</b>		
3MBS-FM Development Fund	3MBS Chairman's Circle	Henkell Family Fund
3RRR Transmission Fund	General charitable purposes	Miller Fund
45 Downstairs Inc	General charitable purposes	Ballandry (Peter Griffin Family) Fund
45 Downstairs Inc	General charitable purposes	Hart Line Fund
Abbotsford Convent Foundation	General charitable purposes	Ballandry (Peter Griffin Family) Fund
Abbotsford Convent Foundation	General charitable purposes	Henkell Family Fund
Acclaim Awards Ltd	Italy study trip	Henkell Family Fund
Archie Roach Foundation	General charitable purposes	Beeton Family Fund
Auckland Philharmonia Orchestra	Support for young Australian singer Siobhan Stagg	Sylvia Fisher Fund
Australian Bach Society	General charitable purposes	Henkell Family Fund
Australian Centre for the Moving Image	General charitable purposes	Sally Browne Fund
Australian Chamber Orchestra	General charitable purposes	Ballandry (Peter Griffin Family) Fund
Australian International Opera Awards Public Fund	General charitable purposes	Henkell Family Fund
Australian National Academy of Music	Greta Bradman Performance – August 2017	Henkell Family Fund
Australian National Academy of Music	Alchemy	Henkell Family Fund
Australian War Memorial	For Country For Nation Exhibition book	Johnstone Gumption Fund
Australian Youth Orchestra Appeal Trust Fund	AYO Melbourne support	Henkell Family Fund
Beyond Zero Emissions Inc	Zero Carbon Industry project	Hamer Family Fund
Black Dog Institute	Kurdiji 1.0	Vicki Standish Family Fund
Central Australian Aboriginal Congress	Central Australian Aboriginal Womens Choir	Dorrie Alcock Memorial Fund
Co Opera Inc	2018 opera touring	Henkell Family Fund
Co Opera Inc	Two performances in March 2018	Henkell Family Fund
Co Opera Inc	Barber of Seville Tour	Henkell Family Fund
Council of Trustees of the National Gallery of Victoria	2020 NGV Triennial	Sally Browne Fund
Crashendo! Bairnsdale Inc Public Fund	Schools music program	Hamer Family Fund
Dungala Kaiela Foundation	Dungala Kaiela Writing Awards	Fairer Futures Fund
Flinders Quartet	Subscription and regional program	Hamer Family Fund
Flinders Quartet	New composers program	Scarlet's Fund
German Lutheran Trinity Church	Church building maintenance	Henkell Family Fund
Hadassah Charity Limited	Out of the Shadows documentary	EM Horton Family Fund
Human Rights Arts & Film Festival Gift Fund	Schools & Community Outreach Screening Program	Hart Line Fund
Individual recipient (name withheld)	The Kristian Fredrikson Scholarship for Design in The Performing Arts	Kristian Fredrikson Scholarship
Jam Factory Contemporary Craft & Design Inc	General charitable purposes	Carreker Community Fund

RECIPIENT	PROJECT	FUND
<b>Arts &amp; Culture</b>		
Jam Factory Contemporary Craft & Design Inc	FUSE Glass Award	Carreker Community Fund
Lyric Opera of Melbourne	Coronation of Poppea opera production	Henkell Family Fund
Lyric Opera of Melbourne	Support for LES MAMELLES	Henkell Family Fund
Malthouse Theatre	General charitable purposes	Sally Browne Fund
McClelland Gallery and Sculpture Park	General charitable purposes	Sally Browne Fund
Melba Opera Fund	General charitable purposes	Ballandry (Peter Griffin Family) Fund
Melba Opera Fund	General charitable purposes	Henkell Family Fund
Melba Opera Fund	IT upgrade	Zalewski Fund
Melbourne Chamber Orchestra Donation Fund	Core and regional chamber music program	Hamer Family Fund
Melbourne Festival	Patrons Circle	Henkell Family Fund
Melbourne Fringe Fund	General charitable purposes	Sally Browne Fund
Melbourne Recital Centre Public Fund	Music Circle Patrons program	Henkell Family Fund
Melbourne Symphony Orchestra Fund	Principal Patron program	Henkell Family Fund
Melbourne Writers Festival	Schools' Program	Hart Line Fund
More Than Opera	General charitable purposes	Henkell Family Fund
More Than Opera	German-Australian Opera Grant	Henkell Family Fund
More Than Opera	Artistic Director support German-Australian Opera Grant	Henkell Family Fund
Musica Viva Development Fund	Mornington Peninsula	Ballandry (Peter Griffin Family) Fund
Musica Viva Development Fund	General charitable purposes	Ballandry (Peter Griffin Family) Fund
Musica Viva Development Fund	Music in schools	Hamer Family Fund
North Home Pty Ltd	Australian Cultural Fund: NORTH – The Warlu Collection	Beecher Family Charitable Fund
Opera Australia	General charitable purposes	Ballandry (Peter Griffin Family) Fund
Opera Australia	General charitable purposes	Ballandry (Peter Griffin Family) Fund
Opera Australia	Opera Australia Capital Fund	Henkell Family Fund
Opera Australia	Opera Australia Patrons Program	Henkell Family Fund
Opera Australia	Patrons Program	Henkell Family Fund 2
Opera Foundation Australia Trust Fund	Deutsche Oper Berlin Award	Henkell Family Fund
Peninsula Summer Music Festival Public Fund	In support of the operatic program of the festival	Henkell Family Fund
Queensland Theatre Company	General charitable purposes	Davie Family Fund
Queensland Theatre Company	Bille Brown Studio refurbishment	Keith & Jeannette Ince Fund
Royal Melbourne Philharmonic Society	RMP Aria Awards 2017	Henkell Family Fund
Royal Melbourne Philharmonic Society	Tchaikovsky, Angel of Music project	Henkell Family Fund
Saint Marks Fitzroy	St Marks music development	St Mark's Anglican Church Fitzroy Choral Scholarship Fund

<b>RECIPIENT</b>	<b>PROJECT</b>	<b>FUND</b>
<b>Arts &amp; Culture</b>		
Scope (Aust) Ltd	Music therapy program at Chelsea Lifestyle centre	B B & A Miller Fund
Somebody's Daughter Theatre Inc	General charitable purposes	Beeton Family Fund
State Orchestra of Victoria	Purchase of new Celeste instrument	Henkell Family Fund
Stella Prize Inc Public Fund	Final instalment of 3-year commitment	Omi-Albers Fund
Student Youth Network	General charitable purposes	EastWeb Fund
The Art Gallery Board (Art Gallery of South Australia)	Biennial Ambassadors Program: Divided Worlds	Carreker Community Fund
The Arts Centre	Arts Angel Program	Henkell Family Fund
The Australian Club	Facade restoration	Nash Family Fund
The Boite (Vic) Inc	Diversitat and Boite Millennium Chorus	Clack Family Memorial Fund
The Lieder Society of Victoria	Prizes for Liederfest 2018 and support of recital series	Henkell Family Fund
The Melbourne Opera Company Limited	Tristan & Isolde Program	Henkell Family Fund
The Melbourne Opera Company Limited	Training programme for young Australian singers	Sylvia Fisher Fund
The Opera Studio Melbourne	Scholarships	Henkell Family Fund
The Richard Wagner Society Special Productions Fund	General charitable purposes	Henkell Family Fund
The Trustee for Bendigo Art Gallery Foundation	General charitable purposes	Howard Nathan Fund
Tin Alley String Quartet	String quartet recording project	Hamer Family Fund
Trustee for Opera Scholars Australia Trust	General charitable purposes	Henkell Family Fund
Victorian Opera Company Ltd	Foundation Leader Circle and The Artist Circle	Henkell Family Fund
William Cooper Memorial Committee	William Cooper Statue	Beecher Family Charitable Fund
Woodend Winter Arts Festival	General charitable purposes	Henkell Family Fund
Writers Victoria	Hazel Rowley Literary Fellowship	Hazel Rowley Literary Fund
Yarraville Anglican Parish	Community Garden and Activity Space	Hobsons Bay Community Fund (Extension)



<b>RECIPIENT</b>	<b>PROJECT</b>	<b>FUND</b>
<b>Community Service &amp; Support</b>		
Aboriginal Evangelical Fellowship Family and Youth Services	Chaplains to work with and support Aboriginal communities in Australia	Ralph & Betty Sims Fund
Assistance Dogs Australia Limited	Training of assistance dogs for people with a disability	Kinder Charitable Fund
Asylum Seekers Resource Centre	General charitable purposes	Hart Line Fund
Asylum Seekers Resource Centre	General charitable purposes	Williams Fund
Australian-German Welfare Society Inc	German Week March 2018	Henkell Family Fund
Australian-German Welfare Society Inc	General charitable purposes	Henkell Family Fund
Backpacks 4 SA Kids Inc.	Anchor Packs	Impact 100 South Australia
Backpacks 4 VIC Kids	Purchasing of backpacks for kids	Unico Community Fund
Berry Street Victoria	General charitable purposes	Juno Fund
Bravehearts	General charitable purposes	Slater & Gordon Community Fund
Brisbane Youth Service Inc	General charitable purposes	Holding Redlich Social Justice Fund
Brotherhood of St Laurence	Workplace Giving Donation	Dina Grollo Community Fund
CARAD	Eat. Share. Connect. Food truck	Impact 100 WA
Carer Links Men's Group	General charitable purposes	Hobsons Bay Community Fund (Extension)
CASSE Australia Inc	General charitable purposes	Dara Fund No. 2
Catherine House Trust	Support for women experiencing homelessness	Carreker Community Fund
Change Agency	Community leaders development program	Hamer Family Fund
Children's Ground	Projects in Alice Springs town camps	Juno Fund
Cricket Victoria	Lohy's Little Legends Cricket Clinics	John Cummins Memorial Fund (Extension)
Daydawn Advocacy Centre	Helping Noongar families avoid eviction	Tass Nyungar Fund
Diversitat	Stepping Forward	Vanraay Family Fund
Dogs for Kids with Disabilities	Assistance dog for an individual (name withheld)	Unico Community Fund
E W Tipping Foundation	Construction of a house at Balnarring for the disabled	Baird Family Fund
Elizabeth Morgan House Aboriginal Women's Services	General charitable purposes	Wealth Mentoring Group Fund
Family Life Limited	Creating Capable Communities in Tootgarook: Creating Capable Leaders	Dominic & Anne Gallace Family Fund
Family Life Limited	Community Bubs for Indigenous Families	Dominic & Anne Gallace Family Fund
Fareshare Australia	Five Million Meal Brisbane Kitchen – Robot coupe floor dicer	Davie Family Fund
Gateway Community Services	Bus Purchase	B B & A Miller Fund
Gateway Community Services	Bus Purchase	Wanless Family Fund
GenJunction Inc	Establishment grant	Steve Lawrence Social Innovation Non-Tax Deductible Fund

RECIPIENT	PROJECT	FUND
<b>Community Service &amp; Support</b>		
German Lutheran Trinity Church	German Lutheran Trinity Church, East Melbourne	Henkell Family Fund
GingerCloud Foundation	General charitable purposes	Holding Redlich Social Justice Fund
Guide Dogs for the Blind Association of Queensland	General charitable purposes	Kinder Charitable Fund
Helping Hoops Inc	General charitable purposes	Holding Redlich Social Justice Fund
Holy Trinity Williamstown	Community Lunch Program	Hobsons Bay Community Fund (Extension)
House with no steps	Tiwi Street	Kinder Charitable Fund
Human Rights Law Centre	Asylum Seeker and Refugee Rights	Clare Murphy Fund
Information and Cultural Exchange (ICE)	Barbershop	Impact 100 Sydney North
Jewish Care (Victoria) Inc	Housing Support Services	Charles David Fund
Kids Under Cover	Workplace Giving Donation	Dina Grollo Community Fund
Launch Housing	General charitable purposes	Juno Fund
Launch Housing	General charitable purposes	Slater & Gordon Community Fund
Lighthouse Foundation	Providing counselling services to participants	Wanless Family Fund
Living the Dream Foundation	Wellbeing Engagement Project	Slater & Gordon Community Fund
Loddon Campaspe Multicultural Services	Friday Food Safari	Dennoch Fund
Manna Inc	Homeless for the Night 2018	Espero Fund
Martin Luther Homes Boronia Inc	Improvements for Martin Luther Homes Boronia	Henkell Family Fund
Mary Potter Foundation Inc	General charitable purposes	Carreker Community Fund
Merton CFA	Install reversing camera in Merton fire truck	Mansfield Community Fund
Orange Sky Australia Ltd	Project OSSY: Orange Sky Sydney Youth	Impact 100 Sydney North
Point Lonsdale Surf Lifesaving Club – Building Fund Account	New clubhouse	Bell Family Fund
Point Lonsdale Surf Lifesaving Club – Building Fund Account	New clubhouse	Nash Family Fund
Puddle Jumpers Inc	Puddle Jumpers Camps and Activities	Impact 100 South Australia
Radfly Inc.	General charitable purposes	Davie Family Fund
Riding For The Disabled Association of Victoria Inc	General charitable purposes	Rod and Pamela Wells Community Fund
Righteous Pups Australia	Mobility Assistance Dog for an individual (name withheld)	Jared Dunscombe Fund
Rural Aid Ltd	Purchase and transport of livestock feed	Kinder Charitable Fund
safe steps Family Violence Response Centre	Pets in Crisis program	Charles David Fund
safe steps Family Violence Response Centre	Pets in Crisis program	The TAP Fund
Salvation Army – (NSW) PROPERTY	General charitable purposes	The Giving Well
Salvation Army Australia Eastern Territory Social Work	Workplace Giving Donation	Dina Grollo Community Fund



RECIPIENT	PROJECT	FUND
<b>Community Service &amp; Support</b>		
Salvation Army Southern Territory Social Work	The Red Shield Appeal	Geostudies Fund
Second Chances SA	General charitable purposes	Impact 100 South Australia
SecondBite	General charitable purposes	Abercrombys Charitable Fund
SecondBite	General charitable purposes	Ashworth Family Fund
SecondBite	General charitable purposes	Charles David Fund
SecondBite	General charitable purposes	John and Eileen Clark Family Fund
SNAICC	General charitable purposes	Beecher Family Charitable Fund
South Kingsville Community Centre	Food Too Good To Waste	Hobsons Bay Community Fund (Extension)
Southern Cross Kids' Camps	Geelong Kids Living Life to the Full	Wealth Mentoring Group Fund
Southern Support School	Gymability 2017	Slater & Gordon Community Fund
St Peter's Eastern Hill Melbourne Charitable Foundation	St Peter's Eastern Hill Lazarus Centre	Ballandry (Peter Griffin Family) Fund
St Vincent De Paul Society Victoria Inc	St Vincent de Paul Society Warrnambool	Ballandry (Peter Griffin Family) Fund
St Vincent De Paul Society Victoria Inc	CEO Sleepout	Beecher Family Charitable Fund
St Vincent De Paul Society Victoria Inc	St Vincent de Paul Society Warrnambool	Homework Club Partnership Fund (Extension)
StreetSmart Australia	Willum Warrain Womens Group/Emergency Aid	Alf & Meg Steel Fund
StreetSmart Australia	StreetSmart Collective Community Grants Nov 2017	Espero Fund
StreetSmart Australia	Infoxchange Australia – Ask Izzy Phone Recharge Program	Story Street Fund
StreetSmart Australia	Travellers Aid Australia – Homelessness Support Points	Story Street Fund
StreetSmart Australia	FareShare – Night Shift	Story Street Fund
StreetSmart Australia	StreetSmart Collective Community Grants Nov 2017	Story Street Fund
Surf Life Saving Australia	General charitable purposes	Dominic & Anne Gallace Family Fund
Tabulam and Templer Homes for the Aged Inc	General charitable purposes	Henkell Family Fund
Taralye	General charitable purposes	Unico Community Fund
The Finnish Friendly Visiting Service	Connecting Up	Hobsons Bay Community Fund
The Funding Network	General charitable purposes	Beecher Family Charitable Fund
The Funding Network	The Funding Network Pledges	Bell Family Fund
The Funding Network	General charitable purposes	Bell Family Fund
The Funding Network	Women and Mentoring	Bell Family Fund
The Funding Network	Sisterworks, Birth for Humankind, Women and Mentoring	Clare Murphy Fund
The Funding Network	General charitable purposes	Fairness Fund
The Funding Network	The Funding Network Pledges	Kaplan Dascalu Fund

<b>RECIPIENT</b>	<b>PROJECT</b>	<b>FUND</b>
<b>Community Service &amp; Support</b>		
The Funding Network	General charitable purposes	Katrina's Sparkle Fund
The Funding Network	The Funding Network Pledges	Katrina's Sparkle Fund
The Funding Network	General charitable purposes	Wanless Family Fund
The Haven Foundation	16 fully self-contained one bedroom units in Geelong	Ralph & Betty Sims Fund
The Smith Family	General charitable purposes	Geostudies Fund
Travellers Aid Australia	Programs that address homelessness	Judy Glick
Travellers Aid Australia	General charitable purposes	Maude Hargrave Fund
Travellers Aid Australia	Travellers Aid endowment fund	Rod and Pamela Wells Community Fund
Welcome to Australia	Welcome to the Game	B B & A Miller Fund
West Welcome Wagon	Welcome Homes (WWW's Summer Support Drive)	Hobsons Bay Community Fund
White Lion Incorporated	Workplace Giving Donation	Dina Grollo Community Fund
White Lion Incorporated	General charitable purposes	John and Eileen Clark Family Fund
Windeward Bound Trust	Youth Challenge Voyage and Youth development programmes	David Boykett Tall Ships Voyaging Fund
Women's Property Initiatives	General charitable purposes	Dina Grollo Community Fund
Woor-Dungin	Koondee Woonga-Gat Toor-rong Fund – Coordination and Administrative Support	Towards a Just Society Fund
Young People in Nursing Homes National Alliance	Transitional support for people with complex needs	Paterson Family Fund
Youth Off The Streets Limited	Workplace Giving Donation	Dina Grollo Community Fund
Youth Off The Streets Limited	Don Bosco House	Holding Redlich Social Justice Fund
Youth Projects Ltd	Women's Wellness Programme – The Living Room	Wealth Mentoring Group Fund

<b>RECIPIENT</b>	<b>PROJECT</b>	<b>FUND</b>
<b>Education, Training &amp; Employment</b>		
100 Story Building	Story Hubs Pilot (made possible by a donation from the Stan Willis Trust)	ACF Impact Fund – Extension
100 Story Building	Story Hubs Pilot	Clack Family Memorial Fund
100 Story Building	Story Hubs Pilot	Hart Line Fund
Ardoch Youth Foundation Inc	Annual Contribution	FGF Charitable Fund
Ardoch Youth Foundation Inc	Southern Teaching Unit	Holding Redlich Social Justice Fund
Ardoch Youth Foundation Inc	General charitable purposes	Holding Redlich Social Justice Fund
Aurora Education Foundation Limited	Gaama	Fiona Shields Fund
Aurora Education Foundation Limited	Aurora Outreach Program	Impact 100 Sydney North
Aurora Education Foundation Limited	Development Manager Position	Keith & Jeannette Ince Fund
Aurora Education Foundation Limited	Support Development Manager	Keith & Jeannette Ince Fund
Australian National University	Alison Patrick Memorial Scholarship	Alison Patrick Memorial Fund
Australian Universities International Directors' Forum	Fund two attendees to the NAFSA Conference 2018	Tony Adams Extension Fund
BackTrack	General charitable purposes	Ballandry (Peter Griffin Family) Fund
Banksia Gardens Community Services	Kenley Court Neighbourhood House Homework Club	Rana and Alan Fund
Banksia Gardens Community Services	Kenley Court Neighbourhood House Homework Club	Vanraay Family Fund
Brotherhood of St Laurence	Brotherhood of St Laurence – Stepping Stones to Small Business	Dennoch Fund
Brotherhood of St Laurence	Brotherhood of St Laurence – Stepping Stones to Small Business	Vanraay Family Fund
Buddhist Society Of Victoria Inc	General charitable purposes	Metta Fund
Carlton Neighbourhood Learning Centre	CNLC participation in the Social Traders Crunch accelerator program	Espero Fund
Centre for Multicultural Youth	Homework Club Collaboration Program	Baker Watson Fund
Centre for Multicultural Youth	Homework Club Collaboration Program	Ballandry (Peter Griffin Family) Fund
Centre for Multicultural Youth	Pathways to Employment Project	Hart Line Fund
Centre for Multicultural Youth	Homework Club Collaboration Program	Hart Line Fund
Centre for Multicultural Youth	Homework Club Collaboration Program	Homework Club Partnership Fund (Extension)
Centre for Multicultural Youth	Homework Club Collaboration Program	John Cummins Memorial Fund
Centre for Multicultural Youth	Homework Club Collaboration Program	Rana and Alan Fund
Centre for Multicultural Youth	Homework Club Collaboration Program	Sally Oatley Memorial Fund
Centre for Multicultural Youth	Homework Club Collaboration Program	Sunning Hill Fund
Centre for Multicultural Youth	Homework Club Collaboration Program	Vanraay Family Fund
Centre for Multicultural Youth	Homework Club Collaboration Program	Will & Lucy Martin Fund
Change Agency	Community Organising Fellowships 2017-18	Fairer Futures Fund
Christadelphian Heritage College	Christadelphian Heritage College Homework Club	Homework Club Partnership Fund (Extension)
Creeds Farm Living and Learning Centre	Australian Neighbourhood House Association Homework Club	Ballandry (Peter Griffin Family) Fund
Creeds Farm Living and Learning Centre	Australian Neighbourhood House Association Homework Club	Homework Club Partnership Fund (Extension)

RECIPIENT	PROJECT	FUND
<b>Education, Training &amp; Employment</b>		
Darul-Ulum College of Victoria	Darul Ulum College Homework Club	Homework Club Partnership Fund (Extension)
Deakin University	Pilot Pitcher Partners Scholarship Program	Pitcher Partners Charitable Fund
Deutsche Schule Melbourne Building Fund	General charitable purposes	Henkell Family Fund
Dress for Success (DFS)	The 'Going Places' Project	Impact 100 WA
Dress for Success Sydney Inc	General charitable purposes	Holding Redlich Social Justice Fund
Dungala Kaiela Foundation	General charitable purposes	Fairer Futures Fund
Edmund Rice Community and Refugee Services	Edmund Rice Homework Club	Homework Club Partnership Fund (Extension)
Emma McLean Kindergarten and Day Care Inc	The Intergenerational Garden	Hobsons Bay Community Fund (Extension)
Footscray City College	John Cummins Memorial Scholarships	ACF Impact Fund – Extension
Footscray City College	4 x student grants	John Cummins Memorial Fund
Footys4all	General charitable purposes	Story Street Fund
Foundation For Rural and Regional Renewal	Daylesford Primary School	Betty Fulton Fund
Foundation For Rural and Regional Renewal	School Voucher Program	Betty Fulton Fund
Foundation For Rural and Regional Renewal	Daylesford Primary School: MultiLIT literacy program	Betty Fulton Fund
Free to Feed	The Free to Feed Project	EM Horton Family Fund
Ganbina	Scholarship Program	B B & A Miller Fund
Ganbina	General charitable purposes	Beeton Family Fund
Ganbina	General charitable purposes	Williams Fund
Global Society Foundation	General charitable purposes	Tony Adams Extension Fund
Glossop High School	2 x Joy Mavis Schwartz-Seidler Musical Scholarships	Joy Mavis Schwartz-Seidler Musical Fund
Graduate Women Victoria	Online application system, administration & additional grants	Graduate Women Victoria
Graduate Women Victoria	Scholarships and bursaries	Graduate Women Victoria Donors Fund
Hear and Say – centre for deaf children	Social Skills program	Slater & Gordon Community Fund
Hume Global Learning Centre	Hume Global Learning Village Homework Club	Hart Line Fund
Indigenous Literacy Foundation	General charitable purposes	Beecher Family Charitable Fund
Indigenous Literacy Foundation	Book Supply	Clemenger Staff Fund
Indigenous Literacy Foundation	General charitable purposes	Hart Line Fund
Individual recipient (name withheld)	Doctoral studies – final instalment	Tony Adams Extension Fund
Individual recipient (name withheld)	School Supplies for Monash University student	Williams Fund
Insight Education Centre for the Blind and Vision Impaired	General charitable purposes	Maude Hargrave Fund

<b>RECIPIENT</b>	<b>PROJECT</b>	<b>FUND</b>
<b>Education, Training &amp; Employment</b>		
Kalamunda Primary Education Support Centre	Buying equipment for education support centre	Quinten Curry Tribute
Kamaruka	Kamaruka Homework Club	Homework Club Partnership Fund (Extension)
Karrkad-Kanjji Trust	Nawardeken Academy	Digger & Shirley Martin Environment Fund
King David School Scholarship Fund	Scholarship to assist female students in years 11 & 12 in science & mathematics.	DDJE Fund
Kurnai College	Kurnai College Homework Club	Hart Line Fund
LaTrobe University	David Jolley Leadership Award	David Jolley Leadership Award
Laverton Community Children's Centre	Plan a series of excursions and incursion	Hobsons Bay Community Fund
Life Saving Victoria	CALD Youth Aquatic Employment Program	B B & A Miller Fund
Life Saving Victoria	CALD Youth Aquatic Employment Program	Silver Gold Fund
Maharishi School	Maharishi School Homework Club	Homework Club Partnership Fund (Extension)
Mansfield Kindergarten	Landscaping and facilities upgrade of the Mansfield Kindergarten front entrance	Mansfield Community Fund
Meadow Heights Learning Shop Inc.	Meadow Heights Homework Club	Homework Club Partnership Fund (Extension)
Meadow Heights Learning Shop Inc.	Meadow Heights Homework Club	Rana and Alan Fund
Meadow Heights Learning Shop Inc.	Meadow Heights Homework Club	Sunning Hill Fund
Melbourne Indigenous Transition School	General charitable purposes	Hilary Dixon And John Dempster
MiCare Ltd	Melton Multicultural Homework Club	Dennoch Fund
MiCare Ltd	Melton Multicultural Homework Club	Homework Club Partnership Fund (Extension)
MiCare Ltd – New Hope Foundation	Werribee Family Learning Club	Dennoch Fund
MiCare Ltd – New Hope Foundation	Werribee Family Learning Club	Homework Club Partnership Fund (Extension)
Monash University	The Eric Dubsy Memorial Scholarship	Dubsy Family Fund
Monash University	Charlee Ferrar Scholar	Isabella and Marcus Paediatric Brainstem Tumour Fund
Newcomb Secondary College	'Nobody's Fool' re-engagement program	John Cummins Memorial Fund
Njernda Aboriginal Corporation	Homework Club Collaboration Program	Sally Oatley Memorial Fund
Njernda Aboriginal Corporation	Homework Club Collaboration Program	Sunning Hill Fund
North Geelong Secondary College	5 x student grants	John Cummins Memorial Fund
Northern College of Arts and Technology	5 x student grants	John Cummins Memorial Fund
Operation Flinders Foundation Inc.	Peer Group Mentor Employment Outcome Development Program	Impact 100 South Australia
Parade College	2 x student grants	John Cummins Memorial Fund
RMIT	To fund 2nd year in Bachelor of Nursing for a student	Herbert and Inge Littauer Fund
Room To Read Australia Overseas Aid Fund	Re-build a school destroyed during the devastating earthquakes	Kokopelli Knights Fund

RECIPIENT	PROJECT	FUND
<b>Education, Training &amp; Employment</b>		
Rotary Club of Richmond Next Step Trust	Rotary Next Step Program	Dennoch Fund
Sammy D Foundation	True Colours – Bullying & Violence Prevention Program	Impact 100 South Australia
Save the Children Australia	Hands on Learning – Mornington Peninsula	Ballandry (Peter Griffin Family) Fund
Scripture Union Victoria	General charitable purposes	Ralph & Betty Sims Fund
Stars Foundation	Special event for girls finishing their schooling	Clemenger Staff Fund
Stars Foundation	General charitable purposes	EM Horton Family Fund
Stars Foundation	Education for Aboriginal and Torres Strait Islander young women	Social Justice Fund
State Library of Victoria	Australian Learning Lecture Initiative	Koshland Innovation Extension Fund
Stella Prize Inc Public Fund	Schools Program	Hart Line Fund
Streat	General charitable purposes	Semaphore Fund
Swinburne University	First in the Family Scholarship	Apollo Fund
Swinburne University	First in the Family Scholarships – Year 1 of 3 for one student	Apollo Fund
Swinburne University	Young Mums Program	EastWeb Fund
The Alannah & Madeline Foundation	Connect Workshops on the Mornington Peninsular	Dominic & Anne Gallace Family Fund
The Ivanhoe Grammar School	Annual Aviation Scholarship program	Wanless Family Fund
The Smith Family	Girls at the Centre	DDJE Fund
The Smith Family	Wyndham Schools Community Hub	Dennoch Fund
The Smith Family	Let's Read program	Hart Line Fund
The Social Studio	Transition to Social Studio's new business model	Assia Altman Fund
The Social Studio	Literacy Initiatives	Equal Access Fund
The Trustee for The AMA Indigenous Medical Scholarship Found	Indigenous Medical Scholarships	B B & A Miller Fund
The Trustee for Toorak College Scholarship Fund	Scholarship student	Alice Sloan Fund
Thornbury High School	For students in need of extra support	Dina Grollo Community Fund
Trustees of Marist Fathers for the province of Australia	Educational Developments in Ranong	Greg Larsen Family Fund
University College	Scholarship	Betty Fulton Fund
University College	University College Scholarship Program	McGregor Family Fund
University College	Jill Williams annual scholarship	Williams Fund
University of Melbourne	General charitable purposes	Ballandry (Peter Griffin Family) Fund
University of Melbourne	3 year fellowship/lecturer in the Faculty of Business & Economics for the revival of Modern Economic History	Ballandry (Peter Griffin Family) Fund
University of Melbourne	University of Melbourne – Lullaby Playgroup	Dennoch Fund
University of Melbourne	Scholarship for refugee student's 1st semester fees	Education Support Fund



<b>RECIPIENT</b>	<b>PROJECT</b>	<b>FUND</b>
<b>Education, Training &amp; Employment</b>		
University of Melbourne	Community Elder attendance at the First 1000 Days Conference	Fairer Futures Fund
University of Melbourne	One PhD scholarship	Miette Skiller Scholarship Fund
University of Melbourne	University of Melbourne – Lullaby Playgroup	Vanraay Family Fund
Victorian Association of State Secondary Principals	'Ourschool' project	Hart Line Fund
Victorian Association of State Secondary Principals	'Ourschool' project	Koshland Innovation Fund
Victorian Foundation for Survivors of Torture Inc	Support for tertiary study for refugee	Anna Wearne Fund
Volunteers West Inc.	Hobsons Bay Governance Mentors Pilot Project	Hobsons Bay Community Fund (Extension)
Wathaurong Aboriginal Co-Operative Ltd	Wathaurong Aboriginal Cooperative Homework Club	Fairness Fund
Wathaurong Aboriginal Co-Operative Ltd	Wathaurong Aboriginal Cooperative Homework Club	Sally Oatley Memorial Fund
Western Chances	General charitable purposes	DDJE Fund
Western Chances	General charitable purposes	Westgate Health Charitable Fund
Western Sydney University	The Whitlam Institute – for education research and schools projects	Hart Line Fund
Whittlesea Community Connections Inc	Whittlesea Community Connections Homework Club	Homework Club Partnership Fund (Extension)
William Angliss Institute Foundation Scholarship Fund	2017 Phyllis Budd Scholarship	Phyllis Budd Fund
Williamstown Community and Education Centre	Reaching Across the Ages	Hobsons Bay Community Fund

RECIPIENT	PROJECT	FUND
<b>Environment &amp; Conservation</b>		
1 Million Women	General charitable purposes	Worworing Fund
350.Org	Hands Off Our Charities	Fairer Futures Fund
350.Org	Hands Off Our Charities	Melliodora Fund
350.Org	Hands Off Our Charities	Worworing Fund
Australian Conservation Foundation	ACF & Lifeblood Alliance Murray River Fellowships	Fairer Futures Fund
Australian Conservation Foundation	Murray-Darling Rivers Fellowship – Second Round	Melliodora Fund
Australian Environment Grantmakers Network	Strategic Supporter Campaign	Fairer Futures Fund
Australian Environment Grantmakers Network	General charitable purposes	Keith & Jeannette Ince Fund
Australian Environment Grantmakers Network	Sustaining Fund – matched funding challenge	Worworing Fund
Australian Marine Conservation Society	UNESCO World Heritage and Climate Campaign	B B & A Miller Fund
Australian Marine Conservation Society	Save our sanctuaries facebook campaign	Baker Watson Fund
Australian Marine Conservation Society	World Heritage Committee & the Great Barrier Reef	Digger & Shirley Martin Environment Fund
Australian Marine Conservation Society	UNESCO World Heritage and Climate Campaign	Dominic & Anne Gallace Family Fund
Australian Marine Conservation Society	Saving the reef by choosing coral over coal	Dominic & Anne Gallace Family Fund
Australian Marine Conservation Society	Great Barrier Reef Campaign	Fairer Futures Fund
Australian Marine Conservation Society	UNESCO World Heritage and Climate Campaign	Vilde Family Fund
Australian Wildlife Conservancy	General charitable purposes	Ballandry (Peter Griffin Family) Fund
Australian Wildlife Conservancy	General charitable purposes	Davie Family Fund
Australian Youth Climate Coalition Gift Fund	Aboriginal Fracking Forum	B B & A Miller Fund
Australian Youth Climate Coalition Gift Fund	Aboriginal Fracking Forum	Fairer Futures Fund
Australian Youth Climate Coalition Gift Fund	General charitable purposes	Fairer Futures Fund
Australian Youth Climate Coalition Gift Fund	General charitable purposes	Melliodora Fund
Barwon Heads Community Arts Garden	Barwon Heads Community Arts Garden: Barwon Estuary Board Game	Hamer Family Fund
BirdLife	Protecting threatened shorebirds and their habitats in key sites	Curlew Fund
BirdLife Western Australia	Know Your Neighbourhood	Impact 100 WA
Bob Brown Foundation	Vote Tarkine campaign	Fairer Futures Fund
Bush Heritage Australia	General charitable purposes	Geostudies Fund
Central Victorian Biolinks Alliance	Core funding	Alf & Meg Steel Fund
Central Victorian Biolinks Alliance	Sustaining Biolinks Alliance	Fairer Futures Fund
Central Victorian Biolinks Alliance	Glideways	The TAP Fund
Centre for Policy Development Ltd	Sustainable Economy Program	Digger & Shirley Martin Environment Fund

RECIPIENT	PROJECT	FUND
<b>Environment &amp; Conservation</b>		
Centre for Policy Development Ltd	Sustainable Economy Promoter	Fairer Futures Fund
Climate Council	Cities Power Partnership	Fairer Futures Fund
Climate Council	General charitable purposes	Koshland Innovation Fund
Climate Council	Winning the National Energy Debate	Williams Fund
Climate Council	Cities Power Partnership	Worworing Fund
Deakin University	Blue Carbon Lab – Support for graduate associate candidates	Wanless Family Fund
Enova Energy	Re-Power Byron Shire	Hamer Family Fund
Environment Tasmania	Marine Conservation Program	Alf & Meg Steel Fund
Environment Victoria Inc	General charitable purposes	Dominic & Anne Gallace Family Fund
Environment Victoria Inc	Re-Power Victoria and associated campaign.	Hamer Family Fund
Environment Victoria Inc	General charitable purposes	Koshland Innovation Extension Fund
Environment Victoria Inc	General charitable purposes	Koshland Innovation Fund
Environment Victoria Inc	Step Up Victoria Campaign	Melliodora Fund
Environmental Defenders Office QLD	Acland Coal Mine legal action	Worworing Fund
Environmental Justice Australia	The Western Region Environment Centre Werribee Land Fill Campaign	Alf & Meg Steel Fund
Environmental Justice Australia	Forests legal work – the Friends of Leadbeater's Possum court case	Alf & Meg Steel Fund
Environmental Justice Australia	Kuark Forest legal action	Vilde Family Fund
Environs Kimberley	Campaign to protect the Fitzroy River	Vilde Family Fund
Foundation For Rural and Regional Renewal	Minyumai Land Holding Aboriginal Corporation: Removal of feral cattle from Minyumai Indigenous Protected Area	Fairer Futures Fund
Friends of the Earth (Australia)	Friends of the Earth – Sustainable Cities Campaign	Running Waters Fund
Greenpeace Australia Pacific Ltd	Impact Safari Bhutan Scholarship	Global Leadership Fund
International Women's Development Agency	Wide Bay Conservation Association: Youth Nature & Cultural Convention	Alf & Meg Steel Fund
Invasive Species Council	General charitable purposes	Curlew Fund
Kimberley Land Council	Kimberley Women Rangers Bush Products Enterprise Development	Fairer Futures Fund
Kimberley Land Council	Kimberley Women Rangers Bush Products Enterprise Development	Melliodora Fund
Market Forces	General charitable purposes	Fairer Futures Fund
Nature Conservation Council of NSW Environment Gift Fund	Community Organising Fellowship	Melliodora Fund
Norman Wettenhall Foundation	General charitable purposes	Williams Fund
PEW Charitable Trusts	Country Needs People Campaign	ACF Impact Fund
PEW Charitable Trusts	Country Needs People Campaign	Clack Family Memorial Fund
PEW Charitable Trusts	Country Needs People Campaign	Fairer Futures Fund

RECIPIENT	PROJECT	FUND
<b>Environment &amp; Conservation</b>		
PEW Charitable Trusts	Country Needs People Campaign	Johnstone Gumption Fund
PEW Charitable Trusts	Country Needs People Campaign	Melliodora Fund
PEW Charitable Trusts	Country Needs People Campaign	Sunning Hill Fund
PEW Charitable Trusts	Country Needs People Campaign	Williams Fund
Port Phillip Ecocentre Incorporated	Nature Play Mud and Mindfulness	Hamer Family Fund
Purves Environmental Fund	Preventing unrestricted tree clearing in QLD homes	EM Horton Family Fund
Purves Environmental Fund	Stop Tree Clearing campaign of the Queensland Land Clearing Alliance and the Stand Up for Nature alliance (NSW)	Melliodora Fund
RSPCA Queensland Ltd	Animals rescued by RSPCA QLD from dogfighting	Kinder Charitable Fund
Solar Citizens Australia	Core operational funding and South Australian Renewable power campaign	Digger & Shirley Martin Environment Fund
Solar Citizens Australia	Repower SA campaign	Hamer Family Fund
Sustainable Living Foundation	General charitable purposes	Worworing Fund
Tasmanian Land Conservancy	National Private Land Conservation Conference 2017	Melliodora Fund
The Environment Centre NT Public Fund	Sustainable Development in NT	Melliodora Fund
The Lost Dogs Home	General charitable purposes	Henkell Family Fund
The Tree Project	General charitable purposes	Maude Hargrave Fund
Total Environment Centre	Boomerang Alliance: Plastic waste reduction campaigns	Fairer Futures Fund
Victorian National Parks Association	General charitable purposes	Dominic & Anne Gallace Family Fund
Victorian National Parks Association	Campaigns for additions to the national parks estate and strategic policy revision	Kaplan Dascalu Fund
Victorian National Parks Association	Conserving Victoria's Forests, Woodlands & Threatened Species	Melliodora Fund
Wettenhall Environment Trust	General charitable purposes	Fairer Futures Fund
Williamstown Community and Education Centre	Advocates for the Environment	Hamer Family Fund
Yea Community House	'Break it Down and Grow'	Hamer Family Fund
Zoos Victoria	Conservation Program – saving the Eastern Barred Bandicoot	Vicki Standish Family Fund

RECIPIENT	PROJECT	FUND
<b>Health &amp; Medical Research</b>		
11 Individual recipients (names withheld)	Goulburn Valley Medical Workforce Fund Scholarship	Goulburn Valley Medical Workforce Fund
2 Individual recipients (names withheld)	SEPC Grant Round 2018	South Eastern Primary Care Fund
64 Individual recipients (names withheld)	GP Professional Development Program	Southern General Practice Education Fund
Allergy & Anaphylaxis Australia	Research	Dominic & Anne Gallace Family Fund
Altona Sports Club	Award for Youth Inclusion in Sport and Recreation	Hobsons Bay Community Fund (Extension)
Austin Health	Brain Tumour Support Service	John Cummins Memorial Fund (Extension)
Barnstoneworth FC	Award for Youth Inclusion in Sport and Recreation	Hobsons Bay Community Fund (Extension)
Berwick Healthcare	SEPC Grant Round 2018	South Eastern Primary Care Fund
Beyond Blue Limited	General charitable purposes	Abercrombys Charitable Fund
Beyond Blue Limited	New Access Promotions Project	Abercrombys Charitable Fund
Beyond Blue Limited	General charitable purposes	The Giving Well
Black Dog Institute	Kurdiji 1.0	Maude Hargrave Fund
Brainwave Australia	Bow Tie Lunch 2017 pledge	Sally Browne Fund
Cancer Council NSW	Mystery Box Rally – The Peter Andre Experience	Beecher Family Charitable Fund
Cancer Council Western Australia	Toolbox Videos	Slater & Gordon Health Projects and Research Fund
CanTeen	General charitable purposes	Henkell Family Fund
Cerebral Palsy Alliance	General charitable purposes	Geostudies Fund
Cerebral Palsy Alliance	General charitable purposes	Unico Community Fund
Children's Tumour Foundation	Research into brain tumours in newborns	Zalewski Fund
Cure Brain Cancer Foundation	Brain cancer research: in memory of Max Davidson	APT Conservation And Charitable Fund
Diabetes Australia	Research	Dominic & Anne Gallace Family Fund
Epilepsy Queensland Inc	General charitable purposes	Walker Wayland Australasia Fund
Family Planning Tasmania	Long Acting Reversible Contraception	Impact 100 Tasmania
Fight MND	General charitable purposes	Abercrombys Charitable Fund
Florey Institute of Neuroscience and Mental Health	The Brains Trust	Hart Line Fund
Florey Institute of Neuroscience and Mental Health	Arrow STRAIGHT Nitric Oxide Measurement System	Ralph & Betty Sims Fund
Footscape Inc	General charitable purposes	EastWeb Fund
Gallipoli Medical Research Foundation	Liver cancer research: Purchase of laboratory equipment	Kinder Charitable Fund
Glen Orden AFL & Cricket Club	Award for Youth Inclusion in Sport and Recreation	Hobsons Bay Community Fund (Extension)

RECIPIENT	PROJECT	FUND
<b>Health &amp; Medical Research</b>		
Heads Together for ABI	General charitable purposes	Alice Sloan Fund
Heart and Lung Transplant Trust (Victoria) Inc.	Alfred Hospital – Heart Transplant Accommodation fund	Wanless Family Fund
Hudson Institute	Paediatric Cancer Research Symposium	Isabella and Marcus Paediatric Brainstem Tumour Fund
Hudson Institute	PhD Scholarship	Miette Skiller Scholarship Fund
Hummingbird House Charity	Music therapy programme for kids in palliative care	Miller Fund
Independence Australia (Paraguay Victoria)	General charitable purposes	Ralph & Betty Sims Fund
Institute of Respiratory Health	Attendance at international conference	Slater & Gordon Health Projects and Research Fund
Larter Consulting Pty Ltd	SEPC Grant Round 2018	South Eastern Primary Care Fund
Love Your Sister	General charitable purposes	New Idea Charitable Fund
Marie Stopes International Australia	Campaign for Reproductive Rights	Clare Murphy Fund
McGrath Foundation Limited	General charitable purposes	Williams Fund
Medecins Sans Frontieres Australia	General charitable purposes	Clare Murphy Fund
Medecins Sans Frontieres Australia	General charitable purposes	Lois Bryson
Medecins Sans Frontieres Australia	General charitable purposes	Wanless Family Fund
MND Australia	General charitable purposes	Wanless Family Fund
Monash University	Australian participation in the international BIOMEDE study	Isabella and Marcus Paediatric Brainstem Tumour Fund
Monash University	Health Literacy in SCI Patients	Slater & Gordon Health Projects and Research Fund
Monash University	Inhaled oxytocin project	Story Street Fund
Multiple Sclerosis Australia	Outdoor Living for People Incapacitated by MS	Hobsons Bay Community Fund
Multiple Sclerosis Australia	General charitable purposes	Kaplan Dascalu Fund
Multiple Sclerosis Australia	General charitable purposes	Macmar Fund
Murdoch Childrens Research Institute	General charitable purposes	Ballandry (Peter Griffin Family) Fund
Murdoch Childrens Research Institute	HealthNuts Research Study	Wanless Family Fund
National Breast Cancer Foundation	Research	Dominic & Anne Gallace Family Fund
Neuro Sciences Victoria	Development of evidence-based, innovative strategies to enhance healthy and active lifestyles	The Giving Well
Northern Sydney Local Health District	Bowel Care outcomes in Spinal Care Patients	Slater & Gordon Health Projects and Research Fund
Numurkah Health Service	Goulburn Valley Medical Workforce Fund Scholarship	Goulburn Valley Medical Workforce Fund
O'Brien Foundation	Hummingbird Ambassador	Sally Browne Fund
O'Brien Foundation	Hummingbird Ambassador	Sally Browne Fund
Pelvic Pain Foundation of Australia Limited	General charitable purposes	Henkell Family Fund
Peter MacCallum Cancer Institute	Prostrate Cancer Research	Dominic & Anne Gallace Family Fund



RECIPIENT	PROJECT	FUND
<b>Health &amp; Medical Research</b>		
Prahran Mission	Hearing Voices program	Ralph & Betty Sims Fund
Prostate Cancer Foundation of Australia	General charitable purposes	Carreker Community Fund
Public Interest Advocacy Centre	Asylum Seeker Health Rights Project	B B & A Miller Fund
Rainbow Club of Point Cook	Award for Youth Inclusion in Sport and Recreation	Hobsons Bay Community Fund (Extension)
Royal Childrens Hospital	General charitable purposes	Henkell Family Fund
Royal Flying Doctor Service of Australia	RFDS Rural Women's GP Service – 2-day clinics in Robinvale	B B & A Miller Fund
Royal Flying Doctor Service of Australia	Outback Car Trek	Abercrombys Charitable Fund
Royal Melbourne Hospital	Equipment	Dominic & Anne Gallace Family Fund
Syndromes without a Name (S.W.A.N) Australia	General charitable purposes	N E Renton Bequest
The Alfred Hospital	Equipment	Dominic & Anne Gallace Family Fund
The Alfred Hospital	General charitable purposes	Wanless Family Fund
The Alfred Hospital	Leukaemia Unit	Wanless Family Fund
The Asbestos Diseases Research Foundation	Attendance for two participants at International Mesothelioma Interest Group Conference	Slater & Gordon Health Projects and Research Fund
The Shepherd Centre	General charitable purposes	Unico Community Fund
The Women's Foundation	Monitoring equipment for the Women's Special Care Nursery	Will & Lucy Martin Fund
University of Sydney	Brain Cancer Biobanking Australia	Isabella and Marcus Paediatric Brainstem Tumour Fund
University of WA	Mesothelioma and exercise	Slater & Gordon Health Projects and Research Fund
Very Special Kids	General charitable purposes	Henkell Family Fund
Very Special Kids	Creative Art Therapy	Kaplan Dascalu Fund
Weenthunga Health Network Inc	Mobile phone purchase	Anna Wearne Fund
Weenthunga Health Network Inc	Bendigo Health Day	B B & A Miller Fund
Weenthunga Health Network Inc	General charitable purposes	B B & A Miller Fund
Weenthunga Health Network Inc	General charitable purposes	Sunning Hill Fund
Williamstown Cannons Basketball Club	Award for Youth Inclusion in Sport and Recreation	Hobsons Bay Community Fund (Extension)
Williamstown Seagulls 'FIDA' program	Award for Youth Inclusion in Sport and Recreation	Hobsons Bay Community Fund (Extension)
Williamstown Swimming And Life Saving Club	Award for Youth Inclusion in Sport and Recreation	Hobsons Bay Community Fund (Extension)
Youngcare	General charitable purposes	Slater & Gordon Community Fund

RECIPIENT	PROJECT	FUND
<b>Overseas Aid &amp; Development</b>		
Alola Foundation	Support for Alola Foundation in Timor Leste	<b>Dorrie Alcock Memorial Fund</b>
Amnesty International Australia	General charitable purposes	<b>Lois Bryson</b>
Australian Red Cross Society	People seeking refuge from violence in the Rakhine State	<b>APT Conservation And Charitable Fund</b>
Australian Red Cross Society	Myanmar crisis appeal	<b>Story Street Fund</b>
Australian Red Cross Society	People affected by the drought in South Sudan	<b>Williams Fund</b>
Balibo House Trust	Belola prep school	<b>B B &amp; A Miller Fund</b>
Balibo House Trust	Belola prep school	<b>Dorrie Alcock Memorial Fund</b>
Balibo House Trust	Belola prep school	<b>Spend It Well Fund</b>
Benevolence Australia	Impact Safari Bhutan Scholarship	<b>Global Leadership Fund (Extension)</b>
Cambodian Children's Fund	General charitable purposes	<b>Miller Fund</b>
Global Women's Project	General charitable purposes	<b>Kaplan Dascalu Fund</b>
Hamlin Fistula Ethiopia (Australia)	New specialist obstetric fistula treatment facility in Soroti, Uganda.	<b>Story Street Fund</b>
International Women's Development Agency	General charitable purposes	<b>Fairer Futures Fund</b>
International Women's Development Agency	Individual Deprivation Measure	<b>Wahroonga Fund</b>
John Fawcett Foundation	Coordinator salary	<b>Clare Murphy Fund</b>
Love Mercy Foundation	General charitable purposes	<b>Holding Redlich Social Justice Fund</b>
Love Mercy Foundation	General charitable purposes	<b>Holding Redlich Social Justice Fund</b>
Marie Stopes International Australia	Provision of reproductive choice and fertility control services to disadvantaged women	<b>Kinder Charitable Fund</b>
Medecins Sans Frontieres Australia	Donation for Yemen	<b>Juno Fund</b>
M'Lop Tapang Organization	Drugs and Harm Reduction Program	<b>Dorrie Alcock Memorial Fund</b>
Oxfam Australia	Timor-Leste appeal	<b>Geostudies Fund</b>
Oxfam Australia	Timor-Leste appeal	<b>Hart Line Fund</b>
Oxfam Australia	Donation for Yemen Crisis	<b>Juno Fund</b>
Oxfam Australia	General charitable purposes	<b>Lois Bryson</b>
Rotary Australia Overseas Aid Fund	LHA Education & Development Program, Siem Reap, Cambodia	<b>John and Eileen Clark Family Fund</b>
ShelterBox Australia	Support victims of the Syrian Crisis	<b>Story Street Fund</b>
Singing Kites	General charitable purposes	<b>Davie Family Fund</b>
UNICEF Australia	General charitable purposes	<b>Dorrie Alcock Memorial Fund</b>
YGAP	General charitable purposes	<b>Ashworth Family Fund</b>

RECIPIENT	PROJECT	FUND
<b>Inequality</b>		
Alliance For Gambling Reform	Down, down, bets are down – Coles and \$1 bets	ACF Impact Fund
Alliance For Gambling Reform	Down, down, bets are down – Coles and \$1 bets	Alf & Meg Steel Fund
Alliance For Gambling Reform	Down, down, bets are down – Coles and \$1 bets	Clive St
Alliance For Gambling Reform	Down, down, bets are down – Coles and \$1 bets	Fairer Futures Fund
ANDI (Australian National Development Index)	Measuring the Australia We Want: a Community-Research Partnership	ACF Impact Fund
ANDI (Australian National Development Index)	Measuring the Australia We Want: a Community-Research Partnership	Alf & Meg Steel Fund
ANDI (Australian National Development Index)	Measuring the Australia We Want: a Community-Research Partnership	B B & A Miller Fund
ANDI (Australian National Development Index)	Measuring the Australia We Want: a Community-Research Partnership	Fairer Futures Fund
ANDI (Australian National Development Index)	Measuring the Australia We Want: a Community-Research Partnership	Hart Line Fund
Anglicare Tasmania	Tasmanian pokie reform	ACF Impact Fund
Anglicare Tasmania	Tasmanian pokie reform	Alf & Meg Steel Fund
Anglicare Tasmania	Tasmanian pokie reform	Beecher Family Charitable Fund
Anglicare Tasmania	Tasmanian pokie reform	Fairer Futures Fund
Australia 21	Matched funding pledge as part of EOFY campaign	Social Justice Fund
Australia 21	Matched funding pledge as part of EOFY campaign	Social Justice Fund
Australian Community Philanthropy	General charitable purposes	Fairness Fund
Australian Community Philanthropy	General charitable purposes	Fairness Fund
Australian Council of Social Services	Poverty and Inequality Partnership in Australia	ACF Impact Fund
Australian Council of Social Services	Poverty and Inequality Partnership in Australia	Hart Line Fund
Australian Council of Social Services	Poverty and Inequality Partnership in Australia	Raettvisa Fund
Australian Council of Social Services	Poverty and Inequality Partnership in Australia	Social Justice Fund
Centre for Policy Development Ltd	General charitable purposes	Curlaw Fund
Centre for Policy Development Ltd	Sustainable Australian Agriculture and Climate Risks project	Hamer Family Fund
Diplomacy Training Program Limited	General charitable purposes	Hart Line Fund
Environment Victoria Inc	EV Victorian State Election Campaign	Fairer Futures Fund
Fair Agenda	Fair Agenda: The Hunting Ground	Fairer Futures Fund
Fair Agenda	Fair Agenda: The Hunting Ground	Lois Bryson
Fair Agenda	General charitable purposes	Lois Bryson

RECIPIENT	PROJECT	FUND
<b>Inequality</b>		
Fair Agenda	Fair Agenda: The Hunting Ground	Omi-Albers Fund
Fremantle Foundation	Subsidising Fremantle Foundation's rent	Fairness Fund
GetUp!	General charitable purposes	Lois Bryson
Human Rights Law Centre	Marriage Equality Campaign	ACF Impact Fund
Human Rights Law Centre	General charitable purposes	Ballandry (Peter Griffin Family) Fund
Human Rights Law Centre	Marriage Equality Campaign	Clive St
Human Rights Law Centre	Asylum Seeker and Refugee Rights Unit	Espero Fund
Human Rights Law Centre	Marriage Equality Campaign	Fairer Futures Fund
Human Rights Law Centre	Asylum Seeker and Refugee Rights Unit	Fairness Fund
Human Rights Law Centre	Marriage Equality Campaign	Johnstone Gumption Fund
Human Rights Law Centre	Marriage Equality Campaign	Juno Fund
Human Rights Law Centre	General charitable purposes	Lois Bryson
Human Rights Law Centre	Asylum Seeker and Refugee Rights Unit	Nicholas R Taylor Fund
Human Rights Law Centre	Marriage Equality Campaign	Story Street Fund
Human Rights Law Centre	General charitable purposes	Williams Fund
Human Rights Law Centre	Asylum Seeker and Refugee Rights Unit	Williams Fund
Human Rights Watch Australia	General charitable purposes	Beecher Family Charitable Fund
Human Rights Watch Australia	2018 Voices for Justice Annual Dinner pledge	Fairness Fund
Human Rights Watch Australia	2018 Voices for Justice Annual Dinner pledge	Hart Line Fund
Human Rights Watch Australia	General charitable purposes	Lois Bryson
International Detention Coalition	Asia pacific, end child detention, training and education	Ballandry (Peter Griffin Family) Fund
International Detention Coalition	General charitable purposes	Ballandry (Peter Griffin Family) Fund
International Detention Coalition	General charitable purposes	Williams Fund
Jumbunna Institute for Indigenous Education and Research	Journey to Give Stand and Respect initiative	ACF Impact Fund
Jumbunna Institute for Indigenous Education and Research	Journey to Give Stand and Respect initiative	B B & A Miller Fund
Jumbunna Institute for Indigenous Education and Research	Journey to Give Stand and Respect	Raettvisa Fund
Mercy Works	Mercy House of Welcome Legal Project	Slater & Gordon Community Fund
Nature Conservation Council of NSW Environment Gift Fund	Community Organising Fellowship	Digger & Shirley Martin Environment Fund
Per Capita Australia Limited	Per Capita Annual Tax Survey 2018	Social Justice Fund
Public Interest Advocacy Centre	Asylum Seeker Health Rights Project	Williams Fund
PVAW	General charitable purposes	Slater & Gordon Community Fund
Refugee Advice and Casework Service Inc	Providing pro bono legal support to people on temporary protection visas	Dubsky Family Fund
Refugee Advice and Casework Service Inc	General charitable purposes	Raettvisa Fund

<b>RECIPIENT</b>	<b>PROJECT</b>	<b>FUND</b>
<b>Inequality</b>		
Refugee Legal	General charitable purposes	Assia Altman Fund
RISE: Refugee Survivors & Ex-Detainees	RISE Fellow Project Coordinator	Assia Altman Fund
RISE: Refugee Survivors & Ex-Detainees	RISE Fellow Project Coordinator	Clive St
RISE: Refugee Survivors & Ex-Detainees	RISE Employment Services – Building Financial Sustainability for Refugees project	Dubsky Family Fund
RISE: Refugee Survivors & Ex-Detainees	RISE Fellow Project Coordinator	Williams Fund
RISE: Refugee Survivors & Ex-Detainees	RISE Employment Services – Building Financial Sustainability for Refugees project	Hart Line Fund
The Alannah & Madeline Foundation	Gun control and community safety project	ACF Impact Fund
The Alannah & Madeline Foundation	Gun control and community safety project	Johnstone Gumption Fund
The Alannah & Madeline Foundation	Gun control and community safety project	The Ngaruk Fund
The Australia Institute	Divest Invest Australia	Fairer Futures Fund
The Australia Institute	Australia Institute Research Fund	Fairer Futures Fund
The Australia Institute	General charitable purposes	Koshland Innovation Fund
The Australia Institute	The Australia Institute challenge/matching grant 2018	Social Justice Fund
The Trustee for The Conversation Trust	Public Interest Journalism Initiative	ACF Impact Fund
The Trustee for The Conversation Trust	Public Interest Journalism Initiative	B B & A Miller Fund
The Trustee for The Conversation Trust	Public Interest Journalism Initiative	Ballandry (Peter Griffin Family) Fund
The Trustee for The Conversation Trust	Civic journalism project	Beecher Family Charitable Fund
The Trustee for The Conversation Trust	Public Interest Journalism Initiative	Clack Family Memorial Fund
The Trustee for The Conversation Trust	Public Interest Journalism Initiative	Espero Fund
The Trustee for The Conversation Trust	Public Interest Journalism Initiative	Hart Line Fund
Victorian Women's Benevolent Trust	Dugdale Trust for Women & Girls: National Harm Prevention Fund	Fairer Futures Fund
Woor-Dungin	Walk with Woor-Dungin Campaign	Beecher Family Charitable Fund
Woor-Dungin	General charitable purposes	Beeton Family Fund
Woor-Dungin	General charitable purposes	Fairer Futures Fund
Woor-Dungin	General charitable purposes	Silver Gold Fund
Woor-Dungin	Operational expenses	Williams Fund

# SUB-FUNDS 2017/18

FUND	SPECIAL INTEREST
<b>A Peace of the Pie</b>	Arts and Culture, Health and medical research, Environment and conservation.
<b>Abbotsford Convent Fund</b>	Arts, cultural and charitable purposes.
<b>Abercrombys Charitable Fund</b>	Community services and support, health and medical research.
<b>ACF Impact Fund (Main &amp; Extension)</b>	The Impact Fund addresses issues that are timely, of national importance and reflects the interests and values of the ACF community. Our focus is on tackling inequality, empowering indigenous communities, safeguarding the environment and strengthening democracy.
<b>Agnes Robertson Fund</b>	Aged care, medical research, the arts and education.
<b>Alf &amp; Meg Steel</b>	Health and medical related causes, especially for the aged. Children both in Australia and overseas, gardening, the environment and Indigenous Australians.
<b>Alice Sloan Fund</b>	To provide financial and in-kind support as well as encouragement to enable young people to participate in varied pursuits, including sport, dance, music, art and outdoor education.
<b>Alison Patrick Memorial Fund</b>	To support graduate historical research in the broad area of French revolutionary history and also projects which focus on environmental issues.
<b>Allaway Lancashire Fund</b>	Support for social justice, ethical and environmental education and protection of cultural and natural heritage.
<b>AMCS Charitable Fund &amp; AMCS Charitable Fund Extension</b>	General charitable purposes, home care, Polish and multicultural communities
<b>Anna Rose &amp; Simon Sheikh Family Fund</b>	To support the people-powered movement tackling climate change and advancing climate justice in Australia
<b>Anna Wearne Fund</b>	To create opportunities for young people to reach their potential, where such potential is hampered due to disadvantage. The objectives of the sub-fund concern education, indigenous people, leadership and women's rights.
<b>Antoinette and John Richardson Memorial Fund</b>	Specific organisations, including Swinburne University, Victorian College of the Arts and St Francis Choir.
<b>Apollo Fund</b>	Education and profound hearing loss
<b>APT Conservation And Charitable Fund</b>	To support processes, events and activities that resolve problems to make a positive and measurable difference to selected causes.
<b>Ardoch Future Fund</b>	Making education a reality for young people, including those experiencing homelessness and disadvantage.
<b>Ashworth Family Fund</b>	Medical research
<b>Assia Altman Fund</b>	Focus on International development, LGBT organisations and projects, asylum seekers and refugees, animal rights and social entrepreneurship.
<b>Australian Children's Education Fund</b>	Children's education.
<b>Australian Disability and Indigenous People's Education Fund</b>	To support opportunities for lifelong learning for people with disabilities from Indigenous and non-indigenous backgrounds, from pre-primary to post tertiary.
<b>Australian Indigenous Persons Initiatives Fund</b>	Indigenous issues
<b>Australian Learning Lecture Fund</b>	The Australian Learning Lecture is a prestigious biennial lecture which brings big ideas in education to public attention for national discussion.



<b>FUND</b>	<b>SPECIAL INTEREST</b>
<b>Avalon Circle</b>	Mental illness, disability (intellectual, physical, sensory), homelessness, drug and alcohol dependency and victims of abuse.
<b>B B &amp; A Miller Fund</b>	Aboriginal education and health, disability, education, environment, medical research, mental health, youth suicide, drugs and addictions, disadvantage, developing countries and humanitarian crises.
<b>Baird Family Fund</b>	Meeting the needs of the intellectually disabled and their families.
<b>Baker Watson Fund</b>	Sane Australia, Guide Dogs and homelessness
<b>Ballandry (Peter Griffin Family) Fund</b>	General charitable purposes.
<b>Batty Prior Humanitarian Fund</b>	General charitable purposes
<b>Beecher Family Charitable Fund</b>	General charitable purposes.
<b>Beeton Family Fund</b>	General charitable purposes
<b>Bell Family Fund</b>	Social justice, animal welfare and medical research.
<b>Benjamin Fund</b>	General charitable purposes
<b>Berry Fund</b>	General charitable purposes
<b>Beyond Me</b>	To support young people to make a difference for others in the community.
<b>BFG Charitable Account</b>	General charitable purposes including the advancement of disadvantaged individuals and communities.
<b>Bridging Opportunities</b>	General charitable purposes, with a particular passion for projects that work with, support and empower asylum seekers, refugees and women.
<b>Carreker Community Fund</b>	General charitable purposes.
<b>Charles D'Aprano Award Fund</b>	To provide funding for a bi-annual scholarship awarded through Swinburne University of Technology to a student who wishes to extend and further their Italian related studies in Italy.
<b>Charles David Fund</b>	Social equity and holocaust studies.
<b>Chaskett Fund</b>	Support for rare book purchases for Melbourne libraries, especially the State Library of Victoria and support for bibliographical scholarship.
<b>Cherie Millar Education Fund</b>	Education, the arts and health in the LaTrobe Valley region
<b>Clack Family Memorial Fund</b>	General charitable purposes with focus on innovative programs in media and the arts, with particular emphasis on disadvantaged groups and rural and regional communities.
<b>Clare Murphy Fund</b>	Empowering women and children in SE Asia and South Pacific, international emergency relief, refugee support.
<b>Clemenger Staff Fund</b>	Each state office has a different focus for grantmaking, from young people at risk to literacy and capacity development.
<b>Clive St</b>	General charitable purposes
<b>Connie &amp; Craig Kimberley Fund</b>	General charitable purposes.
<b>Counterpart Fund</b>	Promoting, advocating for and supporting women's health in Victoria.
<b>Curlew Fund</b>	Conservation and indigenous conservation issues.

<b>FUND</b>	<b>SPECIAL INTEREST</b>
<b>Dahkota</b>	General charitable purposes
<b>David Boykett Tall Ships Voyaging Fund</b>	To develop life and leadership skills for Australian youth through the experience of voyages on tall ships.
<b>David Jolley Leadership Award</b>	To acknowledge and promote excellence and leadership in human services with a focus on tertiary social work education at La Trobe University across metropolitan and regional Victoria.
<b>Davie Family Fund</b>	Arts and Culture, Education, Training and employment, Disability, Environment and conservation.
<b>DDJE Fund</b>	General charitable purpose with interest in education.
<b>Dennoch Fund</b>	Empower communities e.g. by supporting social enterprises. Bridge potential divides such as religion, culture, distance, age, etc. Lead to an improvement in the quality of life for individuals who are impeded from living a contributory life without financial assistance. Encourage the development of skills in the arts.
<b>Digger &amp; Shirley Martin Environment Fund</b>	The environment and conservation.
<b>Dina Grollo Community Fund</b>	Youth education, employment and homelessness in the areas in which Grocon works.
<b>DISCAL Fund</b>	Disability and community advocacy.
<b>Dominic &amp; Anne Gallace Family Fund</b>	General charitable purposes
<b>Dominic Gianni Fund</b>	To enhance the lives of children with a disability.
<b>Dominica Whelan Endowment</b>	General charitable purposes.
<b>Dorrie Alcock Memorial Fund</b>	The fund is committed to the welfare and education of young children around the world, especially those who are disadvantaged by the effects of conflict and systemic poverty.
<b>Dubsky Family Fund</b>	Overseas aid, disadvantaged youth, education, the elderly and the arts.
<b>Durrabool Fund</b>	General charitable purposes.
<b>Eastern Health Charitable Fund</b>	General charitable purposes with particular emphasis on the alcohol and drug sector.
<b>EastWeb Fund (Main and Extension)</b>	Combating disadvantage and building community capacity amongst Victoria's Indigenous, asylum seeker and refugee communities.
<b>Education Support Fund</b>	Financial support to enable tertiary education of refugee children or children experiencing other categories of disadvantage- or the gaining of work related qualifications by adult refugees and/or asylum seekers
<b>Elizabeth Eggleston Fund</b>	Aboriginal law issues.
<b>EM Horton Family Fund</b>	Education and community wellbeing, with a focus on skills development; sustainability and the environment; support for Jewish organisations within Australia.
<b>Enviro Warriors</b>	Environmental projects and education within Australia and in developing countries. Projects focussing on indigenous cultures and their ecological knowledge.
<b>Equal Access Fund</b>	General charitable purposes, in particular improving literacy for Australians as a means of addressing systemic and intergenerational disadvantage.
<b>Espero Fund</b>	To improve society in a small way by supporting a number of charitable causes, in particular programs which focus of community advocacy, overseas development, improving educational opportunities and medical research.
<b>Eve &amp; Bill Chandler Fund</b>	General charitable purposes.

<b>FUND</b>	<b>SPECIAL INTEREST</b>
<b>Fairer Futures Fund</b>	Indigenous affairs, disadvantaged womens development in Australia and overseas, environment, education and a good start for disadvantaged groups.
<b>Fairness Fund</b>	Projects supporting education and employment, particularly for indigenous youth and women.
<b>Family Life Futures for Children Fund</b>	To support Family Life programs and activities.
<b>Farrall and Nolan Family Account</b>	General charitable purposes.
<b>Fellowship for Indigenous Leadership Fund</b>	Indigenous leadership and associated areas.
<b>FGF Charitable Fund</b>	General charitable purposes.
<b>Fiona Shields Fund</b>	Community services and welfare, community development and advocacy, environment and conservation, overseas aid and development. Targeting Children/young people, women, indigenous, refugees and asylum seekers.
<b>Four Eleven Seven</b>	General charitable purposes.
<b>Geddes Nairn Development Fund</b>	Capacity building for development partnerships in China, microfinance capacity building, refugee support especially in Australia, Oxfam Australia projects, especially in relation to China.
<b>Geostudies Fund</b>	General charitable purposes, with interest in the environment.
<b>Gerard Patrick Lonergan Scholarship Fund</b>	General charitable purposes.
<b>Global Gardens of Peace</b>	To support the vision of Global Gardens of Peace, to create peaceful, safe and serene environments where children and their families can come together to play, rest, heal and interact.
<b>Global Leadership Fund &amp; Global Leadership Fund Extension</b>	To develop leadership within communities.
<b>Goulburn Valley Medical Workforce Fund</b>	Health scholarships in the Goulburn Valley area.
<b>Graduate Women Victoria &amp; Graduate Women Victoria Donors Fund</b>	Scholarship fund for women in tertiary education in Victoria and scholarships for women undertaking masters and doctoral studies.
<b>Greg Larsen Family Fund</b>	Education to the disadvantaged in overseas countries and homelessness in Melbourne.
<b>Grieve Family Fund</b>	Social justice, especially with children, and environmental issues.
<b>Grigg Family Fund</b>	Education, health, the environment and social justice, with a focus on homeless people, refugees, Indigenous Australians, women and families.
<b>Grummitt Family Fund</b>	Cancer, heart disease, aged care and health facilities. Community causes, education facilities and a special interest in needs within the Goulburn Valley.
<b>Guddaa Fund</b>	General charitable purposes.
<b>Halstead Freshi Fund</b>	To assist in conservation of wildlife, animal protection and education.
<b>Hamer Family Fund</b>	Focus on the performing arts, especially music, innovation in care for the environment, opportunities for talented young people and projects that forward good government in Australia.
<b>Hardman Family Fund</b>	General charitable Purposes
<b>Hart Line Fund</b>	General charitable purposes, principally in the areas of education, the arts, human rights and the environment.
<b>Hazel Rowley Literary Fund</b>	Biographers, writers, lectures / presenters on writing experiences.

<b>FUND</b>	<b>SPECIAL INTEREST</b>
<b>Heather Watkins Memorial Fund</b>	To assist families, especially those with young and teenage children, affected by suicide. In particular, support for the Jesuit Social Services Support after Suicide program.
<b>Henkell Family Fund &amp; Henkell Family Fund 2</b>	Emphasis on the vocal arts, in particular opera, as well as supporting the German-Australian community.
<b>Henry Stein Fund</b>	Projects which increase access to and participation in the community by adults with autism, intellectual or profound disabilities. Priority given to women, Indigenous people and those from a culturally and linguistic diverse background.
<b>Herbert and Inge Littauer Fund</b>	Refugees, aged care, language and resettlement projects, health and cancer research and support, innovation and entrepreneurship, theatre, arts and music, Jewish community support and language and learning.
<b>Hilary Dixon And John Dempster</b>	General charitable purposes
<b>Hobsons Bay Community Fund &amp; Hobsons Bay Community Fund Extension</b>	General charitable purposes within Hobson's Bay municipality.
<b>Holding Redlich Social Justice Fund</b>	To promote social justice in the community, with a focus on assisting disadvantaged young people with education, training, employment and health.
<b>Homework Club Partnership Fund (Extension)</b>	The Homework Club Partnership Fund is focussed on supporting the development and sustainability of homework clubs for disadvantaged children and young people, including those from migrant and refugee background.
<b>Hopetoun Fund</b>	General charitable purposes.
<b>Howard McGeary Charitable Fund</b>	Support for adults and children with physical and intellectual disabilities; the homeless and disadvantaged in the community. Care and protection of the environment/conservation and animals.
<b>Impact 100 South Australia</b>	To make high impact grants to charitable causes in SA
<b>Impact 100 Sydney North</b>	To make high impact grants to charitable causes in Sydney North
<b>Impact 100 TAS</b>	To make high impact grants to charitable causes in TAS
<b>Impact 100 WA</b>	To make high impact grants to charitable causes in WA.
<b>Initiate Action Community Fund (Main and Extension)</b>	Education, girls and women in Melbourne's western suburbs.
<b>Isabella and Marcus Paediatric Brainstem Tumour Fund</b>	Research into paediatric brainstem tumours with a focus on Diffuse Intrinsic Pontine Glioma
<b>James Family Fund</b>	Early childhood, youth at risk, homelessness, international poverty and aid.
<b>Jared Dunscombe Fund</b>	Youth and Health
<b>Jax Acacia Fund</b>	Preservation and respect for the natural world to ensure it remains healthy and complete for future generations and the creation of a better quality of life for those suffering from Parkinson's disease.
<b>Jean Vincent Fund</b>	Fund not currently distributing.
<b>John and Eileen Clark Family Fund</b>	General charitable purposes.
<b>John Cummins Memorial Fund &amp; John Cummins Memorial Fund Extension</b>	Support for people with brain tumour linked to Austin Health, educational opportunities for young people experiencing disadvantage and other related social justice programs.
<b>Johnstone Gumption Fund</b>	Environment, open spaces, regional botanical gardens. Projects that support citizenship and community. Health and quality outcomes for patients.

<b>FUND</b>	<b>SPECIAL INTEREST</b>
<b>Joy Mavis Schwartz-Seidler Musical Scholarship</b>	Musical scholarship to students from Glossop High School in South Australia who have 1-2 year formal training and show musical growth potential.
<b>Judy Glick</b>	General charitable purposes.
<b>Juliet Allen Fund</b>	Projects that support women and children through health and education, sustain the environment or prevent international poverty or ill-health.
<b>Jump Start</b>	Building not-for-profit organisations capabilities and effectiveness
<b>Juno Fund</b>	General charitable purposes.
<b>Kaplan Dascalu Fund</b>	Shaping a just and compassionate society through supporting vulnerable people on the basis of family violence, homelessness, cultural identity, and enabling a more sustainable social services sector.
<b>Katrina's Sparkle Fund</b>	Safety and wellbeing of children and babies, social justice and fairness, family harmony and cohesion, educational opportunities for young people to maximise their potential especially through travel, and health issues.
<b>Keith &amp; Jeannette Ince Fund</b>	Environment and threatened species, education for disadvantaged children, assisting indigenous communities and early childhood development.
<b>Kinder Charitable Fund</b>	General charitable purposes
<b>Kirkham Family Fund</b>	Music and theatre, with emphasis on young artists and small theatre companies, and the environment and animal welfare.
<b>Koshland Innovation Fund (main and Extension)</b>	The Koshland Innovation Fund supports initiatives to contribute to learning, democracy, and ideas.
<b>Kristian Fredrikson Scholarship</b>	Scholarship to support career development for arts/theatrical design makers.
<b>KSR Accommodation Scholarship Fund</b>	General charitable purposes.
<b>Leosia</b>	To support grassroots and holistic Indigenous organisations that focus on empowerment and self-determination. The sub-fund aims to support programs that provide meaningful and sustainable training, education and employment pathways for Indigenous peoples.
<b>Lily Calvert Memorial Fund</b>	General charitable purposes.
<b>Lois Bryson</b>	To promote human rights through projects that address injustice and inequity between groups of people. Preference should be given to organizations less likely to be supported by governments and through politically conservative philanthropic initiatives.
<b>M &amp; L Attwood Fund</b>	General charitable purposes.
<b>Macmar Fund</b>	Supporting primary school education opportunities.
<b>Macston Social Endeavour</b>	General charitable purposes
<b>Malcolm Broomhead</b>	General charitable purposes.
<b>Mangala Fund</b>	To give something back to Monash University.
<b>Mansfield Community</b>	For the support and development of the Mansfield Community and surrounds.
<b>Maramingo Fund</b>	General charitable purposes.
<b>Mary &amp; David Fund</b>	General charitable purposes.

<b>FUND</b>	<b>SPECIAL INTEREST</b>
<b>Mary Perrottet Fund</b>	General charitable purposes.
<b>Maude Hargrave Fund</b>	Community services and welfare, Health and medical research.
<b>Mayer Morris Family Fund</b>	Aboriginal Australians, refugees living in Australia and residents of Timor Leste.
<b>McGregor Family Fund</b>	General charitable purposes with an emphasis on education for the disadvantaged.
<b>Melanie Holden Memorial Sub Fund</b>	To financially assist a young cancer sufferer's attendance at the Gawler Foundation.
<b>Melbourne Writers Festival Fund</b>	Encouraging all Victorians to read and to participate in the literary arts, through a socially and culturally inclusive festival that includes Australia's biggest literature event for school children.
<b>Melliadora</b>	Ecological sustainability, environmental advocacy and nature conservation.
<b>Metta Fund</b>	General charitable purposes.
<b>Miller Fund</b>	General charitable purposes.
<b>Misericordiae</b>	General charitable purposes.
<b>MOGGS</b>	General charitable purposes.
<b>Morris Family Fund (Main &amp; Ext)</b>	We have a strong commitment to a Christian perspective of Social Justice and Equality. We have an interest in the development of understanding of Christian Faith, refugees and other related causes especially in the Western Suburbs.
<b>Muna Rahman</b>	General charitable purposes.
<b>N E Renton Bequest &amp; N E Renton Bequest Family Fund</b>	Children with mental health issues.
<b>Nash Family Fund</b>	General charitable purposes.
<b>NICHE</b>	General charitable purposes.
<b>Nicholas R Taylor Fund</b>	Environment and conservation, Community development, indigenous education, disability.
<b>Omi-Albers Fund</b>	Refugees, children and youth, social change and human rights.
<b>O'Nibbs Gumnut</b>	General charitable purposes.
<b>Palliative Care Victoria</b>	To benefit palliative care in Victoria, the work of Palliative Care Victoria.
<b>Parsons and Nathan Gumnut</b>	Refugees, aged care, language and resettlement projects, health and cancer research and support, innovation and entrepreneurship, theatre, arts and music, Jewish community support and language and learning.
<b>Paterson Family Fund</b>	Assistance to small groups without a voice, particularly people with disabilities.
<b>Phyllis Budd Fund</b>	Support for young people wanting to work in hospitality but due to financial difficulty might not be able to continue to study.
<b>Pine Grove</b>	General charitable purposes.
<b>Pitcher Partners Charitable Fund</b>	General charitable purposes.
<b>Pomegranate Fund</b>	Health, education and community development.



<b>FUND</b>	<b>SPECIAL INTEREST</b>
<b>Positive Ideas Group</b>	To Foster Excellence and Innovation.
<b>Quercus Fund</b>	To support a variety of community initiatives.
<b>Quinten Curry Tribute</b>	General charitable purposes.
<b>Raettvisa Fund</b>	General charitable purposes.
<b>Ralph &amp; Betty Sims Fund</b>	To support a range of charitable organisations focussing on medical research, mental health, Aboriginal well being and Christian welfare .
<b>Rana and Alan Fund</b>	Overseas aid, especially in helping communities become self sufficient. The environment, Indigenous programs, refugees, health and human rights.
<b>Renner Family Fund</b>	General charitable purposes.
<b>Ridgeway Fund</b>	Overseas aid and development, Women and girls, Community support.
<b>RO Fund</b>	General charitable purposes.
<b>Rod and Pamela Wells Community Fund</b>	General charitable purposes.
<b>Running Waters</b>	Urban ecological sustainability, social justice and nature conservation, particularly through advocacy and community development.
<b>Sally Browne Fund</b>	Melbourne's Royal Botanic Gardens, the School of Botany at Melbourne University and motor neurone disease.
<b>Sally Isaac Memorial Scholarship Fund</b>	To create educational opportunities for young women aged 35 or younger who make a significant contribution to the community in fields of local government, social justice, aboriginal affairs (including reconciliation) arts and music, community health, CALD.
<b>Sally Oatley Memorial Fund</b>	To support initiatives in charitable areas, in mental health services, research, education and training, with emphasis on young people and families.
<b>Scarlet's Fund</b>	Creative projects in developing communities, focussing on children and young people.
<b>Semaphore Fund</b>	General charitable purposes.
<b>Silver Gold Fund</b>	General charitable purposes, in particular education and the combating of disadvantage with preference for granting to smaller organisations.
<b>Slater &amp; Gordon Community Fund</b>	General charitable purposes with an emphasis on social justice.
<b>Slater &amp; Gordon Health Projects and Research Fund</b>	Health and medical research, Disability.
<b>Social Justice Fund</b>	To contribute to the promotion of social and economic justice in Australia and in the developing countries of Africa, Asia, Latin America and the Pacific.
<b>South Eastern Primary Care Fund</b>	General charitable purposes.
<b>Southern General Practice Education Fund</b>	General charitable purposes.
<b>Spend It Well</b>	Projects in East Timor such as building schools to assist rebuild the nation's education infrastructure.
<b>St Marks</b>	To encourage and support the practice, performance and development of sacred choral music at St Marks Anglican Church, Fitzroy, through the granting of one or more annual scholarships for St Mark's Anglican Church Fitzroy Choral Scholars.

<b>FUND</b>	<b>SPECIAL INTEREST</b>
<b>Steve Lawrence Social Innovation Fund</b>	To support the creation of new services in Australia that enable citizens and organisations to better solve social problems.
<b>Story Street</b>	The Story Street sub-fund seeks to make a real difference through its giving, by focussing on the effectiveness and impact of the grants it makes to both local and international organisations.
<b>Stubbs and White Charitable Fund</b>	MS, Cerebral Palsy, Disadvantaged in Melbourne CBD.
<b>Sunning Hill</b>	To enhance education and training opportunities for Aboriginal people in the Northern Territory and Kimberley.
<b>Sunshine and Crocodile Fund</b>	General charitable purposes but with particular interest in indigenous communities and capacity building projects in Sri Lanka.
<b>Sylvia Fisher Fun</b>	An extended study bursary awarded to a singer for professional development.
<b>Tan Family Fund</b>	Aboriginal issues and advocacy.
<b>Tass Nyungar Fund</b>	General charitable purposes.
<b>Team Miller</b>	Focus on preventative programs which provide opportunities and support to vulnerable young people, before disadvantage becomes entrenched.
<b>The Andrew Plain Memorial Fund</b>	General charitable purposes.
<b>The Caroline Durre' Sub Fund</b>	The fund supports organisations working for the protection of the natural environment and biodiversity of Australia, organisations that seek equity and justice for women and refugees and organisations that promote health and well being for disadvantaged people in Australia and overseas.
<b>The Clements Fund</b>	To support the Gawler Foundation's Life for Living program and the renal cell carcinoma research program at the Austin Hospital.
<b>The Giving Well</b>	General charitable purposes.
<b>The Ngaruk Fund</b>	General charitable purposes.
<b>The Ripple Fund</b>	Arts and Culture, Community services and welfare, health and medical research, Community development and advocacy, Environment and conservation, Overseas aid and development.
<b>The Robison Fund</b>	Charitable purposes and in particular education and combating disadvantage. May include the provision of music programs for the disadvantaged in schools or the general community.
<b>The TAP Fund</b>	Education, training and employment, disability.
<b>THLOW</b>	General charitable purposes.
<b>Thu Giang Nguyen Fund</b>	An annual science prize to a student at Melbourne Girls College and a scholarship to an indigenous student in the Goulburn Valley.
<b>Tony Adams Fund &amp; Tony Adams Extension Fund</b>	To continue the work of Professor Tony Adams in international education by supporting activities in the areas of research, professional development and student mobility.
<b>Towards a Just Society Fund (main and Extension)</b>	To assist in the reduction of current injustices affecting particular groups and individuals, currently with emphasis on Indigenous education/capacity building.
<b>Trikojus Education Fund</b>	Scholarships to disadvantaged and gifted children in government schools.
<b>Two Cents Fund</b>	General charitable purposes.
<b>Unico Community Fund</b>	Education, training and employment.

<b>FUND</b>	<b>SPECIAL INTEREST</b>
<b>vandm</b>	Education, training and employment.
<b>Vanraay Family Fund</b>	Supporting equality and justice in the community, and projects that assist in initiating change so that people can help themselves. .
<b>Vicki Standish Family Fund</b>	To support the well being of children and young people and to assist them to reach their potential.
<b>Vilde Family Fund</b>	Environment and animal welfare issues.
<b>Wahroonga Fund</b>	Socio-economic research to tackle poverty Australia wide, particularly in Melbourne and rural areas. Refugee and asylum seekers, settlement issues and support, social inclusion, co funding and partnerships with other funders.
<b>Walker Wayland Australasia Fund</b>	General charitable purposes.
<b>Wanless Family Fund</b>	General charitable purposes.
<b>Wealth Mentoring Group Fund</b>	General charitable purposes
<b>Westgate Health Charitable Fund</b>	General charitable purposes.
<b>Williams Fund</b>	Programs which promote social justice, Aboriginal reconciliation, and sustainability of the environment, both in Australia and overseas. Focus on education and employment for disadvantaged, affordable housing, environment and breast cancer.
<b>Windarra Fund</b>	General charitable purposes.
<b>With One Seed</b>	Supporting subsistence communities in Timor Leste to make environments sustainable, to end poverty and hunger, to deliver universal education and to create global partnerships.
<b>Women's Health Victoria Fund</b>	Promoting, advocating for and supporting women's health in Victoria.
<b>Worowing fund</b>	To support Environmental sustainability and Environmental education.
<b>Zalewski Fund</b>	Issues of homelessness, mental illness, human rights and post correction support, particularly impacting on women and young people.



Community of Giving  
126 Wellington Parade  
East Melbourne VIC, 3002  
03 9412 0412  
[admin@communityfoundation.org.au](mailto:admin@communityfoundation.org.au)  
[communityfoundation.org.au](http://communityfoundation.org.au)

*This has been printed on recycled paper with CO2 Savings of 374kg.*

December 2018