

A photograph of a woman with dark hair tied back, wearing a brown knit sweater, leaning over a young child. The child is wearing a pink hoodie and is also leaning forward on a blue mat. The background is slightly blurred, showing an indoor setting. Large white quotation marks are overlaid on the image, framing the text on the right.

Australian
Communities
Foundation



GIVING VOICE

STORIES FROM OUR YEAR

Australian Communities Foundation
Annual Report 2012-13



Brotherhood of St Laurence employment programs

*GDP does not allow for the health of our children,
the quality of their education or the joy of their play.
It does not include the beauty of our poetry or the
strength of our marriages, the intelligence of our public
debate or the integrity of our public officials.
It measures neither our wit nor our courage, neither our
wisdom nor our learning, neither our compassion nor our
devotion to our country. It measures everything in short,
except that which makes life worthwhile.*

Robert Kennedy

Giving for good

Our Vision

To inspire and enable accessible philanthropy to build healthy resilient communities and positive social change across Australia.

Our Mission

A trusted and vibrant organisation that generates and distributes philanthropic resources to match donor interests to emerging social issues and the needs of communities.

Our Principles

Australian Communities Foundation makes philanthropy easy, accessible, inspiring and rewarding.

We aim to do this through our guiding principles:

- Tolerance
- Integrity
- Independence
- Equity
- Leadership
- Authority
- Commitment to social, economic, and environmental justice

Contents

Giving recognition	2
Giving voice	3
Giving leadership	4
Not just words	6
Giving voice to many - our structure	7
Planning your giving	8
Talk the talk	9
Collective voices	10
Sub-funds list	10
Giving opportunities	12
Planning to give	14
Twenty different voices. One consistent story	16
Become part of the discussion	18
Answering the call	19
Giving advice	20
Giving confidence	21
Financial report	22
Gumnut Accounts	22
Thank you	29

Giving recognition

This year was yet again one of record grants and strong growth in donations from our generous donors, both old and new. At the same time, our staff team was busy behind the scenes getting all our policies and procedures in place, running terrific events for our donors and ensuring that we have the foundations to continue to grow. We said goodbye to four long-serving Board members: Justice David Parsons (founding director since September 1997), Jo Grigg (since June 2007), Sandie De Wolf (since August 2008) and Tim James (since September 2009). All of these directors actively supported the foundation with their skills, knowledge and experience, and we are sorry to see them leave. New Board members joined - in July 2012 Steve Rothfield, Emma Woolley and George Krithis and in November 2012 Pamela McLure and Al Webster. All these new Board members have joined our sub-committees and have been active in all areas of Australian Communities Foundation (ACF).

By the time you read this, our CEO Clare Brooks will have completed her 18 month contract and returned to her home in London. During a period of growth and change Clare brought her experience from the community foundation field in Europe. She has raised the profile and potential of the Foundation and community philanthropy nationally, connecting us globally, and helped us develop our efficiency and effectiveness. One important outcome from her tenure is our continuing awareness of the importance of building the Australia-wide network of community foundations and the capacity for a national professional body to promote the potential of the movement to professional bodies, government and organisations a national level. We will also have said goodbye to Rebekah Lautman who leaves us to take up a new and exciting national position at Headspace, and Leonie Mugavin who is relocating to the Surf Coast Shire as their new Community Project Officer. I thank all of them for their service and terrific work at the Foundation.

In the spirit of our commitment to building communities of donors and contributing to thoughtful leadership in philanthropy, we were involved with a number of initiatives. One was the pilot of The Funding Network Australia, set up with funding from the Steve Lawrence Social Innovation Fund. Those of you who missed the TFN event in 2013 will really enjoy future events in 2014. Additionally, our Ambassadors for Philanthropy Tour raised the profile of community foundations in New South Wales, Victoria and Western Australia and forced all of us to think outside our comfort zones. Our fourth annual Philanthropy and Ethics Forum, held in partnership with Melbourne Writers Festival, explored the topic of "education, democracy and philanthropy" with a panel of thought-provoking speakers.

Finally, I'd like to thank all the Board members of Australian Communities Foundation, for their commitment, our staff members for their hard work and dedication, and the support and mentoring given to both Clare and me by our Strategic Advisors Group: Marion Webster, Hayden Raysmith, David Gibbs, Greg Larsen and Chris Arnold. They bring with them 16 years of history at the Foundation, as well as their vast networks.

We look forward to 2013-14 being another exciting year with our new CEO, Jonathan Chapman, and welcome him warmly to Australian Communities Foundation.



Annie Duncan
Chair

emotion21



Giving voice

We receive many visitors to our offices in Fitzroy Town Hall, but one which stands out this year was the young Indigenous operatic tenor Tiriki Onus who came to sing at our Indigenous Donors Circle event in October 2012. Not only did his magnificent voice fill the Council Chamber, corridors and stairs, but he also spoke about his life and the chance afforded to him to excel in his profession by the Dame Nellie Melba Opera Trust Harold Blair Scholarship.

It is therefore fitting that the theme of this year's annual report is "Giving Voice". We reflect upon the hum and buzz of our biggest year ever in terms of amount and number of grants - 7 million and 500 grants - and highlight just a few of the activities we undertook.

Two particularly robust spokespeople last year were Roberta d'Eustachio of Ambassadors for Philanthropy and Kevin Murphy of Berks County Community Foundation and US Council on Foundations, both of whom we hosted in April. Roberta spoke passionately of the need for more vocal philanthropy. "If no one talks about giving then there are no role models created," she said. Kevin powerfully advocated the role of community foundations at Philanthropy Australia's AGM, noting the high regard in which they're held by policy makers and the public in his own country because of their impact, outreach, openness and inclusion.

The theme of voices also extended to our work with the Australian National Development Index (ANDI) with whom we now partner. Headed by Professor Mike Salvaris, ANDI is a national, collaborative research project that will combine with an extensive community consultation process to draw thousands of Australians in conversation on "What Kind of Australia Do We Want?" It will be a fascinating debate to watch unfold in years to come.

The success of any conversation of course depends much on how we listen. As we go into a new year we are aware of the predictions of a rapidly changing and more difficult funding environment for charities and not-for-profits we support. Our ears and our imaginations will need to be open to their priorities and the needs of the people they support.

Working with you all has been an extraordinary gift. My thanks in particular to Dr Annie Duncan, all the Board, staff and volunteers of Australian Communities Foundation, as well as our donors and grantees. Your example, voices and stories will remain an enduring inspiration to me.



Clare Brooks

Cool Education, Australia



Kiruhuru Epicentre, Uganda



Giving leadership

Board, Sub-committees, Ambassadors and Staff

The Trustee of Australian Communities Foundation is Australian Communities Foundation Limited. The Trustee has a Board of directors of between four and 20 Trustees. The directors are appointed by the Board and serve for a period of three years, after which they may put themselves forward for another three years. At the end of two three year terms, a director may be invited to serve a further three year term.

The Board meets six times a year and between these meetings business is conducted through five sub-committees. At the Board meetings the trustees agree the broad strategy and the areas of activity of the Foundation. These include considerations of grantmaking and fund development, financial reporting, policy reviews, and risk management. The Board's operation and performance is externally reviewed every two years.

All community foundations are overseen by a volunteer board of leading professionals with expertise in identifying community needs. These include business and financial management, law, and community development. Board members volunteer their time to oversee the functions of Australian Communities Foundation and contribute financially to its operations.

Board of Directors

- A Annie V Duncan PhD (Chair)**
Director, Shipley Consultants, Fitted for Work, Bendigo Science Centre
Appointed 2006. Chair April 2012
- B Sue Dahn BCom, MBA, GradDip Applied Fin & Investment, FFinsia, FAICD, FASFA, FSCPA,**
Partner, Pitcher Partners. Director, MTAA Super. Member, Investment Committee, Trinity College, University of Melbourne, NFP Committee, AICD
Appointed 2010
- C Sandra de Wolf AM BA (Hons), DipSocStud, MSW, FAIM, FAICD, AASW**
CEO, Berry Street. Director, Family Relationship Services Australia. Deputy Chair, Victorian Children's Council. Member, Victorian Child Death Review Committee
Appointed 2008. Retired 2013
- D Jo Grigg BA**
Committee member, Amenity Tree Health
Appointed 2007. Retired 2012
- E Tim James BBus, DipFinPlan, CFP**
Executive Director, UBS. Director, Hanover Welfare Services
Appointed 2009. Retired 2013

- F George Krithis BBus, CFP (FPA), CPA (FPS - ASCPA)**
Principal, DFS Advisory. Member, Hanover Welfare Services Finance Committee
Appointed 2012
- G Pamela McLure BA, DipSoc, MA**
Appointed 2012
- H David Murray BA, DipCrim, MA**
Director, Youth Partnerships. Secretariat, Department of Education and Early Childhood Development
Appointed 2009
- I His Honour Judge David Parsons SC LLB (Hons)**
Judge of the County Court of Victoria. Director, Koorie Heritage Trust, Australian Community Support Organisation, Fellowship of Indigenous Leadership. Member, Law Council of Australia Indigenous Affairs, Victorian Bar Council Indigenous Legal Issues Committee, Judicial Officers' Cultural Awareness Committee
Appointed 1997. Retired 2012
- J Steve Rothfield BComm, MBA, CPA**
Director, First Nations Foundation, Dungala Kaiela Foundation, Australian Women Donors Network
Appointed 2012
- K Casey Tan BComm MMgt, FCA, FAIM, FAICD**
Director, Chatham Power Pty Ltd, Chatham Sdn Bhd, MoneyScout Pty Ltd
Appointed 2007
- L Alistair Webster BA, LLB (Hons)**
Manager, National Cultural Flows Research Project, Native National Title Council
Appointed 2012
- M Emma Woolley LLB (Hons)**
Partner, Hall & Wilcox. Member, Law Institute of Australia, Society of Trust and Estate Practitioners (STEP), Inner Temple (Inns of Court) London
Appointed 2012

Sub-committees

Australian Communities Foundation has five sub-committees of the Board. Each director is a member of at least one sub-committee. The sub-committees also contain external members who play a vital role with their extensive expertise and experience. Each sub-committee has delegated authority and acts within Board approved charters. As at July 2013, the current members of the sub-committees are:

Governance Committee

Annie Duncan (Chair)
George Krithis
David Murray
Steve Rothfield
Emma Woolley

Audit and Risk Committee

Brent Simonis (Chair)
Chris Arnold
Steven Bradbury
Ryan Dummitt
Hayden Raysmith AM
Steve Rothfield
John Symons
Casey Tan

Finance and Investment Committee

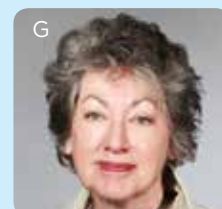
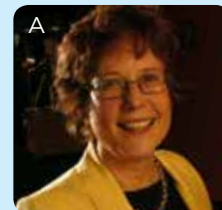
George Krithis (Chair)
Sue Dahn
Michael Gilmore
Tristan Lloyd
Casey Tan

Professional Advisers and Development Committee

Emma Woolley (Chair)
Peter Bell
Chris Boag
Simon Briggs
Will Fowles
Daniel Kelliher
Roy Leech
Larisa Moran
Sarah Robinson
Mark Stokes

Grants Committee

David Murray (Chair)
Jo Grigg
David Imber
Pamela McLure
Alistair Webster





Not just words

Strategic Advisers Group (SAG)

SAG's role is to provide a point of continuity between the original founders of the community foundation and its current leadership, to endorse the original vision of the community foundation, to provide connections, and to be part of the knowledge hub and intellectual and corporate history of Australian Communities Foundation. Its members are:

Chris Arnold
David Gibbs
Greg Larsen
Hayden Raysmith AM
Marion Webster OAM

Ambassadors

Since 2005, ambassadors have been chosen to help raise the Foundation's profile. We are very privileged that a number of Board members agree to become ambassadors on their retirement as directors. They are committed advocates for the Foundation and their support is valued.

Michael Andrew
Chris Arnold
Clare Cannon
Reverend Tim Costello AO
Carol des Cognets
David I Gibbs
Peter Griffin AM
Janine Kirk AM
Ellen Koshland
Greg Larsen
Karen Mahlab
Louise Myer
Elizabeth Proust AO
Hayden Raysmith AM
Jill Reichstein OAM
Fiona Smith

Staff

Clare Brooks, Chief Executive Officer
Andrea Heffernan, General Manager
Rebekah Lautman, Philanthropy Manager
Leonie Mugavin, Grants Officer
Christine Selle, Administration Officer
Raz Babic, Casual Administration Support

Philanthropy Consulting Service

Trudy Wyse, Marion Webster OAM

Professional services

Legal:	Herbert Smith Freehills
Audit:	KPMG
Investment Adviser:	Beulah Capital Pty Ltd JBWere (July 2013)
Accountant:	Marin Accountants
Sub-fund Registry Services:	Computershare Services

When I think about it, I have been involved in the world of philanthropy for more than 25 years.

It all began in 1988 when I was engaged in a joint venture between the Victorian Government and the Victorian Women's Trust to administer a micro-business loans scheme and develop a business support initiative called Women's Enterprise Connection.

A few years later, in 1991, I was fortunate to be a recipient of philanthropic grant when I was awarded a Winston Churchill Memorial Trust Fellowship to study community development financing innovations in a number of disadvantaged community settings. Then again in 1993, I was awarded a place by the Hugh Williamson Foundation in the Victorian Community Leadership Program, now known as Leadership Victoria.

These experiences were all life changing and it is no wonder that philanthropy continues to be an important aspect of my professional and my personal life today.

As a Partner with Pitcher Partners Melbourne, I act as investment adviser to numerous charitable foundations, public ancillary funds and private ancillary funds. However I have also found other roles: as a Board Member of Australian Communities Foundation; as a steward of the ACF Mission; as a volunteer; as a committee member; and as an advocate, where my job is to act as steward of the ACF mission of accessible, engaged, community building philanthropy for all. I am a volunteer Investment Committee Member on an educational charitable foundation and an advocate for charitable foundations through membership of the Australian Institute of Company Directors' Victorian Not For Profit Committee. My engagement in philanthropy also extends to being an educator and course leader for Philanthropy Australia where I presented their governance program in 2013.

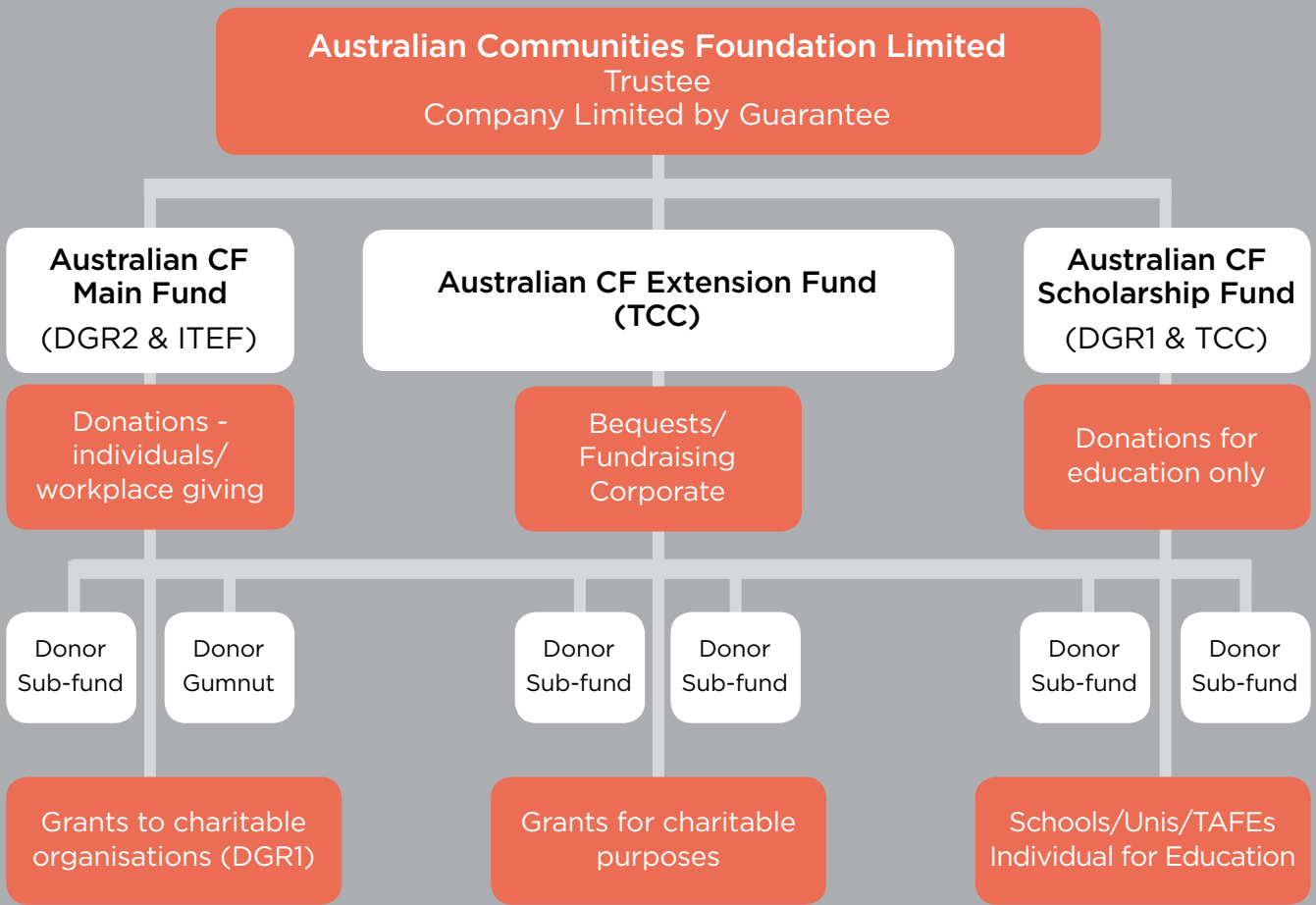
I have also laid plans to carry my philanthropy into the future: as philanthropic principal in establishing both a sub-fund and a Gumnut Account with Australian Communities Foundation.

Philanthropy provided me with some extraordinary opportunities early in my life. It is therefore a great pleasure to be able to both give back to the sector - and pay forward to the next generation of philanthropic recipients. They will, I am confident, continue the philanthropic journey themselves to create better community futures.

I warmly encourage people new to philanthropy to get involved. But be warned, it's infectious!

Sue Dahn

Giving a voice to many



Australian Communities Foundation Limited operates three charitable trust funds and provides opportunities for donors of all styles to give voice to their philanthropy through our giving vehicles, tools, services and expertise.

Australian Communities Foundation Fund

This fund is a public ancillary fund endorsed as a Deductible Gift Recipient (DGR), and an Income Tax Exempt Fund (ITEF). Most sub-funds and Gumnut Accounts are established in this fund because individuals can claim a tax deduction for their donation. Companies’ workplace giving contributions are placed in this fund, which gives an automatic tax deduction for employees. All grants from the fund must be made to Item 1 DGR charities.

Australian Communities Foundation Extension Fund

The Australian Communities Foundation Extension Fund is endorsed as a Tax Concession Charity (TCC). Donations are non-tax deductible. Types of donations made to this fund are

bequests, fundraising and sponsorships where a tax deduction is not eligible. Granting from this fund can be made to organisations and individuals for charitable purposes.

Australian Communities Foundation Scholarship Fund

The Scholarship Fund is a public fund for the provision of educational scholarships, prizes and bursaries. It is endorsed as an Item 1 DGR and donations are tax deductible.



Planning your giving

From making a donation to creating a legacy, Australian Communities Foundation offers people from all walks of life an accessible, easy and satisfying way of giving something of real value back to the communities that they care about.

We offer an extensive range of products and services to help donors create effective giving plans. Donors have access to a network of likeminded people, extensive grantmaking skills and opportunities to engage in educative forums. We also offer one of the best and easiest ways of establishing a perpetual source of giving.

Sub-funds

Donors can set up a sub-fund with a minimum \$20,000 initial donation. They can be established in any of ACF's trust funds, depending on whether a donor wants a tax-deductible or a non tax-deductible vehicle.

Gumnut Accounts

Gumnut Accounts make philanthropy accessible to everyone. They are philanthropic savings accounts donors can establish with regular \$2,000 a year minimum contributions.

Supporting foundations

A supporting foundation can be started with a minimum of \$1 million. These are separate public funds under the Australian Communities Foundation Trustee.

Corporate sub-funds and workplace giving

Business and organisations can establish branded charitable sub-funds, giving their employees a chance to make pre-tax contributions to a charitable cause. By removing the administrative burden we help businesses and their staff make the most of their philanthropic dollars.

Bequests

Australian Communities Foundation can work with donors and their lawyers to create estate-planning strategies that will preserve charitable legacies beyond people's lifetime.

Donations

Tax-deductible donations can be made to Australian Communities Foundation. All grants made from this fund are determined by the Board and generally directed to the Foundation's strategic initiatives.

Online giving

Australian Communities Foundation has three ways to help donors give and track donations online.

Donor Central

Donor Central is Australian Communities Foundation's online resource centre for donors. It provides donors with access to a funding request directory, upcoming events, recent grantmaking activity, all donor forms and an online donation facility

Donations gateway

The online donations portal accepts credit card, EFT, Bpay and cheques. Cash donations can also be made via Australia Post Billpay. The donations portal produces electronic receipts.

Sub-funds Online

The web portal gives donors individual secure access to financial transactions, such as donations and grants, as well as investments details and sub-fund balances.

Ballarat Region Treegrowers in Sri Lanka filming people working on analogue forestry



Talk the talk

Ellen Koshland has been part of Melbourne and Australian life since the 1970s, when she first arrived from the USA. A long-standing advocate of young people and their great talents, among her many interests - which include the arts, education, citizenship and policy debate - she has supported a variety of education programmes as well as advocated strongly for greater community support and equity in public education.

A founder of the Education Foundation in 1989 (which has since joined forces with the Foundation for Young Australians), in 2005 she became an Ambassador for Australian Communities Foundation and subsequently established a sub-fund, the Koshland Innovation Fund.

Involved for many years with Melbourne Writers Festival, last year saw her deepen her links with another literary enterprise, the Stella Prize, a major new award to encourage and celebrate the writing of Australian women authors, Ellen explains: "All countries have a public imagination: a set of stories by which they know themselves. In Australia, for a whole raft of reasons, those stories have been largely male... I see the Stella Prize not as countering this, but as an opportunity to amplify it, to add and to fill out the picture, so that we have a much richer, fuller and more representative Australian story to be shared among us as we go forward."

Ellen believes passionately that philanthropy has a key responsibility to build enduring change, beyond short cycles of elections and shifts in corporate areas of attention.

This is a topic she explored further during the Foundation's Ambassadors for Philanthropy 2013 Tour, where she spoke on a panel at an event hosted by the Macquarie Group in Melbourne with Simon McKeon AO.

Having a sub-fund
allows me to work
with others to have a
cumulative impact.

2013 Stella Prize Winner, Carrie Tiffany. Photographer Stewart Thorn.



Collective voices

One of the many ways the Foundation helps build healthy and resilient communities is by providing opportunities for its donors to connect with each other to hear about emerging issues and current trends. Each year the Foundation hosts a range of events and activities for our community of donors to inspire and encourage philanthropy and promote engagement with the issues they are passionate about.

Through our ongoing Environment and Indigenous Donors Circles, interested donors are able to explore different approaches for achieving impact and share best practice in areas of high need. Over the past year expert speakers from the community sector have helped donors enhance their understanding of, and find innovative solutions for, a range of initiatives from strategies for effective granting in climate change to transition to school projects for Aboriginal and Torres Strait Islander children.

A growing number of sub-funds are also dedicated to collective giving to make positive change with their philanthropy. For example, the Impact100 WA and Impact100 Melbourne sub-funds are based on a model from the USA which seeks 100 donors to contribute \$1,000 annually. Through the pooling of its resources, the Foundation sub-funds distribute one significant grant of up to \$100,000 each year

to a local organisation or community project.

The Foundation also supported its first Indigenous Giving Circle. Funds were pooled to create real impact for Aboriginal and Torres Strait Islander people. As well as grants from the Foundation, this group has commenced contributing their own time and skills. Collective giving was also enabled through supporting The Funding Network in the 2013 pilot events in Sydney, Melbourne and Perth. This provided donors and the wider philanthropic community with a fun and engaging opportunity to support new initiatives.

Savvy Giving - The Art and Science of Philanthropy

To inspire new donors and philanthropy in general, the Australian Communities Foundation commissioned a book to provide practical advice and explore the bigger picture of strategic giving. Through support from the Hartline Fund, *Savvy Giving - The Art and Science of Philanthropy* was written by Genevieve Timmons to make charitable giving easy, accessible and rewarding. The book provides a step-by-step comprehensive guide to achieving an enduring impact. It shows how philanthropic dollars, when strategically spent, can generate great outcomes for the social landscape you care about. Copies of the book, published by Hardie Grant Books, are available for purchase from the Foundation's website.

Sub-funds

Fund Name	Special Interest
Abbotsford Convent Fund	Arts, cultural and charitable purposes.
Aboriginal Student Bursaries Fund	Indigenous student bursaries.
Agnes Robertson Fund	Aged care, medical research, the arts and education.
Alf & Meg Steel Fund	Health and medical related causes, especially for the aged. Children both in Australia and overseas, gardening, the environment and Indigenous Australians.
Alice Sloan Fund	To provide financial and in-kind support as well as encouragement to enable young people to participate in varied pursuits, including sport, dance, music, art and outdoor education.
Alison Patrick Memorial Fund	To support graduate historical research in the broad area of French revolutionary history and also projects which focus on environmental issues.
Allaway Lancashire Fund	Support for social justice, ethical and environmental education and protection of cultural and natural heritage.
Anna Wearne Fund	To create opportunities for young people to reach their potential, where such potential is hampered due to disadvantage. The objectives of the sub-fund concern education, Indigenous people, leadership and women's rights.
Annamila Fund	General charitable purposes.
Annette Lowe Fund	General charitable purposes.
Antoinette and John Richardson Memorial Fund	Specific organisations, including Swinburne University, Victorian College of the Arts and St Francis Choir.
Apollo Fund	Education and profound hearing loss.
APT Conservation And Charitable Fund	To support processes, events and activities that resolve problems to make a positive and measurable difference to selected causes.
Ardoch Future Fund	Making education a reality for young people, including those experiencing homelessness and disadvantage.
Ashworth Family Fund	Medical research.
Assia Altman Fund	International development, animal welfare and protection and social entrepreneurship.
Australian Disability and Indigenous Peoples' Education Fund (ADIPEF)	To support opportunities for lifelong learning for people with disabilities from Indigenous and non-Indigenous backgrounds, from pre-primary to post tertiary.
Avalon Circle	Mental illness, disability (intellectual, physical, sensory), homelessness, drug and alcohol dependency and victims of abuse.
B B & A Miller Fund	Aboriginal education and health, disability, education, environment, medical research, mental health, youth suicide, drugs and addictions, disadvantage, developing countries and humanitarian crises.



Weenthunga Health Network at the Funding Network launch, Melbourne

Fund Name	Special Interest
Baird Family Fund	Meeting the needs of the intellectually disabled and their families.
Ballandry Fund	General charitable purposes.
Beecher Family Charitable Fund	General charitable purposes.
Bell Family Fund	Social justice, animal welfare and medical research.
Beltana Fund	Project which support the environment, education, homelessness and health care specialised needs.
Betty Fulton Fund	To assist families and individuals to pursue educational opportunities that they may not have had the chance to because of disadvantage. This may include primary, secondary, tertiary and vocational education.
Beyond Me	To encourage the young (and young at heart) not to just be average but use their talents to identify problems, explore pathways and participate in projects providing solutions to humanity's problems.
Biggin & Scott Fund	To take an active involvement in the local community needs in the suburbs where Biggin & Scott offices are located and offering property, auctioneering and marketing skills where appropriate.
Bridging Opportunities	General charitable purposes, with a particular passion for projects that work with, support and empower asylum seekers, refugees and women.
Charles D'Aprano Award Fund	To provide funding for an annual scholarship awarded through Swinburne University of Technology to a student who wishes to extend and further their Italian related studies in Italy.
Charles David Fund	Social equity and holocaust studies.
Chaskett Fund	Support for rare book purchases for Melbourne libraries, especially the State Library of Victoria and support for bibliographical scholarship.
Cherie Millar Education Fund	Education, the arts and health in the LaTrobe Valley region.
Clack Family Memorial Fund	General charitable purposes, in particular to fund innovative programs in media and the arts.
Clare Murphy Fund	General charitable purposes.
Clemenger Staff Fund	Each state office has a different focus for grantmaking, from young people at risk to literacy and capacity development.
Clemenger Staff Fund (National)	Each state office has a different focus for grantmaking, from young people at risk to literacy and capacity development.
Connie & Craig Kimberley Fund	General charitable purposes.
Coronella Fund	Parent education, refugees, Indigenous education, environment and Bill of Rights (policy).
Curlew Fund	Conservation and Indigenous conservation issues.

Giving opportunities

The Omi-Albers fund was established in 2006, primarily to support programs which improve the lives of refugees and young people and projects which bring about social change with a focus on human rights. As the funds to establish the Omi-Albers sub-fund came from WW2 reparations made to survivors and their relatives, the focus on refugees and human rights is very personal for the donors.

A number of small, thoughtful grants have been made to marginalised communities and causes which have limited financial support and, often, limited community support. As the donor says,

We have been involved in philanthropy and social change projects for a while now. Whilst the funding pool is not huge we make an effort to recommend projects for funding that we feel act as "acupuncture points" in the issues to make a small but significant change. I must say that Australian Communities Foundation really assists us by sourcing then feeding through projects they think we'll like.

The first grant in 2007 was to Victorian Arabic Social Services, a not-for-profit community organisation that provides support, information, education and settlement support programs to disadvantaged and socially isolated members of

the Arabic speaking community, for the Anti Racism Action Band (A.R.A.B.)

The most recent grant was to support a research project examining the impact on health care professionals caring for asylum seekers in Australia's offshore detention centres.

In-between, Omi-Albers has supported a number of projects including:

- Foundation House - Victorian Foundation for Survivors of Torture
- Brotherhood of St Laurence for a program to support Sudanese women settling into a new community
- Mental Health Research Institute for a research project which investigated mental health issues amongst the refugee population
- Flemington and Kensington Community Legal Centre supporting young men of African descent who contend they have been subjected to policing interventions because of their race rather than criminality
- The Fellowship for Indigenous Leadership

The Omi-Albers sub-fund grants are small (under \$5,000), but it often supports projects with other Australian Communities Foundation sub-funds, giving a greater voice to those in the community in need, as well as enabling social change.

Sub-funds

Fund Name	Special Interest
Dara Fund No. 2 David Boykett Tall Ships Voyaging Fund	General charitable purposes. To develop life and leadership skills for Australian youth through the experience of voyages on tall ships.
David Jolley Leadership Award	To acknowledge and promote excellence and leadership in human services with a focus on tertiary social work education at La Trobe University across metropolitan and regional Victoria.
DDJE Fund Dennoch Fund	General charitable purpose with interest in education. To empower disadvantaged people to achieve things they otherwise couldn't, primarily through support for social enterprises which provide training/employment/business skills and opportunities as a means of building their independence and self respect.
Digger & Shirley Martin Environment Fund Dina Grollo Community Fund DISCAL Fund Dominic Gianni Fund Dubsky Family Fund Dumbarton Fund	The environment and conservation. Youth education, employment and homelessness in the areas in which Grocon works. Disability and community advocacy. To enhance the lives of children with a disability. Overseas aid, disadvantaged youth, education, the elderly and the arts. Micro credit, water projects in developing countries, education for girls in Australia, housing and homelessness services and disadvantage in Gisborne region.
EastWeb Fund	Combating disadvantage and building community capacity amongst Victoria's Indigenous, asylum seeker and refugee communities.
Elizabeth Eggelston Fund EM Horton Family Fund	Aboriginal law issues. General charitable purposes with a focus on Indigenous issues, the environment, refugees and human rights.
Enviro Warriors	Environmental projects and education within Australia and in developing countries. Projects focusing on Indigenous cultures and their ecological knowledge.
Equal Access Fund	General charitable purposes, in particular improving literacy for Australians as a means of addressing systemic and intergenerational disadvantage.
Espero Fund	To improve society in a small way by supporting a number of charitable causes, in particular programs which focus of community advocacy, overseas development, improving educational opportunities and medical research. Espero (meaning Hope) was chosen to reflect the Fund's vision for positive change in the local and wider communities.
Fairer Futures Fund	Indigenous affairs, disadvantaged womens development in Australia and overseas,



Flemington and Kensington Community Legal Centre's discrimination case in the Federal Court

Fund Name	Special Interest
Fairness Fund	environment, education and a good start for disadvantaged groups. Projects supporting education and employment, particularly for Indigenous youth and women.
Family Life Futures for Children Fund	To support Family Life programs and activities.
Fellowship for Indigenous Leadership Fund	Indigenous leadership and associated areas.
FGM Charitable Fund	General charitable purposes.
Finch Fund	General charitable purposes.
Geddes Nairn Development Fund	Capacity building for development partnerships in China, microfinance capacity building, refugee support especially in Australia, Oxfam Australia projects, especially in relation to China.
Geostudies Fund	General charitable purposes, with interest in the environment.
Glenorchy Community Fund	Projects/programs that support the Tasmanian community of Glenorchy.
Global Gardens of Peace	To support the vision of Global Gardens of Peace to create peaceful, safe and serene environments where children and their families can come together to play, rest, heal and interact.
Global Leadership Fund	To develop leadership within communities.
Greg Larsen Family Fund	Education to the disadvantaged in overseas countries and homelessness in Melbourne.
Grieve Family Fund	Social justice, especially with children, and environmental issues.
Grigg Family Fund	Education, health, the environment and social justice, with a focus on homeless people, refugees, Indigenous Australians, women and families.
Grummitt Family Fund	Cancer, heart disease, aged care and health facilities. Community causes, education facilities and a special interest in needs within the Goulburn Valley.
Guddaa Fund	General charitable purposes.
Hamer Family Fund	Focus on the performing arts, especially music, innovation in care for the environment, opportunities for talented young people and projects that forward good government in Australia.
Hart Line Fund	General charitable purposes, principally in the areas of education, the arts and the environment.
Hazel Rowley Literary Fund	Biographers, writers, lectures / presenters on writing experiences.
Heather Watkins Memorial Fund	To assist families, especially those with young and teenage children, affected by suicide. In particular, support for the Jesuit Social Services Support after Suicide program.
Henkell Family Fund	Emphasis on the vocal arts, in particular opera, as well as supporting the

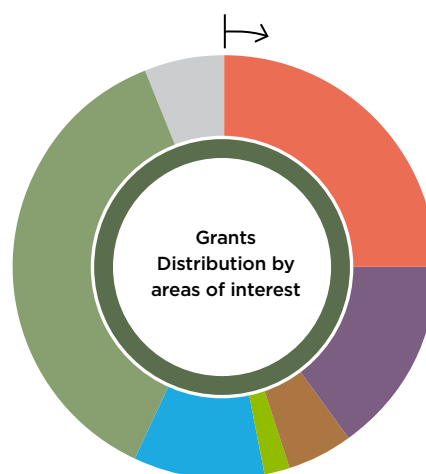
Planning to give

Australian Communities Foundation's grants program for 2012-13 again set a new record for distributions and total number of grants made. The Foundation made 430 grants totalling approximately \$7 million across Australia and internationally, up from \$3.8 million the previous year.

Grants were actively supporting programs, projects and organisations undertaking work in education, environment, health, arts and culture, community development, advocacy and service delivery. These grants have given donors the ability to deliver effective and tailored responses to a range of social and environmental issues confronting communities everywhere.

This year we saw several large distributions. These grants were strategically targeted to strengthen organisational capacity and the work undertaken by a number of not-for-profits. Other grants also provided flexible funding to the charitable sector with 29% of all the Foundation's grants targeted towards the principle activities or general operations of organisations.

General support grants help good work take place where it's needed. Please see the grants booklet for a full list of this year's grants.



Arts and Culture	25%
Community Development	15%
Community Services	5%
Disability	2%
Education and Training	10%
Environment	37%
Medical	6%
Total	100%

Sub-funds

Fund Name	Special Interest
Henry Stein Fund	German-Australian community.
Herbert and Inge Littauer Fund	Projects which increase access to and participation in the community by adults with autism, intellectual or profound disabilities. Priority given to women, Indigenous people and those from a culturally and linguistically diverse background.
Hobsons Bay Community Fund	Refugees, aged care, language and resettlement projects, health and cancer research and support, innovation and entrepreneurship, theatre, arts and music, Jewish community support and language and learning.
Holding Redlich Social Justice Fund	General charitable purposes within Hobsons Bay municipality.
Hopetoun Fund	To promote social justice in the community, with a focus on assisting disadvantaged young people with education, training, employment and health.
Howard McGeary Charitable Fund	General charitable purposes.
Howard Nathan Fund	Support for adults and children with physical and intellectual disabilities; the homeless and disadvantaged in the community. Care and protection of the environment/conservation and animals.
Humphries Family Fund	Jewish culture, education and homelessness.
IM and SK Families Fund	General charitable purposes.
Impact100 Melbourne	General charitable purposes.
Impact100 WA	To support multiculturalism in Melbourne.
Impact Collective	To make high impact grants to charitable causes in WA.
Initiate Action Community Fund	General charitable purposes.
IRIS Fund	Education, girls and women in Melbourne's western suburbs.
Isabella and Marcus Paediatric Brainstem Tumour Fund	Gay and lesbian charities and community organisations.
James Family Fund	Research into paediatric brainstem tumours with a focus on Diffuse Intrinsic Pontine Glioma.
James Gilbert Fund	Early childhood, youth at risk, homelessness, international poverty and aid.
Jean Vincent Fund	General charitable purposes.
Jenni Chandler Fund	General charitable purposes.
Joan & David Harper McLennan Fund	General environmental issues.
John and Eileen Clark Family Fund	Social justice.
John Cummins Memorial Fund	General charitable purposes.
	Support for brain tumour patients linked to Austin Hospital and educational opportunities for young people experiencing disadvantage in Melbourne's northern suburbs.

In 2012-13, the key areas of interest in the grantmaking program remained similar to previous years. For example, 24% or over 100 individual grants supported education, employment and training initiatives and 69 grants targeted community development and advocacy.

The Foundation is pleased to report that grants targeting the environment increased to 37% of the total dollar distribution, and arts and culture rose to 25%.

In its second year of becoming a national organisation, grants continue to reach across Australia and internationally. With 51% of grants targeting national projects, Australian Communities Foundation has helped fund innovative solutions to address persistent and entrenched issues across a wide geographic reach. The Foundation also continued its strong support for its traditional base with 39% of all grants in Greater Melbourne and Victoria.

Of particular benefit have been our geographic sub-funds, Impact100 WA and the Glenorchy Community Fund in Tasmania, as well as The Funding Network grants which have extended our knowledge and increased our granting across Australia.

430 grants were made this year. The grants are varied, with the majority under \$10,000. Our smallest grant remained at \$500

with our largest grant a record \$1 million.

Including the 2012-13 grants, the Foundation has distributed over \$28 million since its inception in 1997.

Australian National Development Index – Australian Communities Foundation’s new partnership

Since becoming a national organisation in July 2011, the Foundation has sought to build partnerships and collaborations to meet the needs of diverse communities across Australia. The Australian National Developmental Index (ANDI) has provided a wonderful opportunity to do this.

This major initiative aims to create a new national model of progress, moving from one which focuses solely on increasing economic production and wealth, to one which tracks progress towards equitable and sustainable wellbeing for all Australians.

The information gathered will help the Foundation identify key issues and areas of need.

Australian Communities Foundation is currently developing a partnership with ANDI to assist it scale up its activities. Utilising the Foundation’s expertise and experience, it will work with ANDI to increase its profile and the resources needed to commence the community consultation component of the Index across Australia.

Fund Name	Special Interest
Johnstone Gumption Fund	Environment, open spaces, regional botanical gardens. Projects that support citizenship and community. Health and quality outcomes for patients.
Joy Mavis Schwartz-Seidler Musical Scholarship	Musical scholarship to students from Glossop High School in South Australia who have 1-2 years formal training and show musical growth potential.
Juliet Allen Fund	General charitable purposes.
June Shenfield Poetry Award Fund	An annual award to commemorate June Shenfield, designed to encourage Swinburne University students to write and become interested in publishing and reading poetry.
Katrina’s Sparkle Fund	Safety and wellbeing of children and babies, social justice and fairness, family harmony and cohesion, educational opportunities for young people to maximise their potential especially through travel, and health issues.
Keith & Jeannette Ince Fund	Environment and threatened species, education for disadvantaged children, assisting Indigenous communities and early childhood development.
Kirkham Family Fund	Music and theatre, with emphasis on young artists and small theatre companies, and the environment and animal welfare.
Kokopelli Knights Fund	To bring joy to children with life threatening diseases who need inspiration and happiness.
Koshland Innovation Fund	The Koshland Innovation Fund supports initiatives to contribute to learning, democracy, and ideas.
Kristian Fredrikson Scholarship	Arts theatrical design/makers.
Leosia	To support grassroots and holistic Indigenous organisations that focus on empowerment and self-determination. The sub-fund aims to support programs that provide meaningful and sustainable training, education and employment pathways for Indigenous peoples.
M & L Attwood Fund	Support for organisations in the Goulburn Valley area extending to rural areas throughout the State. This includes organisations involved in mental health, disability, disadvantaged young people, environment, Aboriginal health and education and arts.
m.a.d.woman	General charitable purposes.
Macmar Fund	Supporting primary school education opportunities
MacroMelbourne Community Fund	To generate and distribute philanthropic resources to address social issues in the communities.
Malcolm Broomhead	General charitable purposes.
Mansfield Community Fund	For the support and development of the Mansfield community and surrounds.
Martin Family Fund	General charitable purposes.
Matt & Clare Handbury Fund	Mental health, drug and alcohol treatment, and personal and community connection.
Maureen Considine Fund	To support the ongoing operation of permanent accommodation for adults with an

Twenty different voices. One consistent story.

Twenty years ago, on 1 March 1993, the Disability Discrimination Act (DDA) came into effect. It made disability discrimination unlawful, improving the lives of people with a disability across Australia.

To celebrate the Disability Discrimination Act's 20th birthday, the Australian Human Rights Commission's Disability Discrimination Commissioner Graeme Innes AM, in partnership with the Sydney Community Foundation, developed the Twenty Years: Twenty Stories project.

The Twenty Years: Twenty Stories short films project tells the stories of 20 people who have used the Disability Discrimination Act to change the lives of many. It acknowledges the progress of disability rights in Australia and encourages greater participation in disability issues.

Through Australian Communities Foundation, the Paterson Family Fund has supported four of these inspiring stories.

Hot Tutti is a documentary about a five young women in the girl act, Hot Tutti. Each singer has a disability. But, while working with a team can be tough, their disabilities have in many ways brought them closer together.

The Rockwheelers describes how, since taking up wheelchair basketball, former self-confessed book-worm Paul Gooda hasn't considered going back to his reclusive life. Inclusion is what the DDA was designed for. All Paul needed was a team to call his own.

Room for Change documents how Stella Young and Madeleine Sobb have fought for their fashion in very different ways and both have won.

Dee's Place is a documentary about the changes to Dee Holmes life when she decided to live independently from her family.

Twenty years on and we now have DisabilityCare Australia, Australia's national disability insurance scheme launched in March 2013. The scheme will enable a new way of providing community linking and individualised support for people with permanent and significant disability, their families and carers.

Sub-funds

Fund Type	Fund Name	Special Interest
	Mayer Morris Family Fund	intellectual disability in the Diocese of Sandhurst.
	McGregor Family Fund	Aboriginal Australians, refugees living in Australia and residents of Timor Leste.
	Melanie Holden Memorial Sub Fund	General charitable purposes with an emphasis on education for the disadvantaged.
	Melliodora Fund	To financially assist a young cancer sufferer's attendance at the Gawler Foundation.
	Metta Fund	Ecological sustainability, environmental advocacy and nature conservation.
	N E Renton Family Fund	General charitable purposes.
	Nash Family Fund	Children with mental health issues.
	New Idea Breast Cancer Fund	General charitable purposes.
	Nicholas R Taylor Fund	Community support for women with breast cancer and research into causes and cures.
	Omi-Albers Fund	The environment, migrants and Indigenous Australians.
	P J & J P Murphy Fund	Refugees, children and youth, social change and human rights.
	Palliative Care Victoria	General charitable purposes.
	Paterson Family Fund	To benefit palliative care in Victoria, and the work of Palliative Care Victoria.
	Pharmore Charitable Fund	Assistance to small groups without a voice, particularly people with disabilities.
	Phyllis Budd Fund	Community support, children and youth, environment, health and family support and aged care.
	Pomegranate Fund	Support for second and third year apprentice chefs who might be disadvantaged through financial or family circumstances.
	Quercus Fund	Health, education and community development.
	Ralph & Betty Sims Fund	To support a variety of community initiatives.
	Rana and Alan Fund	To support a range of charitable organisations.
	RO Fund	Overseas aid, especially in helping communities become self sufficient. The environment, Indigenous programs, refugees, health and human rights.
	Robert Connor Dawes Fund	General charitable purposes.
	Rod and Pamela Wells Community Fund	In memory of Robert Connor Dawes who died when he was 18 from a brain tumour.
	Ron Castan Education Fund	General charitable purposes.
	Ronald and Mary Henderson Fund	Education, social justice, Indigenous, minority and refugee issues, human rights/civil liberties.
	Running Waters Fund	Socio-economic research to tackle poverty Australia wide, particularly in Melbourne and rural areas.
		Urban ecological sustainability, social justice and nature conservation, particularly through advocacy and community development.



Graeme Innes V Railcorp - one of the inspiring stories on film created for the Twenty Years: Twenty Stories project

Fund Type	Fund Name	Special Interest
Rysz Gancewicz and Fabig Family Fund S&G NCF		General charitable purposes. General charitable purposes, to include social research, advocacy for disenfranchised persons with an emphasis on social justice.
Sally Browne Fund		Melbourne's Royal Botanic Gardens, the School of Botany at Melbourne University and motor neurone disease.
Sally Isaac Memorial Scholarship Fund		To create educational opportunities for young women aged 35 or younger who make a significant contribution to the community in fields of local government, social justice, aboriginal affairs (including reconciliation), arts and music, community health, CALD.
Sally Oatley Memorial Fund		To support initiatives in charitable areas, in mental health services, research, education and training, with emphasis on young people and families. Creative projects in developing communities, focussing on children and young people.
Scarlet's Fund Sharman Mitzvah Fund Silver Gold Fund Slater & Gordon Asbestos Research Fund		Education. General charitable purposes, in particular education and the combating of disadvantage. To fund and support medical research to find a cure for asbestos related disease, particularly mesothelioma. To support the sharing of information amongst health professionals with respect to the prevention and treatment of asbestos related diseases.
Slater & Gordon Community Fund		General charitable purposes, to include social research, advocacy for disenfranchised persons with an emphasis on social justice.
Social Justice Fund		To contribute to the promotion of social and economic justice in Australia and in the developing countries of Africa, Asia, Latin America and the Pacific.
Spend It Well Fund		Projects in East Timor, such as building schools to assist rebuild the nation's education infrastructure.
St Mark's Anglican Church Fitzroy Choral Scholarship Fund		To encourage and support the practice, performance and development of sacred choral music at St Marks Anglican Church, Fitzroy, through the granting of one or more annual scholarships for St Mark's Anglican Church Fitzroy Choral Scholars.
Steve Lawrence Social Innovation Fund		To support the creation of new services in Australia that enable citizens and organisations to better solve social problems.
Story Street Fund		Support for international education and basic health, Melbourne refugee organisations and human rights/public law organisations.
Strike a Light Fund Stubbs and White Charitable Fund		General charitable purposes. MS, cerebral palsy, disadvantaged in Melbourne CBD.

Become part of the discussion

In 2012-13 a number of sub-funds very generously supported The Climate Institute. Collectively the Australian Communities Foundation funding for the organisation culminated in the largest grants ever made by the Foundation.

The journey from 2005 to today has not always been a smooth one when it comes to finding solutions needed to address climate change. The coming years look, if anything, even more uncertain. As an independent research and communications organisation, one of the Institute's greatest assets to help deal with this ongoing uncertainty is its flexibility and adaptability.

This independence has enabled it to respond quickly to emerging issues and opportunities to forge strong partnerships with businesses, community organisations and governments, and undertake ground-breaking projects looking to open up new pathways to a zero-carbon future.

The grants themselves were primarily provided as core funding, which gives the Institute the flexibility to focus efforts where it can be most effective. It allows the organisation to build on a number of key areas of work, including its Global Climate Leadership Review 2013 - Low Carbon Competitive Index with GE, as well as develop Climate of the Nation - attitudinal research which has revealed a climate debate emerging from the shadows of the carbon tax. Further analysis



The Climate Institute and clean energy job creation

of infrastructure's readiness for extreme weather has been another leading initiative.

Sub-funds

Fund Name	Special Interest
Sunning Hill Fund	To enhance education and training opportunities for Aboriginal people in the Northern Territory and Kimberley.
Sunshine and Crocodile Fund	General charitable purposes but with particular interest in Indigenous communities and capacity building projects in Sri Lanka.
Tan Family Fund	Aboriginal issues and advocacy.
The Clements Fund	To support the Gawler Foundation's Life for Living program and the program and the renal cell carcinoma research program at the Austin Hospital.
Theresia Uehlin Fund	Tertiary Indigenous education.
Thomas Family Fund	To support alleviation of poverty and hardship, particularly in Melbourne, and to support the arts, particularly ballet and the visual arts.
Thu Giang Nguyen Fund	An annual science prize to a student at Melbourne Girls' College and a scholarship to an Indigenous student in the Goulburn Valley.
Together We Learn	Education, training and employment and community development for Indigenous, disadvantaged and those experiencing rural isolation.
Towards a Just Society Fund	To assist in the reduction of current injustices affecting particular groups and individuals, currently with emphasis on Indigenous education/capacity building.
Trikojus Education Fund	Scholarships to disadvantaged and gifted children in government schools.
Turning Point Charitable Fund	General charitable purposes with particular emphasis on the alcohol and drug sector.
Unico Community Fund	Support for social and community disadvantage, the environment and the arts.
Vicki Standish Family Fund	To support the well being of children and young people and to assist them to reach their potential.
Vilde Family Fund	Environment and animal welfare issues.
Webb Family Fund	Support of Spend it Well school building projects in East Timor.
Wellington Community Fund	Civic purposes in the Wellington Shire.
Wendy Mead Fund	General charitable purposes, in particular medical research and in support of children.
WHK Melbourne Community Investment Fund	General charitable purposes.
Williams Fund	Programs which promote social justice, Aboriginal reconciliation, and sustainability of the environment, both in Australia and overseas. Focus on education and employment for disadvantaged, affordable housing, environment and breast cancer.
Willmore Fund	Education, with focus on committed underprivileged students - including youth at risk - to attend/or continue to attend school/university/TAFE and other educational institutions.

Answering the call.

You don't have to be rich or famous to make a difference. You just have to make a decision.

At the start of 2012 Christopher and Kerri determined it was time for them to make such a decision. They borrowed a copy of Tracy Geary's book *Inspired Philanthropy: your step-by-step guide to creating a giving plan and leaving a legacy*. Together they identified a series of the exercises as an aid to clarifying their motivations and goals, and as a path to developing a more structured approach to their giving.

One of the results was the establishment of the Equal Access Fund. Christopher works in education and Kerri is a librarian. They share a passion for literacy and its fundamental role in giving individuals and communities access to so much of what many of us take for granted. The Equal Access Fund is aimed at improving literacy for Australians as a means of addressing systemic and intergenerational disadvantage.

Since its establishment the Equal Access Fund has made two modest grants:

Red Dust Role Models

Red Dust delivers health promotion programs to disadvantaged children in partnership with remote communities. Red Dust uses the enthusiasm of the kids for sport, and for meeting with high profile sports people, as a

motivation for structured classroom learning. The classroom comes first, so with the promise of sport and meeting their role models, the kids not only turn up, they are eager participants!

The Social Studio

The Social Studio is "a safe place of belonging" for people who have experienced being a refugee. The Social Studio is a fashion label, a retail outlet and a café. Each enterprise provides training, professional development and related opportunities for young people. The 2013 grant enabled the Social Studio to engage a specialist literacy tutor to work with youths from emerging migrant communities to develop literacy skills and the associated confidence and self-esteem to continue to undertake learning and development.

Christopher and Kerri are pleased with their decision to establish the Equal Access Fund, and it is meeting the objective they set themselves for more structured giving. They have this year taken another step by joining Impact100 Melbourne, a collective giving initiative that is itself a sub-fund of the Australian Communities Foundation. They now see these structured approaches as additions rather than alternatives and they happily continue to decide to respond to appeals and to give to charitable organisations as and when it seems appropriate.

Fund Name	Special Interest
With One Seed	Supporting subsistence communities in Timor Leste to make environments sustainable, to end poverty and hunger, to deliver universal education and to create global partnerships.
Worworing Fund	To support environmental integrity.
Zalewski Fund	Issues of homelessness, mental illness, human rights and post correction support, particularly impacting on women and young people.
Extension	
Carreker Community Fund	General charitable purposes.
EastWeb Fund (Extension)	Combating disadvantage and building community capacity amongst Victoria's Indigenous, asylum seeker and refugee communities.
Glenorchy Community Fund	Projects/programs that support the Tasmanian community of Glenorchy.
Global Leadership Fund	Developing leaders in communities.
Graduate Women Victoria	Scholarship fund for women in tertiary education in Victoria and scholarships for women undertaking masters and doctoral studies.
Hobsons Bay Community Fund	General charitable purposes within Hobsons Bay municipality.
Initiate Action Community Fund (Extension)	Education support, girls and women and Melbourne's western suburbs.
John Cummins Memorial Fund (Extension)	Support for brain tumor patients linked to Austin Hospital and educational opportunities for young people experiencing disadvantage in the northern suburbs.
Miller Fund	General charitable purposes.
N E Renton Bequest	Children with mental health issues.
Slater & Gordon Fund (Extension)	General charitable purposes with an emphasis on social justice.
Steve Lawrence Social Innovation Non-Tax Deductible Fund	To support the creation of new services in Australia that enable citizens and organisations to better solve social problems.
Sylvia Fisher Fund	An extended study bursary awarded to a singer for professional development.
TAJS Fund	To assist in the reduction of current injustices affecting particular groups and individuals, currently with emphasis on Indigenous education/capacity building.
Tony Adams Fund	To continue the work of Professor Tony Adams in international education by supporting activities in the areas of research, professional development and student mobility.
Wellington Community Fund	Civic purposes in the Wellington shire.
Women's Health Victoria Fund	Promoting, advocating for and supporting women's health in Victoria.
Scholarship	
Graduate Women Victoria Donors Fund	Scholarship fund for women in tertiary education in Victoria and scholarships for women undertaking undergraduate and diploma studies.

Giving advice

The Power of the Professional Adviser's Voice

Professional advisers, for many years, have played an important role in the success of Australian Communities Foundation. In turn, by partnering with the Foundation, they have been able to help clients fulfil their financial and charitable dreams and goals. As more and more Australians contribute to charity on an annual basis, charitable giving is becoming an increasingly important part of a client's overall financial plan.

As champions of community philanthropy, professional advisers have not only referred clients who have set up a sub-fund or made a planned gift, but also provided important advice whilst serving on our Board or sub-committees. Additionally they have spoken or presented on Australian Communities Foundation's behalf, hosted events or even established their own sub-funds. Or, as you can read in the profile of Pitcher Partners' Sue Dahn, it can often be a combination of several of these activities.

One highlight this year was a luncheon held at Russell Kennedy where three of our donors passionately shared their stories with over 80 advisers. Each donor emphasised their different approaches, diverse roles and the many benefits of referring donors to Australian Communities Foundation.

Another was a luncheon as part of the Ambassador Philanthropy Tour, The power of the Professional Adviser - Unleash the Philanthropist in Your Client. Our two international guests reinforced the message to advisers that they are a significant voice for encouraging philanthropy with their clients. Alisa Camplin-Warner, co-founder of Finnan's Gift, delivered a powerful and emotional talk to guests. Alisa enforced the importance of the adviser's role in standing up, being heard and taking a lead in encouraging philanthropy.

Their community of donors allows me to be with others who give - this is inspirational ... and a huge positive. The Henkell Fund.

Roberta d'Eustachio, Brett Simonis, Alisa Camplin-Warner, Kevin Murphy and Emma Woolley



Giving confidence

Australian Communities Foundation believes that strong, transparent governance policies and the implementation of a robust risk management process are the basis for the Foundation's long-term sustainability. This year the Foundation's Audit and Risk Committee has been strengthened with the appointment of a new Chair, Brent Simonis of Ernst & Young, and recruitment of new members.

The Committee has bedded down an annual work program which includes updating the Risk Management framework and confirming a process for annual implementation and reporting. The Risk Management process has been developed to involve the whole of the organisation. Each sub-committee will be responsible for evaluating and mitigating risks and regularly reporting to the Audit and Risk Committee on its work plans as well as any new or emerging risks. The Committee will manage and oversee the work plans and report quarterly to the Board, including a heat map for ongoing review.

Complementary to this comprehensive review, the Foundation also took stock of standards for community foundations overseas, to support best practices and the Risk Management framework. Twenty standards for Australian Communities Foundation have been identified and the self-accreditation process will be completed in 2013-14.

Giving recommendations

Australian Communities Foundation's philanthropy consulting service continued its operations in 2012-13. Locally some of the clients included Ovarian Cancer Australia, Women's Health Victoria, Freemasons Victoria and the Reach Foundation. Internationally, the Community Foundation of Singapore visited Melbourne for a few days where both the the Foundation office and consulting staff were able to exchange expertise and experiences.

Australian Communities Foundation is very proud of the work undertaken by Trudy Wyse and Marion Webster, the two principals who have a long association with the Foundation. Their many years' experience in the philanthropic, government and community sectors and their competence and expertise to be able to undertake a wide scope of projects has certainly supported the Foundation and its mission.

Don Cullen - Tibetan Village Project Australia



Financial Report

The assets of Australian Communities Foundation, Australian Communities Foundation Extension Fund and the Australian Communities Foundation Scholarship Fund, are held in the name of the trustee company, Australian Communities Foundation Limited.

Investment Management

All investment decisions in relation to Australian Communities Foundation's Trust Funds are the legal responsibility of the Trustee, through the Board. These investment decisions are dealt with by the Board's Finance and Investment Committee, which is responsible for the design and execution of the asset allocation strategy and related investment activities.

Formal reviews of the key investment strategy components are undertaken annually. During 2012-13 ACF's investment strategy has evolved towards a more streamlined and passive investment approach, thus reducing the overall portfolio volatility and the risk of significant underperformance against underlying long term growth based benchmarks. This has been achieved with a slightly more defensive asset class mix, but without impacting upon overall targeted performance – with our targeted long term investment objective remaining at 3-4% above inflation.

In line with ACF policy, a tender process for the investment advisory services was undertaken in February/March 2013. Fourteen companies were invited to submit a tender across all finance sectors, including asset consultants, banks, brokers and mid-tier boutique advisers. JBWere was appointed as ACF's investment adviser, effective 1 July 2013. Its investment strategy is in line with the Foundation's new approach and their fees best reflected this strategy. JBWere has a long history of investment management in Australia. Since 1840 they have been delivering world-class investment advice to their clients. They have extensive experience in managing not-for-profit portfolios and have a reputation as a market leader. They are committed to supporting ACF accomplish our philanthropic goals through the effective investment of the funds under management.

All funds are placed under management with JBWere according to a mandate and service agreement for three years to 30 June 2016.

In addition to appointing new investment advisers, the investment administration and the unit pricing is being transitioned internally to be operational by 2014. This includes the managing and processing of all donation and grant transactions internally.

All investments are held in the name of the Trustee. The asset mix may include equity, fixed interest, listed hybrid securities, listed and unlisted trusts, unlisted private equity, derivatives and cash.

The asset allocation tables below are designed to provide a benchmark for strategic asset allocation and limits to the allowable tactical investment ranges for each portfolio. The mix will vary over time in order to benefit from opportunities and protect against downside risks.

Australian Communities Foundation adopts two core investment approaches:

Long term growth

The long term growth investment option is the core Foundation investment approach for building endowment and generating annual income for distribution.

The strategic asset allocation is 60% growth assets and 40% cash or fixed interest securities.

The investment objective of the long-term growth portfolio is to achieve a total rate of return of CPI plus 3.9% over a rolling seven year period, a targeted return net of investment fees and charges of approximately 6.9%pa with a probability of loss estimated to be one year in every four years.

Gumnut Accounts

Annie's Wish
Australian Indigenous Persons Initiatives Fund
Baker Watson Fund
Berry Fund
Brockman-Munn Fund
Clarence Community Fund
Clay Gardner Charitable Fund
Dahkota Fund
David Baxter Charitable Fund
Eve & Bill Chandler Fund
Farrall and Nolan Family Account
Four Eleven Seven

Freetown Fund
Gerard Patrick Lonergan Scholarship Fund
Grayson Verley
Green Cities
Gumnut One
Helen Richardson Fund
Jamie Thornton Fund
Krils Fund
Kylee Farrell Lung Fund
League of Social Praxis
M L Jones
m.a.d.woman

**Long Term Growth Portfolio – 60% Allocated to Growth Assets
(Minimum Exposure 40%)**

Asset Class	Tactical Investment Ranges	Strategic Asset Allocation
Cash	0% - 30%	5%
Fixed Interest	5% - 40%	35%
Australian Equities	30% - 70%	50%
International Shares	10% - 30%	10%
Total		100%

Medium term income

The medium term income investment approach is designed primarily for two situations:

- where the intention of the sub-fund is to grant capital as well as income and where the sub-fund may be granted out within a shorter period of time, say three to five years; and
- flow-through giving programs, primarily workplace giving, where employee contributions are distributed, and corporate contributions are used to build the endowment (the corporate contributions use the long-term growth investment approach).

The strategic asset allocation is predominately cash and fixed income securities and targeted to have 15% in growth assets (Australian equities and/or property).

The investment objective of the medium term income portfolio is to achieve a total rate of return in excess of the UBS Bank Bill Index (after investment fees) over a rolling three year period.

**Medium Term Income Portfolio – 85% Allocated to Income Assets
(Maximum Exposure to Growth Assets 20%)**

Asset Class	Tactical Investment Ranges	Strategic Asset Allocation
Cash	5% - 30%	10%
Bank Bills	0% - 35%	25%
Term Deposits	0% - 50%	40%
Corporate Bonds	0% - 15%	5%
Hybrids	0% - 20%	5%
Australian Equities	0% - 20%	10%
Property	0% - 15%	5%
Total		100%

Environmental, Social and Governance (ESG) Investment Guidelines

In 2013-14 the Finance and Investment Committee in conjunction with our new adviser JBWere will be looking at introducing an ethical investment fund.

Under the mandate, Australian Communities Foundation's investment adviser will be responsible for adhering to the Foundation's ESG guidelines. Australian Communities Foundation believes that good corporate governance is very important and seeks to promote sound environmental, social and governance practices. For those investments which are directly held by Australian Communities Foundation (ie, not in a unit trust or other pooled investment entity) the Foundation has a two pronged approach to promote good governance and ESG principles:

- specific exclusions for Australian equities where the company's dominant purpose or product relates to tobacco, gambling or weapons; and
- Australian Communities Foundation is an active investor and votes its stock. In determining how to vote the Foundation takes advice from corporate governance agencies to ensure it exercises its vote in an informed and responsible manner.

Mary & David Fund
MOGGS
Moodie Family Fund
Mundy-Westall 'Moment-in-Time' Fund
Mutual Trust Team Charitable Fund
NICHE
O'Nibbs Gumnut
Parsons and Nathan Gumnut
Renner Family Fund
Reve Fund
S R Marzano Community Fund
Sisters' Wish Fund

Stan Willis Fund
Stanley Family Fund
T.H.F. Fund
Tango
Thompson-Lobb Family Fund
Tony Adams Fund
Trej Li-Goh
Two Cents Fund
Wealth Mentoring Group Fund

Investment Performance

The 2012-13 financial year was an outstanding one for the typical balanced type funds such as the Main fund, and especially those oriented to listed shares and property. Resurgent markets saw the long term growth fund (61% - 80% invested in growth assets) return 21%, the best performance since 2006-07. The medium term income portfolio also had a much improved return of 8.18%.

The 2012-13 result was achieved despite a patchy global economic backdrop, and was driven by excellent returns from listed shares and listed property securities, both here and overseas. While those were the standouts, all asset sectors delivered positive returns for the year.

Investment Returns - Long Term Growth			
	Capital Return %	Income Return %	Total Return %
2012-13	14.95	6.16	21.11
2011-12	-6.21	5.09	-1.12
2010-11	4.56	4.61	9.17
2009-10	1.48	3.80	5.28
2008-09	-18.55	5.34	-13.21

In the past 10 years the annual investment return for the long term growth investment portfolio has averaged 8.6%. This is slightly higher than the investment objectives of the Foundation.

Investment Returns - Medium Term Income			
	Capital Return %	Income Return %	Total Return %
2012-13	3.82	4.38	8.20
2011-12	0.02	4.29	4.31
2010-11	2.45	4.04	6.49

Investment Portfolio

The following information gives a snapshot of the investment portfolio as at 30 June 2013.

The consolidated asset allocation across all of the trust funds managed by the Trustee was:

Australian Equities		28%
International Equities		21%
Property		13%
Fixed Income		14%
Cash and Equivalents		24%
Total		100%

Audit and Risk Committee, and Finance and Investment Committee

Australian Communities Foundation has a Finance and Investment Committee and a separate Audit and Risk Committee, both of which are responsible for assisting the Board with risk management and compliance issues, as well as with due care and diligence in relation to all financial aspects of the Foundation. You can read more about the Audit and Risk Committee on page 21.

Audit and Accounts

Australian Communities Foundation complies with all applicable Australian Accounting Standards and guidelines, as well as relevant Corporations Law provisions. The financial statements are audited by KPMG who have issued audit reports free of qualification for 2012 and 2013. These detailed statements and reports are available on the website.

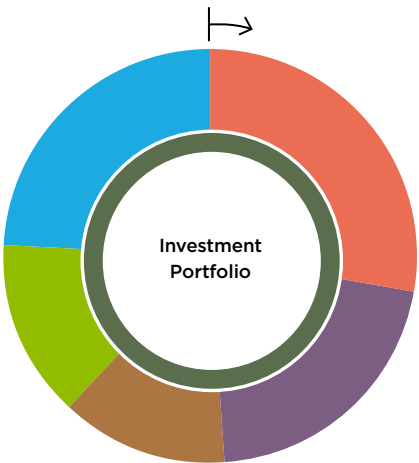
Donor Reporting – Sub-funds Online

Sub-funds Online, ACF’s unit registry, allows donors a secure individual login to view details of sub-fund investments and transaction activity and unit prices.

Australian Communities Foundation provides a donor statement annually at the end of each financial year. These statements detail the investment and transaction activity attributed to each sub-fund, the administration fees and the investment allocations.

Distributions

During the financial year 2012-13 the Foundation met its distribution obligations for each fund. A total of \$6,896,692 was distributed to charitable organisations and projects. The total amount distributed since establishment in 1997 is \$28,451,903.



Abridged Financials as at 30 June 2013

AUSTRALIAN COMMUNITIES FOUNDATION ABRIDGED FINANCIAL STATEMENTS

STATEMENT OF FINANCIAL POSITION AS AT 30 JUNE	2013	2012
	\$	\$
ACCUMULATED FUNDS		
Corpus	200	200
Community Funds	40,809,589	48,239,105
Administration Funds	123,225	180,533
TOTAL ACCUMULATED FUNDS	40,933,014	48,419,838
Represented by:		
CURRENT ASSETS		
Cash and cash equivalents	10,917,419	4,903,601
Trade and other receivables	916,698	560,571
TOTAL CURRENT ASSETS	11,834,117	5,464,172
NON CURRENT ASSETS		
Investments (Note 1)	29,199,167	43,102,070
Plant and equipment	34,661	36,750
TOTAL NON CURRENT ASSETS	29,233,828	43,138,820
TOTAL ASSETS	41,067,945	48,602,992
CURRENT LIABILITIES		
Trade and other payables	109,386	167,450
TOTAL CURRENT LIABILITIES	109,386	167,450
NON CURRENT LIABILITIES		
Trade and other payables	25,545	15,704
TOTAL NON CURRENT LIABILITIES	25,545	15,704
TOTAL LIABILITIES	134,931	183,154
NET ASSETS	40,933,014	48,419,838

Note 1

Investments at the 30th June 2013 of \$29,199,167 (2012: \$43,102,070) are valued after taking into account the change in value of \$12,908,202 in the US unlisted shares referred to in the note at the foot of page 26.

AUSTRALIAN COMMUNITIES FOUNDATION
ABRIDGED FINANCIAL STATEMENTS

INCOME STATEMENT FOR THE YEAR ENDED 30 JUNE	2013	2012
	\$	\$
COMMUNITY FUNDS		
REVENUE		
Donations	6,067,979	19,673,410
Investment income	2,124,418	1,562,770
Net realised (loss) on sale of investments	536,677	(1,079,394)
Net changes in fair value of investments	4,116,799	(712,980)
	12,845,873	19,443,806
EXPENSES		
Administration, fees and costs	(764,484)	(686,156)
Impairment loss on unlisted shares (Note 1)	(12,908,202)	0
PROFIT/(LOSS) FROM OPERATING ACTIVITIES	(826,813)	18,757,651
Distributions paid	(6,602,702)	(3,729,768)
PROFIT/(LOSS) FOR THE YEAR (Note 1)	(7,429,515)	15,027,883
Community Funds at the beginning of the year	48,239,104	33,211,221
COMMUNITY FUNDS AT BALANCE DATE	40,809,589	48,239,104
ADMINISTRATION FUNDS		
REVENUE		
Donations	0	118,500
Investment Income	0	4,977
Administration fee income	673,470	604,433
Other income	5,928	79,129
	679,398	807,039
EXPENSES		
Salary and office costs	(736,706)	(771,353)
PROFIT/(LOSS) FOR THE YEAR	(57,308)	35,686
Administration Fund at the beginning of the year	180,533	144,847
ADMINISTRATION FUNDS AT BALANCE DATE	123,225	180,533

Note 1

Included in the Community Fund's profit of \$15,027,883 for 2012 was a donation of unlisted shares in a US company with a value of \$13,661,202. At the 30th June 2013 these shares were valued by the Directors in accordance with the Fund's accounting policies at \$753,000. This resulted in an impairment charge of \$12,908,202 which was the major contributor to the Fund's loss of \$7,429,515 for the 2013 year.

The Directors recognise that as this generous donation was in the form of unlisted shares in an emerging technology based US company, the market price for the shares was expected to be volatile and uncertain. Consequently until there is liquidity for these shares, they have been excluded from the pool of investments for the purpose of making grants. Once there is liquidity for the shares, the proceeds will be treated as any other donation including any arrears of fees owing.

AUSTRALIAN COMMUNITIES FOUNDATION EXTENSION FUND
ABRIDGED FINANCIAL STATEMENTS

STATEMENT OF FINANCIAL POSITION AS AT 30 JUNE	2013	2012
	\$	\$
ACCUMULATED FUNDS		
Corpus	200	200
Community Funds	4,794,143	3,893,662
TOTAL ACCUMULATED FUNDS	4,794,343	3,893,862
CURRENT ASSETS		
Cash and cash equivalents	694,565	190,576
Trade and other receivables	91,732	36,369
TOTAL CURRENT ASSETS	786,297	226,945
NON CURRENT ASSETS		
Investments	4,034,238	3,700,133
TOTAL NON CURRENT ASSETS	4,034,238	3,700,133
TOTAL ASSETS	4,820,535	3,927,078
CURRENT LIABILITIES		
Trade and other payables	26,192	33,216
TOTAL LIABILITIES	26,192	33,216
NET ASSETS	4,794,343	3,893,862
INCOME STATEMENT FOR THE YEAR ENDED 30 JUNE	2013	2012
	\$	\$
COMMUNITY FUNDS		
REVENUE		
Investment income	288,437	158,691
Donations	396,728	1,890,625
Consultancy fees	65,518	0
Net gain/(loss) on revaluation of financial assets	633,425	(80,835)
Net realised gain/(loss) on sale of investments	(32,613)	(121,235)
	1,351,495	1,847,246
EXPENSES		
Administration fee	(68,405)	(56,888)
Investment fee	(20,185)	(17,035)
Other expenses	(121,834)	0
	(210,424)	(73,922)
PROFIT/(LOSS) FROM CONTINUING OPERATIONS	1,141,071	1,773,324
Distributions paid	(240,590)	(77,682)
PROFIT/(LOSS) FOR THE YEAR	900,481	1,695,642
Community Funds at the beginning of the year	3,893,662	2,198,020
COMMUNITY FUNDS AT BALANCE DATE	4,794,143	3,893,662

AUSTRALIAN COMMUNITIES FOUNDATION SCHOLARSHIP FUND
ABRIDGED FINANCIAL STATEMENTS

STATEMENT OF FINANCIAL POSITION AS AT 30 JUNE	2013	2012
	\$	\$
ACCUMULATED FUNDS		
Corpus	100	100
Community funds	285,796	250,770
TOTAL ACCUMULATED FUNDS	285,896	250,870
Represented by:		
CURRENT ASSETS		
Cash and cash equivalents	47,927	16,921
Trade and other receivables	3,162	3,997
TOTAL CURRENT ASSETS	51,089	20,918
NON CURRENT ASSETS		
Investments	235,160	238,122
TOTAL NON CURRENT ASSETS	235,160	238,122
TOTAL ASSETS	286,249	259,040
CURRENT LIABILITIES		
Trade and other payables	353	8,170
TOTAL LIABILITIES	353	8,170
NET ASSETS	285,896	250,870
INCOME STATEMENT FOR THE YEAR ENDED 30 JUNE	2013	2012
	\$	\$
COMMUNITY FUNDS		
REVENUE		
Investment income	12,229	13,716
Donations	41,628	33,871
Net gain/(loss) on revaluation of financial assets	37,783	(13,418)
Net realised gain/(loss) on sale of investments	701	(1,875)
	92,341	32,294
EXPENSES		
Administration fee	(2,564)	(2,391)
Investment fee	(1,257)	(1,261)
Other expenses	(94)	(42)
	(3,915)	(3,694)
PROFIT/(LOSS) FROM CONTINUING OPERATIONS	88,426	28,600
Distributions paid	(53,400)	(44,000)
PROFIT/(LOSS) FOR THE YEAR	35,026	(15,400)
Community Funds at the beginning of the year	250,770	266,170
COMMUNITY FUNDS AT BALANCE DATE	285,796	250,770

**Australian
Communities
Foundation**



Australian Communities Foundation
ABN 57 967 620 066
Fitzroy Town Hall, 201 Napier Street, Fitzroy VIC 3065
Tel: 03 9412 0412 Fax: 03 9415 7429
Website: communityfoundation.org.au
Email: admin@communityfoundation.org.au

Cover Image: Members of the Karen organisation of Bendigo. Photographer Martine Street.



“

GIVING
VOICE

GRANTS 2012-13

”

Australian
Communities
Foundation



Australian Communities Foundation Grants 2012-13

Grant Recipient

Funded Activity

Sub-fund

ARTS & CULTURE

3PBSFM	General support	Miller Fund
3RRR Transmission Fund	General support	Miller Fund
A is for Atlas Gift Fund	Performance of Voyage	Hamer Family Fund
Abbotsford Convent Foundation	General support	Dara Fund No. 2, Henkell Family Fund, Ballandry Fund
Australian Centre for Contemporary Art	General support (2 grants)	Sally Browne Fund
Australian Chamber Orchestra	Medici Program - Ilya Isakovich's Chair	Connie & Craig Kimberley Fund
Australian Chamber Orchestra	The Reef project	Annamila Fund
Australian Chamber Orchestra	ACO's education programs	Ballandry Fund
Australian National Academy of Music	Support for an individual musician	Annamila Fund
Australian Youth Orchestra Appeal Trust Fund	General support	Henkell Family Fund
Back to Back Theatre Inc	Performance of Ganesh versus the Third Reich	Annamila Fund
Castlemaine State Festival Ltd	General support	Hart Line Fund
Centre for Contemporary Photography Inc	General support	Annamila Fund
Co Opera Inc	Regional performances of Die Fledermaus	Henkell Family Fund
Council of Trustees of the National Gallery of Victoria	Art Acquisition Fund - Indigenous works	Annamila Fund
Deutsche Schule Melbourne Building Fund	General support	Henkell Family Fund
Documentary Australia Foundation	Stories from the Inside - a documentary film	Annamila Fund
Fortyfive Downstairs Inc	General support	Hart Line Fund
Hobart Playback Theatre Inc	Life in Glenorchy - telling our stories	Glenorchy Community Extension Fund
Ilbijerri Aboriginal and Torres Strait Islander Theatre Co Op	Performance of More than Love	EastWeb Fund
John Button Foundation Public Fund	John Button Prize	Beecher Family Charitable Fund
Kimberley Foundation Australia Public Donation Fund	General support	Annamila Fund
McClelland Sculpture Limited	General support	Eve & Bill Chandler Fund
Melba Opera Fund	General support	Henkell Family Fund, Ballandry Fund
Melba Opera Fund	Pecan Summer - an Aboriginal opera	Annamila Fund
Melbourne Chamber Orchestra Donation Fund	Programs at Melbourne Chamber Orchestra	Hamer Family Fund
Melbourne City Opera Fund	2012 production of Tosca	Henkell Family Fund
Melbourne City Opera Fund	Viva Verdi	Henkell Family Fund
Melbourne International Festival of the Arts Limited	Melbourne Festival Patrons program	Sally Browne Fund
Melbourne Recital Centre Public Fund	Programs at the Melbourne Recital Centre (2 grants)	Annamila Fund
Melbourne Recital Centre Public Fund	Great performers master class featuring Susan Bullock	Henkell Family Fund
Melbourne Symphony Orchestra Fund	General support	Henkell Family Fund
Melbourne Writers Festival	Melbourne Writers Festival 2013	Hart Line Fund, Sally Browne Fund
Monash University	Alison Patrick Memorial Scholarship	Alison Patrick Memorial Fund
Monash University	Fine arts lectures and workshops program	Henkell Family Fund

Grant Recipient	Funded Activity	Sub-fund
Monash University	Sylvia Fisher Bursary	Sylvia Fisher Fund
More Than Opera	General support (3 grants)	Henkell Family Fund
Mount Buller Arts Association Gift Fund	General support	Mt Buller Mt Stirling Art Fund
Musica Viva Development Fund	Equal music program	Hamer Family Fund
National Trust Of Australia (Victoria)	General support	Annamila Fund, Geostudies Fund, Boat Fund
National Trust Of Australia (Victoria)	German Lutheran Trinity Church	Henkell Family Fund
Opera Australia	General support	Henkell Family Fund, Ballandry Fund
Opera Australia	Opera Australia's Ring Cycle	Henkell Family Fund
Opera Foundation Australia Trust Fund	The German Opera Scholarship (2 grants)	Henkell Family Fund
Opera Society Inc	General support	Henkell Family Fund
Playbox Theatre Company Ltd	Malthouse Theatre programs	Dara Fund No. 2, Sally Browne Fund
Royal Melbourne Philharmonic Society	Royal Melbourne Philharmonic Aria Award 2012	Henkell Family Fund
Songlines Music Aboriginal Corporation Public Fund	Songlines youth programmes (2 grants)	Towards a Just Society Fund
St Francis Choir	General support	Antoinette & John Richardson Memorial Fund
St Vincent's Hospital (Melbourne) Limited	Performance of St Matthews Passion	Henkell Family Fund
State Orchestra of Victoria	General support	Henkell Family Fund
Stella Prize Inc Public Fund	The Stella Prize	Koshland Innovation Fund, Omi-Albers Fund
The Art Gallery Board	Directors Project at the Art Gallery of South Australia	Carreker Community Fund
The Lieder Society of Victoria	General support	Henkell Family Fund
The Melbourne Opera Company Limited	Performance of Fidelio (2 grants)	Henkell Family Fund
The Melbourne Opera Company Limited	General support	Henkell Family Fund
The Opera School Melbourne Fund Account	Two scholarships at the Opera Studio	Henkell Family Fund
The Richard Wagner Society Special Productions Fund	General support	Henkell Family Fund
University of Melbourne - Melbourne Theatre Company	Melbourne Theatre Company patrons program	Sally Browne Fund
Victorian Arts Centre Trust	General support	Henkell Family Fund
Victorian Opera Company Ltd	General support	Henkell Family Fund
Victorian Opera Company Ltd	Sylvia Fisher Bursaries	Sylvia Fisher Fund

COMMUNITY DEVELOPMENT/ADVOCACY

Aboriginal Evangelical Fellowship Family and Youth Services	Aboriginal Evangelical Fellowship Chaplancy Fund	Ralph & Betty Sims Fund
Activate Community Sevices	Walk Together Melbourne	EastWeb Fund
Australian Centre for Social Innovation Inc	The Australian Changemakers Festival	Steve Lawrence Social Innovation Non-Tax Deductible Fund
Australian Men's Shed Association	Gilgandra men's shed	Slater & Gordon Community Fund
Bendigo Baptist Community Care Inc	Eleven 41 cleaning enterprise	EastWeb Fund
Brotherhood of St Laurence	Women and babies project	Coronella Fund
CARA Inc	In Safe Hands project	Vicki Standish Family Fund
EACH	Refugee occasional care and supported playgroup	EastWeb Fund



Grant Recipient	Funded Activity	Sub-fund
Edmund Rice Camps for Kids WA	Youth development and leadership program	Impact 100 WA
Fitted For Work	Linking young women with work	Hart Line Fund
Fitted For Work	General support	Fitted For Work
Fitzroy Adventure Playground	Resilience through play for refugee children	B B & A Miller Fund
Fitzroy Legal Service	Animal Law Clinic	Assia Altman Fund
Flemington and Kensington Community Legal Centre	Without Suspicion: Towards more inclusive and human rights focused policing in Victoria	Assia Altman Fund
Gippsland and East Gippsland Aboriginal Cooperative	Lucknow Indigenous cricket program	EastWeb Fund
Gunditjmara Aboriginal Co-Op Ltd	Budgies netballers	Towards a Just Society Fund
Heaps Decent	Big Up program	Unico Community Fund
Home Ground Services	Home Grounds annual art exhibition	Unico Community Fund
Human Rights Law Centre	General support	Story Street Fund
Igniting Change Foundation	Support for the New Stars Basketball Association	Annamila Fund
International Women's Development Agency	General support (2 grants)	Fairer Futures Fund
Jesuit Social Services	Support after suicide resources	Heather Watkins Memorial Fund
Jewish Museum of Australia	Education and extension programs	Howard Nathan Fund
Jobs Australia Limited	Poverty and inequality in Australia	Social Justice Fund
Kids Under Cover	Studio Build program	Pharmore Charitable Fund
LaTrobe University	Programs for refugee and newly arrived young people	Assia Altman Fund
Lighthouse Foundation	Lighthouse Foundation's Kensington House	Clemenger Staff Fund
Mambourin Enterprises	Market stall at the Altona street market	Hobsons Bay Community Fund (Extension)
Monash University	Cultural community liason program	Elizabeth Eggelston Fund
Multicultural Arts Victoria Inc	Black harmony gathering	EastWeb Fund
New Stars Basketball Association	Basketball programs for young offenders	The Funding Network - Melbourne
Ngwala Willumbong Co-operative Ltd	Australian Indigenous netball team	Towards a Just Society Fund
Public Interest Law Clearing House (PILCH)	Charity Law Reform Project - advocacy publication	Fairer Futures Fund
Refugee and Immigration Legal Centre	General support	Story Street Fund
Rotary Australia Overseas Aid Fund	Liaison Officer - Goodwill Ambassador of Education in East Timor	Webb Family Fund
Social Ventures Australia	The Funding Network - feasibility study	Steve Lawrence Social Innovation Fund, MacroMelbourne Community Fund
Social Ventures Australia	Social Change 101	Steve Lawrence Social Innovation Non-Tax Deductible Fund, Steve Lawrence Social Innovation Fund
Social Ventures Australia	The Funding Network	Steve Lawrence Social Innovation Fund
South East Asia Investigations into Social and Humanitarian Activities Ltd Gift Fund	SISHA programs in Cambodia	The Funding Network - Perth
St Kilda Gatehouse Inc	Navigating a New Path program	Vicki Standish Family Fund
Tabitha Foundation Australia	Tabitha Foundation microfinance programs in Cambodia	Dumbarton Fund
The Australia Institute	Women and equity research project	Social Justice Fund
The Australia Institute	General support	Fairer Futures Fund (2 grants) Dara Fund No. 2
The Biography Program	Recording life stories in aged care facilities	The Funding Network - Melbourne
The Hunger Project	Programs at the Hunger Project	Thuraisingham Education and Empowerment Fund

Grant Recipient	Funded Activity	Sub-fund
The Hunger Project	The Hunger Project - Senegal	Social Justice Fund
The Pinnacle Foundation Scholarship Fund	General support	Assia Altman Fund
The Trustee for World Relief Overseas Aid Fund	Playground ideas	Mutual Trust Team Charitable Fund
Victorian Immigrant and Refugee Womens Coalition Incorporated	Positive Voices	EastWeb Fund
Weenthunga Health Network Inc	Weenthunga Health Day	Anna Wearne Fund, Fairer Futures Fund
Weenthunga Health Network Inc	Women in Health: stage 2	Alf & Meg Steel Fund
Weenthunga Health Network Inc	General support	Towards a Just Society Fund
Weenthunga Health Network Inc	Connecting Cs Through to Health program	The Funding Network - Melbourne
Wellwishers Ethiopia Gift Fund	Ethopian water wells program	Nash Family Fund
Western Radio Broadcasters Inc	Volunteer training program	Hobsons Bay Community Fund (Extension)
White Lion Incorporated	Young Womens support services	Vicki Standish Family Fund
White Lion Incorporated	Bundji Bundji program	Vicki Standish Family Fund, Dina Grollo Community Fund (2 grants)
White Lion Incorporated	General support	Dina Grollo Community Fund
Whittlesea Community Connections Inc	Women in Work community enterprise	Sunshine and Crocodile Fund
Windermere Child and Family Services	Building harmony on new housing estates	Sunshine and Crocodile Fund
World Education Australia	Good Return	Pomegranate Fund
World Education Australia	Microfinance project for the rural poor in Laos	Clare Murphy Fund, Social Justice Fund
Youth Off The Streets Limited	Community garden at Merrylands, NSW	Slater & Gordon Community Fund

COMMUNITY SERVICES/WELFARE

Appin Hall Children's Foundation	General support	Anna Wearne Fund
Brisbane Youth Service Inc	General support (2 grants)	Holding Redlich Social Justice Fund
Brotherhood of St Laurence	Atherton Gardens breakfast club	Dina Grollo Community Fund
Brotherhood of St Laurence	Programs at Sumner House and Sambell Lodge	Agnes Robertson Fund
Bucaan Community Inc	Bucaan Community House youth group	Glenorchy Community Extension Fund
Butterfly Foundation	General support	Beecher Family Charitable Fund
Centre for Multicultural Youth	Support for Afghani family	Mayer Morris Family Fund, Herbert and Inge Littauer Fund
Cottage By the Sea	Take a Break camp	McGregor Family Fund
Dixon Park Surf Lifesaving Club	Support for lifesaving equipment	Slater & Gordon Community Fund
Family And Kids-Care Foundation Inc	Support for family social activities	Slater & Gordon Community Fund
Fareshare Australia	General support (3 grants)	Unico Community Fund
Food Within Ltd	Wings to Carry U program	The Funding Network - Sydney
Gold Coast Drug Council	General support	Dina Grollo Community Fund
Hepburn Health Service	Christmas hampers 2012	Betty Fulton Fund
Home Ground Services	Common Ground Elizabeth St	Dumbarton Fund
Kids Under Cover	Cubby House Challenge	Dina Grollo Community Fund
Kids Under Cover	General support	Dina Grollo Community Fund
Lifestyle Solutions	The Ally Project	The Funding Network - Sydney
Lighthouse Foundation	General support	Beecher Family Charitable Fund
Manna Inc	Winter school uniform program	Impact 100 WA



Grant Recipient	Funded Activity	Sub-fund
Martin Luther Homes Boronia Inc	General support	Henkell Family Fund
Melbourne City Mission Inc	Melbourne City Mission's signal program	Hamer Family Fund
Micah Projects Inc	General support (3 grants)	Dina Grollo Community Fund
Odyssey House Victoria	General support	Hopetoun Fund, Ralph & Betty Sims Fund
Prahran Mission	General support	Hopetoun Fund
Salvation Army Australia Eastern Territory Social Work	Salvation Army Westcare - Melton Foster Care	Henkell Family Fund
Salvation Army Red Shield Appeal	General support	Hopetoun Fund
Scripture Union Queensland	General support	Keith & Jeannette Ince Fund
Scripture Union Victoria	Scripture Union Victoria welfare fund	Ralph & Betty Sims Fund
St Vincent de Paul Society Vic Inc	Hobsons Bay No Interest Loan Scheme	Hobsons Bay Community Fund (Extension)
The Mercy Foundation Ltd	General support	Dina Grollo Community Fund
The Smith Family	General support	Geostudies Fund
Unitingcare Tasmania	Grandparents raising grandchildren	Glenorchy Community Fund
Very Special Kids	General support	Henkell Family Fund, Hopetoun Fund
Victorian Foundation for Survivors of Torture Inc	Assistance for an individual student	Anna Wearne Fund
Youth Off The Streets Limited	Don Bosco House (2 grants)	Holding Redlich Social Justice Fund

DISABILITY

Batyr Australia Ltd	Being Herd program	The Funding Network - Sydney
Belonging Matters	Twenty Years: Twenty Stories documentary	Paterson Family Fund
Cerebral Palsy Alliance	General support	Geostudies Fund
Cerebral Palsy Alliance	Purchase of electrical stimulation machines for strengthening muscles	Slater & Gordon Community Fund
Croxton Special School	Support for a new playground	N E Renton Bequest
Disability Media Donations Fund	Twenty Years: Twenty Stories documentary	Paterson Family Fund
Disability Media Donations Fund	Weird and Wonderful - a documentary film	DISCAL Fund
Disability Resources Centre Inc	Education grants	Towards a Just Society Fund
e.motion21	Celebrating World Downs Syndrome Day	RO Fund, Paterson Family Fund
Independence Australia (Paraquad Victoria)	General support	Ralph & Betty Sims Fund
Kevin Heinze Garden Centre	Programs at the Kevin Heinze Garden Centre	McGregor Family Fund
Melbourne Writers Festival	AUSLAN at Melbourne Writers Festival	B B & A Miller Fund
Sporting Wheelies & Disabled Sport & Recreation Assn Of Qld Inc	Twenty Years: Twenty Stories documentary	Paterson Family Fund
Syndromes without a Name (S.W.A.N) Australia	General support	N E Renton Bequest
Tutti Ensemble Incorporated	Twenty Years: Twenty Stories documentary	Paterson Family Fund
Vision Australia	Training and development of a seeing eye dog	Dennoch Fund

Grant Recipient

Funded Activity

Sub-fund

EDUCATION/TRAINING/EMPLOYMENT

Ardoch Youth Foundation Inc	Southern Teaching Unit (2 grants)	Holding Redlich Social Justice Fund
Ardoch Youth Foundation Inc	General support	McGregor Family Fund
Ardoch Youth Foundation Inc	Literacy buddies program (2 grants)	Slater & Gordon Community Fund
Ardoch Youth Foundation Inc	Mr Worrythoughts - a mental health intervention project for primary school students	Slater & Gordon Community Fund
Australian National University	Indigenous education strategic dialogue	Towards a Just Society Fund
Australian Youth Climate Coalition Gift Fund	General support	Fairer Futures Fund
Bendigo Community Health Services	School is Cool program	EastWeb Fund
Bendigo Regional Institute of TAFE	Tarrengower Chapters book club	Alf & Meg Steel Fund
Bendigo Senior Secondary College	Dare to Dream scholarship program	John Cummins Memorial Fund (Extension)
Big Picture Education Australia Inc	Play it Back Project	The Funding Network - Melbourne
Boort District School	Dare to Dream scholarship program	John Cummins Memorial Fund (Extension)
Brotherhood of St Laurence	Support for students	Anna Wearne Fund
Brotherhood of St Laurence	Employment and training programs for asylum seekers (2 grants)	Dina Grollo Community Fund
Catherine Bateman	2012 Sally Isaac Memorial Scholarship Fund Award	Sally Isaac Memorial Scholarship Fund
Centre for Sustainability Leadership	Scholarship program	Dennoch Fund
Charles Darwin University	Sunning Hill Bursary	Sunning Hill Fund
Charles Darwin University	Dr Tanya Davies Equity Grant	Trikojus Education Fund
Coburg Senior High School	Dare to Dream scholarship program	John Cummins Memorial Fund (Extension)
Cool Australia	General support	Connie & Craig Kimberley Fund
Dungala Kaiela Foundation	Dungala Kaiela writing awards	Fairer Futures Fund
Emma McLean Kindergarten and Day Care Inc	You Can Do It program	Hobsons Bay Community Fund (Extension)
Foundation For Rural and Regional Renewal	Education programs at Daylesford primary and secondary schools	Betty Fulton Fund
Ganbina (Koori Economic Employment Training Agency Inc)	Thu Giang Nguyen Indigenous Encouragement Scholarship	Thu Giang Nguyen Fund
Glossop High School	Joy Mavis Seidler scholarships	Joy Mavis Schwartz Seidler Musical Scholarship
Graduate Women Victoria	2013 scholarships	Graduate Women Victoria, Graduate Women Victoria Donors Fund
Healesville Indigenous Community Services Association	Outer eastern region student bursary scheme	Aboriginal Student Bursaries Fund
Hobsons Bay Toy Library	Hobsons Bay Toy Library	Hobsons Bay Community Fund (Extension)
Kids Under Cover	General support	Dina Grollo Community Fund
Kids Under Cover	Scholarship program (2 grants)	Dina Grollo Community Fund
King David School Scholarship Fund	Maths/Science girls scholarships	DDJE Fund
King David School Scholarship Fund	General support	Howard Nathan Fund
Korumburra Secondary College	Dare to Dream scholarship program	John Cummins Memorial Fund (Extension)
Library Board of Victoria	Education programs at the State Library of Victoria	Hart Line Fund
Mission Australia	Mission Australia Centre, NSW	Dina Grollo Community Fund



Grant Recipient	Funded Activity	Sub-fund
New Hope Foundation Inc	Homework program	Hobsons Bay Community Fund (Extension)
Newcomb Secondary College	Dare to Dream scholarship program	John Cummins Memorial Fund (Extension)
North Geelong Secondary College	Dare to Dream scholarship program	John Cummins Memorial Fund (Extension)
Northern College of Arts and Technology	Dare to Dream scholarship program	John Cummins Memorial Fund (Extension)
Northern Melbourne Institute of TAFE	NMIT study grant program	Towards a Just Society Fund
Reach Foundation	General support	Dina Grollo Community Fund
Regional Arts Victoria	Creative Leadership program	Dennoch Fund
Regional Arts Victoria	Education and Families program	McGregor Family Fund
RMIT	Herbert and Inge Littauer nursing scholarship	Herbert and Inge Littauer Fund
Rotary Australia Overseas Aid Fund	Tibetan Village Project Australia	Allaway Lancashire Fund
Rotary Australia Overseas Aid Fund	East Timor 2012 school project (3 grants)	Spend It Well Fund, Webb Family Fund
Rotary Australia Overseas Aid Fund	Ossolugo Secondary School, Timor Leste	Spend It Well Fund, Webb Family Fund
Rotary Australia Overseas Aid Fund	ASER Program	Story Street Fund
Ruah Community Services	The Life Skills program	The Funding Network - Perth
Salvation Army Australia Eastern Territory Social Work	Pathways training program (2 grants)	Dina Grollo Community Fund
Sarah Argles	Tony Adams Fund professional development grant	Tony Adams Extension Fund
Scholarships for Australians to Study Overseas	Study Overseas Foundation	Tony Adams Extension Fund
Secretariat of National Aboriginal and Islander Child Care Inc	SNAICC trainee and scholarship program	Beecher Family Charitable Fund
Southern Family Life Service Association	YouthWorx program	Clemenger Staff Fund
State Schools Relief	Thu Giang Nguyen science prize	Thu Giang Nguyen Fund
Swinburne University	Richardson Award	Antoinette and John Richardson Memorial Fund
Swinburne University	Treviso program	Antoinette and John Richardson Memorial Fund
Swinburne University	Charles D'Aprano Memorial Scholarship	Charles D'Aprano Award Fund
The Smith Family	Girls at the Centre program	DDJE Fund
The Smith Family	Tech Packs project	Dennoch Fund
The Smith Family	Learning for Life - Sunshine Coast program	Keith & Jeannette Ince Fund
The Social Studio	Sewing cooperative in Dandenong	Anna Wearne Fund
The Social Studio	Support for an individual student	B B & A Miller Fund, DDJE Fund
The Social Studio	Literacy initiatives	Equal Access Fund
The Trustee for Andrew Dean Fildes Foundation	Shine - childhood language and learning program	Mutual Trust Team Charitable Fund
The Trustee for Toorak College Scholarship Fund	General support	Alice Sloan Fund
Thornbury High School	Dare to Dream scholarship program	John Cummins Memorial Fund (Extension)
University of Canberra	The Aspiration Initiative	Social Justice Fund
University of Melbourne	The Jack Keating Fund (2 grants)	Koshland Innovation Fund
University of Melbourne	Indigenous bursary scheme	Towards a Just Society Fund
University of Western Sydney	Education research projects at the Whitlam Institute	Hart Line Fund, Koshland Innovation Fund
Volunteering of SA and NT inc	Children of a Rainbow Serpent - an Aboriginal volunteering program	Johnstone Gumption Fund, Sally Oatley Memorial Fund

Grant Recipient	Funded Activity	Sub-fund
Wanslea Family Services	The Imagination Games	The Funding Network - Perth
Warracknabeal Secondary College	Dare to Dream scholarship program	John Cummins Memorial Fund (Extension)
Weenthunga Health Network Inc	Support for an individual student	Anna Wearne Fund
Weenthunga Health Network Inc	Koori OT Scholarship	Anna Wearne Fund
Western Chances	Scholarship program	DDJE Fund, McGregor Family Fund
Western Region Health Centre Ltd	Scholarship for Relationships Australia program	Mayer Morris Family Fund
Windermere Primary School Association	The Windermere shed	Glenorchy Community Extension Fund
Worawa Aboriginal College Inc	Worowa College arts centre	Fairer Futures Fund (2 grants)
Yalari Ltd	Indigenous scholarships	RO Fund
Youth Off The Streets Limited	Step Up program at Chapel School (2 grants)	Dina Grollo Community Fund
Yuan Gao	Tony Adams Fund research in international education grant	Tony Adams Extension Fund

ENVIRONMENT

Australian Environment Grantmakers Network	Strategic supporter grant	Fairer Futures Fund
Australian Marine Conservation Society	General support	Keith & Jeannette Ince Fund
Australian Orangutan Project Conservation Fund	Orangutan rescue unit and Tripa Swamp Appeal	Vilde Family Fund
Australian Wildlife Conservancy	General support	Keith & Jeannette Ince Fund
Australian Wildlife Conservancy	Kimberley programs	Keith & Jeannette Ince Fund
Australian Youth Climate Coalition Gift Fund	General support	Melliodora Fund, Fairer Futures Fund
Baptist Community Services - NSW & ACT	Maranoa Little Scrub	Alf & Meg Steel Fund
Bush Heritage Australia	General support	Geostudies Fund
Centre for Policy Development Ltd	The Sustainable Economy intern training program	Digger & Shirley Martin Environment Fund, Hamer Family Fund
Centre for Policy Development Ltd	Sustainable Policy Research Program (2 grants)	Fairer Futures Fund
Centre for Policy Development Ltd	Support for the Centre for Policy Development programs	Curlew Fund
Centre for Policy Development Ltd	Sustainable Economy program	Melliodora Fund, Koshland Innovation Fund
Climate Institute (Australia) Ltd	The Climate of the Nation report	Digger & Shirley Martin Environment Fund
Climate Institute (Australia) Ltd	General support	Dara Fund No. 2 (2 grants), Annamila Fund
East Gippsland Forest Fund	General support	Vilde Family Fund
Environment Victoria Inc	General support (2 grants)	Koshland Innovation Fund
Environment Victoria Inc	Reclaim Victoria's Environment campaign	Melliodora Fund, Hamer Family Fund
Foundation For Rural and Regional Renewal	Small grants for small rural communities program	Alf & Meg Steel Fund
Friends of the Earth	Support for the environmental organisation, Market Forces	Fairer Futures Fund, Melliodora Fund, Running Waters Fund
Friends of the Earth	Murray Darling Basin campaign	Alf & Meg Steel Fund
Friends of the Earth	Barmah Millewa campaign	Fairer Futures Fund
Friends of the Earth	Cultural Flows film tour	Quercus Fund
Greenpeace Australia Pacific Ltd	General support	Dara Fund No. 2
Invasive Species Council	General support	Curlew Fund



Grant Recipient	Funded Activity	Sub-fund
Landcare Australia Ltd	Darebin Parklands environmental and education centre	Hamer Family Fund
Mackay Conservation Group	Campaign to protect the Great Barrier Reef	Melliodora Fund, Running Waters Fund
Mount Alexander Sustainability Group Inc	A Million Solar Citizens campaign	Fairer Futures Fund
Mount Alexander Sustainability Group Inc	100% renewable campaign	Melliodora Fund
Nature Conservation Council of NSW Environment Gift Fund	Caroona Coal Action Group	Vilde Family Fund, Curlew Fund
Norman Wettenhall Foundation	Biorich plantations documentary	Melliodora Fund
Norman Wettenhall Foundation	Small environmental grants scheme	Unico Community Fund
Norman Wettenhall Foundation	Dja Dja Wurrung Landcare Group	Melliodora Fund
Panboola Fund	Panboola wetland volunteers program	B B & A Miller Fund
Royal Botanic Gardens Melbourne	Royal Botanic Gardens Directors Circle	Sally Browne Fund
The International Home of Rest for Champion Horses Inc	General support	Keith & Jeannette Ince Fund
The Lost Dogs Home	General support (2 grants)	Henkell Family Fund
The Wilderness Society Inc	Marine campaigns	Curlew Fund
Victorian National Parks Association	Central Victorian Biolinks project	Alf & Meg Steel Fund, Melliodora Fund
Victorian National Parks Association	General support	Melliodora Fund

HEALTH/MEDICAL RESEARCH

Alzheimers Disease & Related Disorders Association of Victoria	General support	Hopetoun Fund
Arthritis Victoria	General support	Hopetoun Fund
Asbestos Diseases Society of Australia Inc	Vojakovic Fellowship (10 grants)	Slater & Gordon Asbestos Research Fund
Asbestos Diseases Society of Australia Inc	Research into chemosensitivity of malignant pleural mesothelioma	Slater & Gordon Asbestos Research Fund
Asbestos Diseases Society of Australia Inc	Clinical trial - physical activity in lung cancer patients	Slater & Gordon Asbestos Research Fund
Asbestos Diseases Society of Australia Inc	Breath testing in thoracic malignancy	Slater & Gordon Asbestos Research Fund
Austin Health	Brain tumor support service	John Cummins Memorial Fund (Extension)
Cabrini Health	Cabrini Hospital Foundation	Hopetoun Fund
Canteen-The Australian Organisation for Young People Living with Cancer	General support	Henkell Family Fund
Children's Health Foundation Queensland	General support (3 grants)	Dina Grollo Community Fund
Cure Cancer Australia Foundation	General support	Clemenger Staff Fund
Family Planning Tasmania	Youth information card	Glenorchy Community Fund
Florey Institute of Neuroscience and Mental Health	General support	Ralph & Betty Sims Fund
Footscape Inc	Volunteer podiatrist orientation manual	EastWeb Fund
Interplast Australia and New Zealand	General support	Dina Grollo Community Fund
John Fawcett Foundation	General support	Clare Murphy Fund
John Fawcett Foundation	Sight-restoring cataract operations in Indonesia	Social Justice Fund
John Fawcett Foundation	Sight-restoring cataract operations in Northern Bali	Social Justice Fund

Grant Recipient	Funded Activity	Sub-fund
Macfarlane Burnet Institute for Medical Research and Public Health	General support	Hopetoun Fund
Mansfield District Hospital	Clown doctor training	Alf & Meg Steel Fund
Marie Stopes International Australia Overseas Development Fund	Clinical training and resource library in Timor Leste	Clare Murphy Fund
Martin Luther Homes Boronia Inc	General support	Henkell Family Fund
Mary Potter Foundation	Complementary therapy program	Carreker Community Fund
MECWA Community Care	General support	Hopetoun Fund
Medecins Sans Frontieres Australia	General support	Story Street Fund
Moyola Cottages and Lodge	General support	Rod and Pamela Wells Community Fund
Multiple Sclerosis Australia	General support	Slater & Gordon Community Fund
Murdoch Childrens Research Institute	Research into genetic conditions	N E Renton Bequest
National Stroke Foundation	General support	Hopetoun Fund
Orygen Youth Health Research Centre	General support	Dina Grollo Community Fund
Ovarian Cancer Research Foundation	Early detection test research	Clemenger Staff Fund
Perth Mobile GP Services Ltd	Health care for homeless and marginalised in Perth	The Funding Network - Perth
Peter MacCallum Cancer Institute	General support	Hopetoun Fund
Red Dust Role Models Limited	General support	Equal Access Fund
Royal Childrens Hospital	General support	Henkell Family Fund
Royal Flying Doctor Service of Australia	General support	Hopetoun Fund
Tabulam and Templer Homes for the Aged Inc	General support	Henkell Family Fund
Tabulam and Templer Homes for the Aged Inc	Australian German Welfare Society	Henkell Family Fund
The Malpa Project	Kurdu Kurdu Doctors Program	The Funding Network - Sydney
Very Special Kids	General support	N E Renton Family Fund
Vision Australia	General support	Hopetoun Fund
Women's Health Victoria	Health awareness for young women	Women's Health Victoria Fund



Cover image: Songlines Aboriginal Music - Koorie Pride Youth Festival 2013

Australian Communities Foundation
ABN 57 967 620 066
Fitzroy Town Hall, 201 Napier Street, Fitzroy VIC 3065
Tel: 03 9412 0412 Fax: 03 9415 7429
Website: communityfoundation.org.au
Email: admin@communityfoundation.org.au

Australian
Communities
Foundation

